



## DETACHED FAMILY HOME WITHIN THE EASTBURY FARM ESTATE

---

Bishops Avenue, Northwood, Middlesex, HA6 3DD

**ROBSONS**



## FIVE BEDROOM FAMILY HOME

**RECENTLY RENOVATED • FIVE BEDROOMS •  
THREE BATHROOMS • LOUNGE • STUDY •  
OPEN-PLAN KITCHEN/ LIVING SPACE • 100FT  
REAR GARDEN • CARRIAGE DRIVEWAY •  
UNDERFLOOR HEATING ON BOTH FLOORS •**

A recently renovated, five bedroom, three bathroom detached residence, ideally positioned within the much sought after Eastbury Farm Estate. This stunning family home has been thoughtfully designed to create a spacious, light-filled interior, finished in a high-quality contemporary style.

The ground floor comprises a large entrance hall with a stylish, cantilevered staircase and tiled flooring, with doors leading through to a front reception, study, guest cloakroom and a bedroom with an ensuite steam shower room. Spanning across the rear is a beautiful open-plan kitchen/ dining/family room with bi-fold doors providing views and access to a raised terrace and garden beyond. The sleek kitchen features a white marble island with wood effect inlay and induction hob, fitted with a range of charcoal cabinets with integrated high-end appliances and contrasting worktops. Sliding pocket doors reveal a concealed bar/ drinks cabinet with a wine cooler, and an adjacent door leads through to a separate utility room.







The first floor landing is flooded in natural daylight courtesy of an arched window. The spacious principal bedroom benefits from a separate dressing room with built-in wardrobes, and a luxurious ensuite bathroom with freestanding bath tub, shower enclosure, wall-hung wc and 'his & hers' basins. There are two further double bedrooms on this floor, one of which has a dressing room and access to a 'Jack & Jill' style shower room. The loft has already been partly converted and provides potential to be utilised for further bedrooms with the raised roof.

The rear garden extends to approximately 100 feet in length with automated sprinklers, a raised terraced seating area, wrought iron railings and steps down to the lawn.

At the front, a paved carriage driveway provides ample off street parking.

### **Location**

Bishops Avenue, part of the popular Eastbury Farm Estate, is conveniently located for both Moor Park and Northwood with its Metropolitan Line train station, shops and restaurants. Rickmansworth and Watford's town centres are also accessible offering a further wide range of shops and restaurants. The local area is well served for state and private schools, which includes Eastbury Farm, Merchant Taylors and St Helens. Major motorways and airports are also within reach.

Tenure: Freehold

Local Authority: Three Rivers District Council

Council Tax: Band G

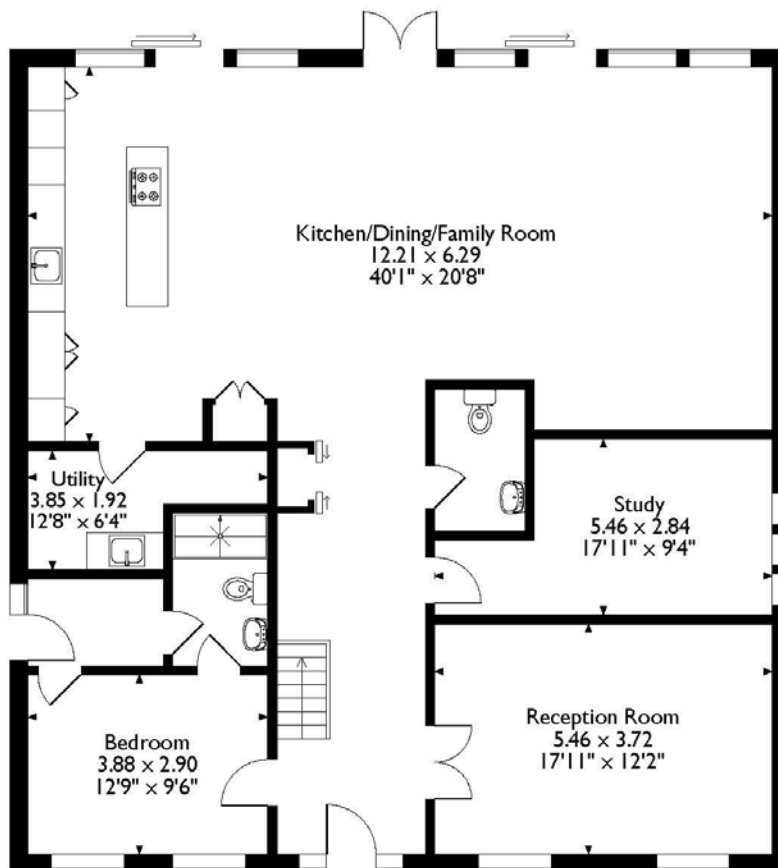
Energy Efficiency Rating: Band C



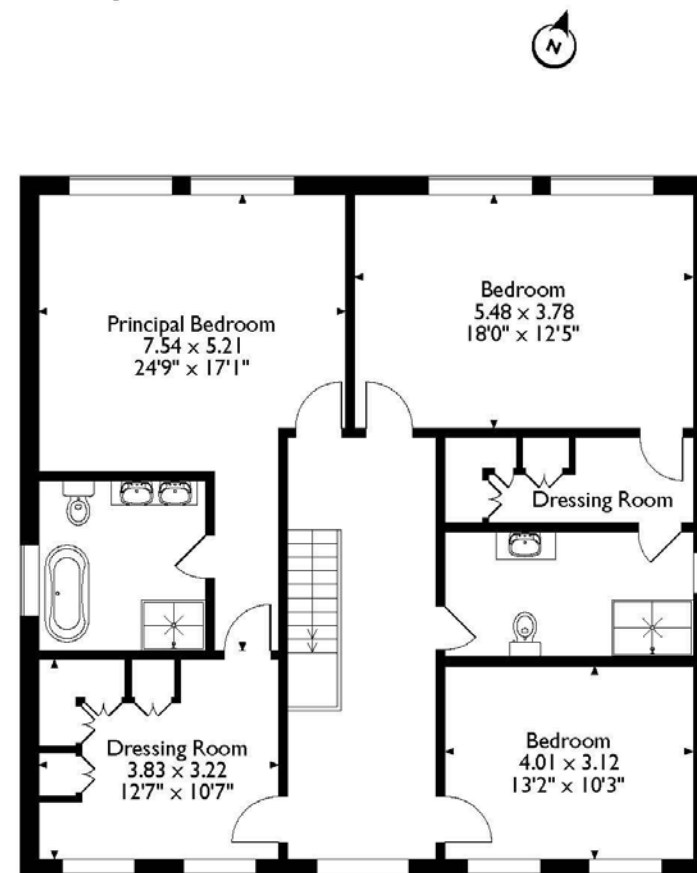
# Bishops Avenue, Northwood, Middlesex

## Approximate Gross Internal Area

### 267 Sq M/2874 Sq Ft



**Ground Floor**



**First Floor**

Please note that the location of doors, windows and other items are approximate and this floorplan is to be used for illustrative purposes only. Unauthorized reproduction is prohibited.

# ROBSONS

Address The Estate Office, North Approach, Moor Park, Northwood, HA6 2JQ

Tel: 01923 820622 moorpark@robsonswb.com

[www.robsonswb.com](http://www.robsonswb.com)

Important notice: Robsons, their clients and any joint agents give notice that 1: They are not authorised to make or give any representations or warranties in relation to the property either here or elsewhere, either on their own behalf or on behalf of their client or otherwise. They assume no responsibility for any statement that may be made in these particulars. These particulars do not form part of any offer or contract and must not be relied upon as statements or representations of fact. 2: Any areas, measurements or distances are approximate. Plot sizes and dimensions are taken from Promap and are approximate. The text, photographs and plans are for guidance only and are not necessarily comprehensive. It should not be assumed that the property has all necessary planning, building regulation or other consents and Robsons have not tested any services, equipment or facilities. Purchasers must satisfy themselves by inspection or otherwise.