



A THREE BEDROOM DUPLEX APARTMENT WITHIN THE MOOR PARK ESTATE

Wolsey Mansions, Wolsey Road, Moor Park, HA6 2HL

ROBSONS

Wolsey Mansions, Wolsey Road, Moor Park, HA6 2HL

THREE BEDROOMS • DUPLEX APARTMENT • MOOR PARK ESTATE • FITTED KITCHEN • LIGHT AND SPACIOUS ROOMS • CLOSE TO STATION • LONG LEASE

Description

A well presented three bedroom duplex apartment located within the sought-after Moor Park estate, conveniently located moments from Moor Park station and shops.

The apartment comprises a spacious entrance hall leading through to a large living/dining room and a fully fitted kitchen. There is the added benefit of a downstairs w/c.

To the first floor there are two good sized bedrooms, a further single bedroom and a family bathroom.

The apartment is available to the market with the benefit of a long lease.





Conveniently located in close proximity for Moor Park's shops, restaurants and the Metropolitan Line train station. Northwood and Rickmansworth town centres are also accessible and offer a further wide range of shops and restaurants. The local area is well served for state and private schools, which includes Merchant Taylors' Prep and Senior Schools, which are both on the estate. Leisure facilities include; five golf courses, cricket and football clubs as well as fitness centres. Major motorways and airports are also within reach.

Additional Information

Tenure: Leasehold

Lease Length: From and including 2nd July 2019 to and including 24 March 2187

Local Authority: Three Rivers

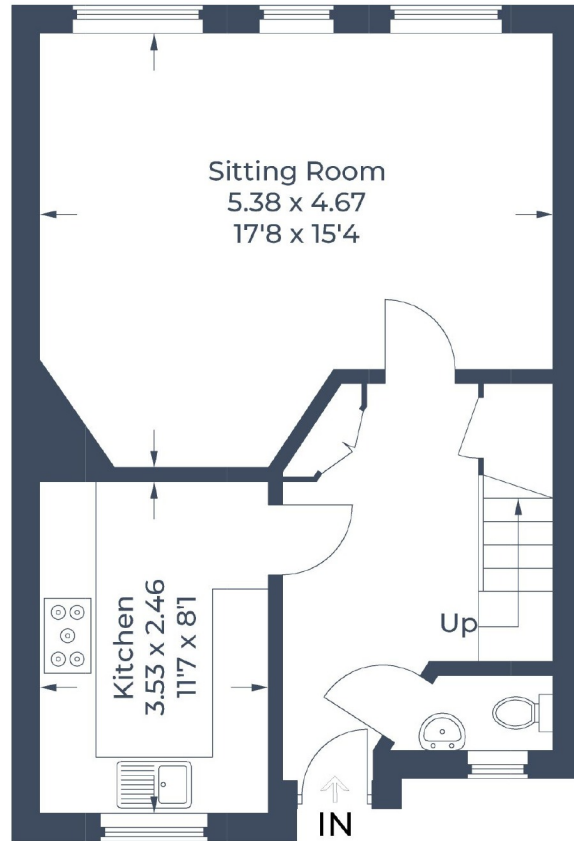
Council Tax Band: E

Energy Efficiency Rating: D

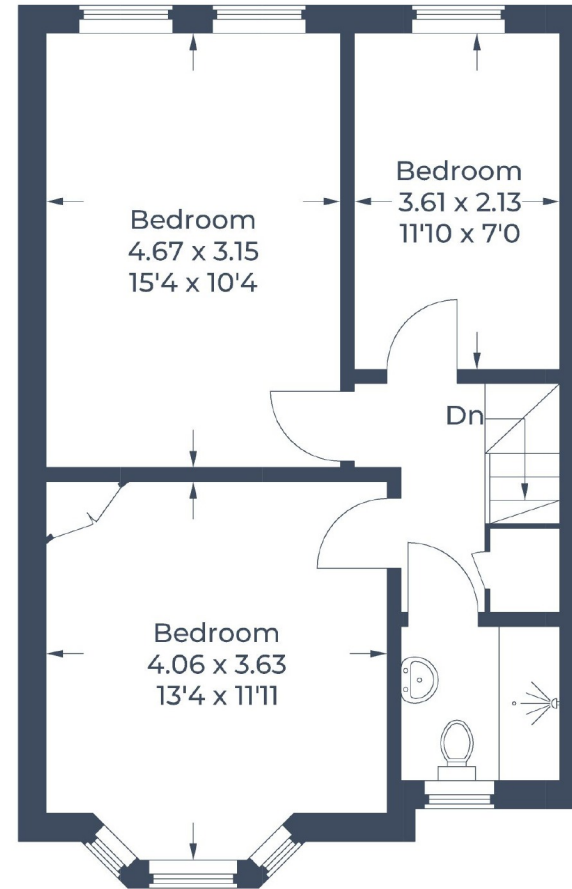
For additional information, please refer to www.robsonswb.com or call us on: 01923 820622.



Approximate Gross Internal Area
Ground Floor = 44.3 sq m / 477 sq ft
First Floor = 46.1 sq m / 496 sq ft
Total = 90.4 sq m / 973 sq ft



Ground Floor



First Floor

Illustration for identification purposes only,
measurements are approximate, not to scale.
© CJ Property Marketing Produced for Robsons

ROBSONS

North Approach, Moor Park, Northwood HA6 2JQ
Tel: 01923 820622 Email: moorpark@robsonswb.com

www.robsonswb.com

SCAN TO VISIT



OUR WEBSITE