



A STUNNING CONTEMPORARY 5 BEDROOM 5 BATHROOM HOME

London Road, Rickmansworth, Hertfordshire WD3 1JR





EASTGLADE

London Road, Rickmansworth, Hertfordshire WD3 1JR

GROUND FLOOR - TWO RECEPTION ROOMS • LEICHT KITCHEN WITH MIELE APPLIANCES OPEN PLAN TO THE DINING AREA AND FURTHER RECEPTION ROOM • PRINCIPAL BEDROOM WITH ENSUITE DRESSING ROOM AND BATHROOM • FOUR FURTHER BEDROOMS ALL WITH ENSUITE FACILITIES • CLOAKROOM • LOWER GROUND FLOOR - GAMES ROOM • SAUNA • GYM • CLOAK/SHOWER ROOM • PLANT ROOM • SECLUDED LANDSCAPED REAR GARDEN • LARGE PATIO AREA • DOUBLE GARAGE • AMPLE PARKING • GATED • AIR CONDITIONING • LUTRON LIGHTING • SONOS SOUND SYSTEM • UNDER FLOOR HEATING • 10 YEAR NHBC GAURANTEE

Description

A stunning example of modern contemporary architecture, this newly constructed 5 bedroom, 5 bathroom detached residence, offers spacious light filled accommodation over three well-appointed levels with panoramic views over Moor Park golf course and surrounding countryside. The extensive ground floor accommodation comprises a spacious entrance hall with guest cloakroom and bespoke marble and glass staircase. Double doors lead through to a living room with marble fireplace surround, continuing through to a large open plan kitchen/dining/living area with sliding doors to the outside terrace. The stylish kitchen, created by German designers, Leicht, features an island/breakfast bar finished with marble worktops and natural solid wood edging, integrated Miele appliances and a range of full height handleless units.

Accessed from the main entrance hall, double doors open through to a principal bedroom suite with walk-in dressing room and luxurious ensuite bathroom with double rain shower enclosure, his & hers basins, wc, freestanding bath tub and inset TV and speakers. There are four further double bedrooms, all with fitted wardrobes and ensuite shower rooms. The lower ground floor, designed with leisure and entertaining in mind, offers a spacious inner lobby with kitchenette, opening into an air-conditioned games/cinema room with bi-fold doors to an outer courtyard. After using the gym, you can enjoy the steam room and sauna, plus a shower room and wc. Completing the lower ground floor is a plant room for the heating and airflow systems, and a server room for the electronic systems.

Crowning this stunning home is a first floor recreation room/study, and outside terrace with 360 degree views of surrounding countryside, Rickmansworth town centre and Moor Park golf course. Occupying a half acre plot, the gated entrance reveals a generous driveway providing secure off street parking for multiple vehicles, and access to an integral double garage. To the rear is a raised tiled terrace with glass balustrades and steps down to a well-tended lawn extending to approximately 190 feet in length, with flowerbed borders.

Location

The property is located close to the amenities of both Rickmansworth and Northwood town centres with a wide range of boutique shops, coffee houses, restaurants and the major supermarkets. The Metropolitan and Chiltern line train services connects you to London Baker Street, Marylebone Station and beyond. The M25 motorway is available at both junction 17 and 18 connecting you to the national motorway network. Major London airports are also within reach. The area is well served for good quality private and state schools for all ages. Chorleywood and Rickmansworth offer everything for the sporting individual from cricket, football, tennis, horse riding and golf. Water sports are also well catered for Rickmansworth Aquadrome.

Tenure: Freehold

Energy Efficiency Rating: C

Local Authority: Three Rivers District Council

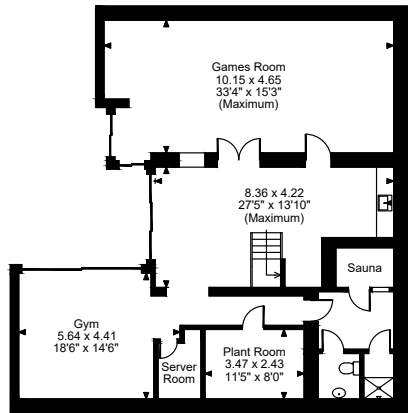
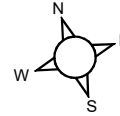
Council Tax Band: TBC







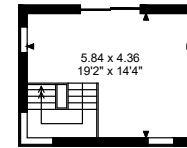
Eastglade, London Road, Rickmansworth
Approximate Gross Internal Area
Main House = 5491 Sq Ft/510 Sq M
Garage = 394 Sq Ft/37 Sq M
Total = 5885 Sq Ft/547 Sq M



Lower Ground Floor



Ground Floor



First Floor

FOR ILLUSTRATIVE PURPOSES ONLY - NOT TO SCALE

The position & size of doors, windows, appliances and other features are approximate only.

© ehouse. Unauthorised reproduction prohibited. Drawing ref. dig/8550915/KKM



The Estate Office, North Approach, Moor Park, Middlesex HA6 2JQ

Tel: 01923 820622 moorpark@robsonswb.com

www.robsonswb.com

Important notice: Robsons, their clients and any joint agents give notice that 1: They are not authorised to make or give any representations or warranties in relation to the property either here or elsewhere, either on their own behalf or on behalf of their client or otherwise. They assume no responsibility for any statement that may be made in these particulars. These particulars do not form part of any offer or contract and must not be relied upon as statements or representations of fact. 2: Any areas, measurements or distances are approximate. Plot sizes and dimensions are taken from Promap and are approximate. The text, photographs and plans are for guidance only and are not necessarily comprehensive. It should not be assumed that the property has all necessary planning, building regulation or other consents and Robsons have not tested any services, equipment or facilities. Purchasers must satisfy themselves by inspection or otherwise.

