



## DETACHED FIVE BEDROOM HOME IN THE EASTBURY FARM ESTATE

The Fairway, Northwood, Middlesex, HA6 3DY



**FIVE BEDROOMS • TWO BATHROOMS • OPEN-PLAN KITCHEN/LIVING AREA • DRIVEWAY PARKING • GARAGE • LARGE REAR GARDEN • EASTBURY FARM ESTATE •**

An opportunity to acquire this beautifully presented, five bedroom, two bathroom detached residence, ideally positioned in the heart of the much sought after Eastbury Farm estate.

This spacious family home comprises an entrance porch, opening through to a welcoming entrance hall with fireplace and a guest cloakroom. To the front aspect is a formal dining room with arched double doors leading to a light-filled living room with large windows and bi-fold doors to the rear garden. The hub of the home is a stylish, open-plan kitchen/dining/family room, featuring an island and white-fronted cabinets, finished with grey quartz worktops, integrated appliances and bi-folds accessing the rear patio. Completing the ground floor is a separate utility room with an internal door to the garage.

To the first floor, the principal bedroom suite comprises a fully fitted dressing room, a large ensuite bathroom with both a bath and separate shower cubicle, and bedroom with views of the rear garden. There are a further four bedrooms, one of which is currently used as a study, plus a family bathroom.





The attractive rear garden extends to approximately 130 feet in length and is mostly laid to lawn with mature shrub and flowerbed borders and a paved patio area providing the perfect space for outside entertaining.

To the front is a small lawn and flowerbed, and a block-paved driveway providing ample off street parking.

### **Location**

The property is equidistant from both Northwood and Moor Park, with their boutique shops, eateries and supermarkets. The Metropolitan Line train stations serve both town centres, which provide access to Baker Street, The City and beyond. The area is also well served for highly rated schools for all ages and has the well regarded Eastbury Farm School on the estate. Recreational facilities cater for those enjoying a sporting life, with four major golf courses, cricket and football clubs and two fitness centres. Places of worship are also well catered for in the surrounding area and motorway links to M25 and M1 are nearby.

### **Additional Information**

Tenure: Freehold

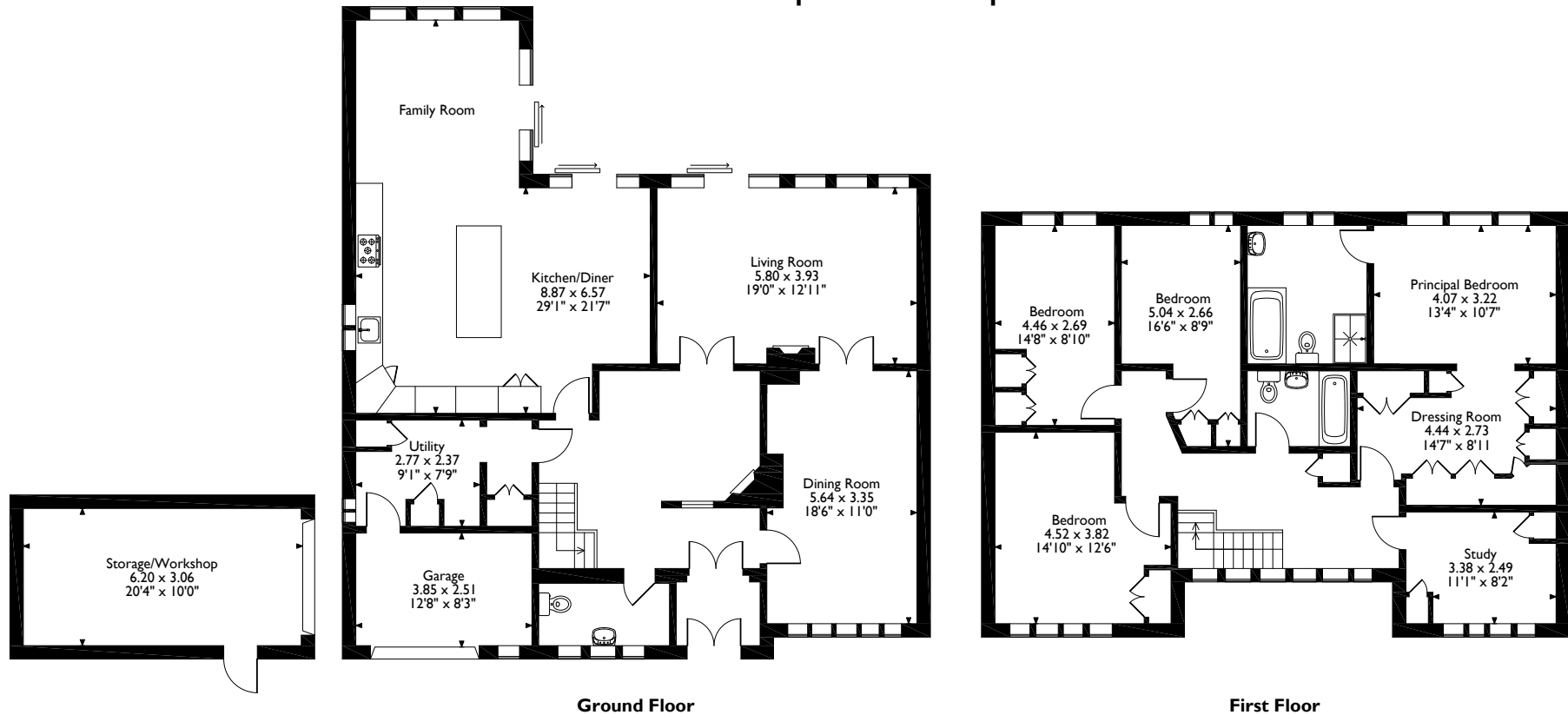
Local Authority: Three Rivers District Council

Council Tax: Band G

Energy Efficiency Rating: Band D



The Fairway, Northwood  
 Approximate Gross Internal Area  
 Main House = 245 Sq M/2637 Sq Ft  
 Storage/Workshop = 19 Sq M/204 Sq Ft  
 Total = 264 Sq M/2841 Sq Ft



Please note that the location of doors, windows and other items are approximate and this floorplan is to be used for illustrative purposes only. Unauthorized reproduction is prohibited.



Address: The Estate Office, North Approach, Moor Park, HA6 2JQ  
 Tel: 01923 820622 moorpark@robsonswb.com  
[www.robsonswb.com](http://www.robsonswb.com)

Important notice: Robsons, their clients and any joint agents give notice that 1: They are not authorised to make or give any representations or warranties in relation to the property either here or elsewhere, either on their own behalf or on behalf of their client or otherwise. They assume no responsibility for any statement that may be made in these particulars. These particulars do not form part of any offer or contract and must not be relied upon as statements or representations of fact. 2: Any areas, measurements or distances are approximate. Plot sizes and dimensions are taken from Promap and are approximate. The text, photographs and plans are for guidance only and are not necessarily comprehensive. It should not be assumed that the property has all necessary planning, building regulation or other consents and Robsons have not tested any services, equipment or facilities. Purchasers must satisfy themselves by inspection or otherwise.