



## A FIVE BEDROOM, FOUR BATHROOM DETACHED FAMILY HOME

---

Old Gannon Close, Moor Park, Northwood, Middlesex HA6 2LU

**ROBSONS**



# A FIVE BEDROOM, THREE BATHROOM DETACHED FAMILY HOME

OLD GANNON CLOSE, MOOR PARK,  
NORTHWOOD, MIDDLESEX, HA6 2LU

**FIVE BEDROOMS • FOUR BATHROOMS**  
**• ENTRANCE HALL • KITCHEN/DINING**  
**ROOM • TWO RECEPTION ROOMS • STUDY**  
**• CINEMA ROOM • GROUND FLOOR WC •**  
**REAR GARDEN • GYM • DOUBLE GARAGE •**  
**LAUNDRY JET & CENTRAL VACUUM SYSTEM**

## Description

A stylish five bedroom, four bathroom detached residence, ideally positioned in a quiet close within the private Moor Park estate. This fabulous family home has been finished to a high specification, offering just over 5000 sqft of accommodation on three well-appointed levels. A spacious entrance hall with central Oak staircase, gives access to the modern kitchen diner, fitted with a range of grey high gloss cabinets with integrated Miele appliances, an island/breakfast bar and contrasting worktops.

Double doors lead through to a generous lounge/dining room and a further living room, both with feature bay windows and French doors to the rear garden. Completing the ground floor is a study/bedroom and guest cloakroom.







### Description continued

To the first floor is a principal bedroom with a luxurious dressing room and ensuite bathroom, concealed behind a velour-panelled wall. There are four further double bedrooms with fitted wardrobes, one with an ensuite shower room, plus a separate family bathroom.

A lower ground level comprises an impressive cinema room, shower room and wc, and the utility room with boiler, two megaflows and a laundry jet system to all bedrooms. A few steps lead to the indoor swimming pool complex, which is being improved and will require further works to complete. The rear garden extends to approximately 180 feet in length and is mostly laid to lawn with mature shrub and flowerbed borders, multiple paved seating areas and a brick built gymnasium. A block paved to the front provides ample off street parking and access to an integral double garage.

### Location

Conveniently located within walking distance from Moor Park shops, restaurants and the Metropolitan Line station, with train services leading to Baker Street and The City. The local area is well served for state and private schools, which includes Merchant Taylors' Prep and Senior Schools, both are on the estate. The area is also well served for Leisure facilities.

### Additional Information

Tenure: Freehold

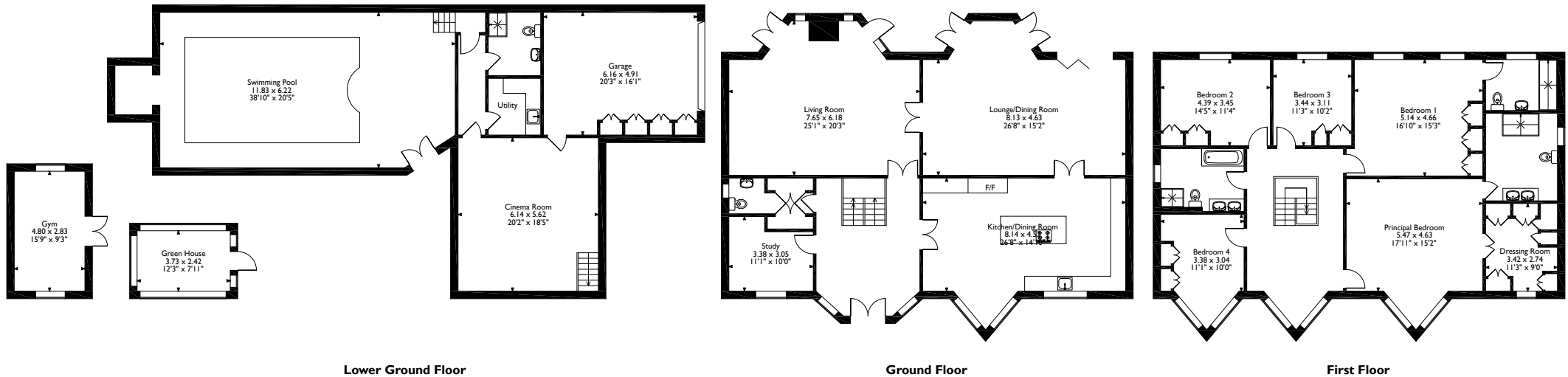
Local Authority: Three Rivers District Council

Council Tax: H

Energy Efficiency Rating: C



Old Gannon Close, Northwood  
 Approximate Gross Internal Area  
 Main House = 474 Sq M/5102 Sq Ft  
 Outbuilding = 23 Sq M/248 Sq Ft  
 Total = 497 Sq M/5350 Sq Ft



Please note that the location of doors, windows and other items are approximate and this floorplan is to be used for illustrative purposes only. Unauthorized reproduction is prohibited.



The Estate Office, North Approach, Moor Park, Middlesex HA6 2JQ  
 Tel: 01923 820622 moorpark@robsonswb.com  
[www.robsonswb.com](http://www.robsonswb.com)

Important notice: Robsons, their clients and any joint agents give notice that 1: They are not authorised to make or give any representations or warranties in relation to the property either here or elsewhere, either on their own behalf or on behalf of their client or otherwise. They assume no responsibility for any statement that may be made in these particulars. These particulars do not form part of any offer or contract and must not be relied upon as statements or representations of fact. 2: Any areas, measurements or distances are approximate. Plot sizes and dimensions are taken from Promap and are approximate. The text, photographs and plans are for guidance only and are not necessarily comprehensive. It should not be assumed that the property has all necessary planning, building regulation or other consents and Robsons have not tested any services, equipment or facilities. Purchasers must satisfy themselves by inspection or otherwise.