



A SPACIOUS FAMILY HOME IN THE DESIRABLE EASTBURY FARM ESTATE

Farm Way, Northwood, Middlesex, HA6 3EF

ROBSONS

DETACHED FAMILY HOME IN THE EASTBURY FARM ESTATE

LIVING ROOM • dining room • family room • conservatory • kitchen / breakfast room • guest cloak room • master bedroom with en-suite bathroom • 3 further bedrooms • family bathroom • mature rear garden • garage

A four bedroom, two bathroom detached residence perfectly positioned in the highly desirable Eastbury Farm Estate.

This spacious family home comprises an entrance hall with guest cloakroom, leading through to a living room opening to the dining area with double doors to the family room and conservatory providing views and access to the stunning rear garden. A well-proportioned fitted kitchen combines with the breakfast room, plus a utility/store area.

To the first floor is a spacious landing area accessing a master bedroom with fitted wardrobes and an ensuite bathroom, three further bedrooms and a family bathroom.





To the rear is a beautifully maintained garden extending to approximately 147 feet in length with its well-manicured lawn, mature flower beds and a paved patio area. The attractive front garden has a carriage driveway providing ample off street parking and access to a garage at the side.

The property is equidistant from both Northwood and Moor Park, with their choice boutique shops, coffee houses, restaurants and Metropolitan Line train stations. The train services provides access to Baker Street, The City and beyond. The area is also well served for good quality schools for all ages and genders. Recreational facilities cater for those enjoying a sporting life, with four major golf courses, cricket and football clubs and two fitness centres.

Tenure: Freehold

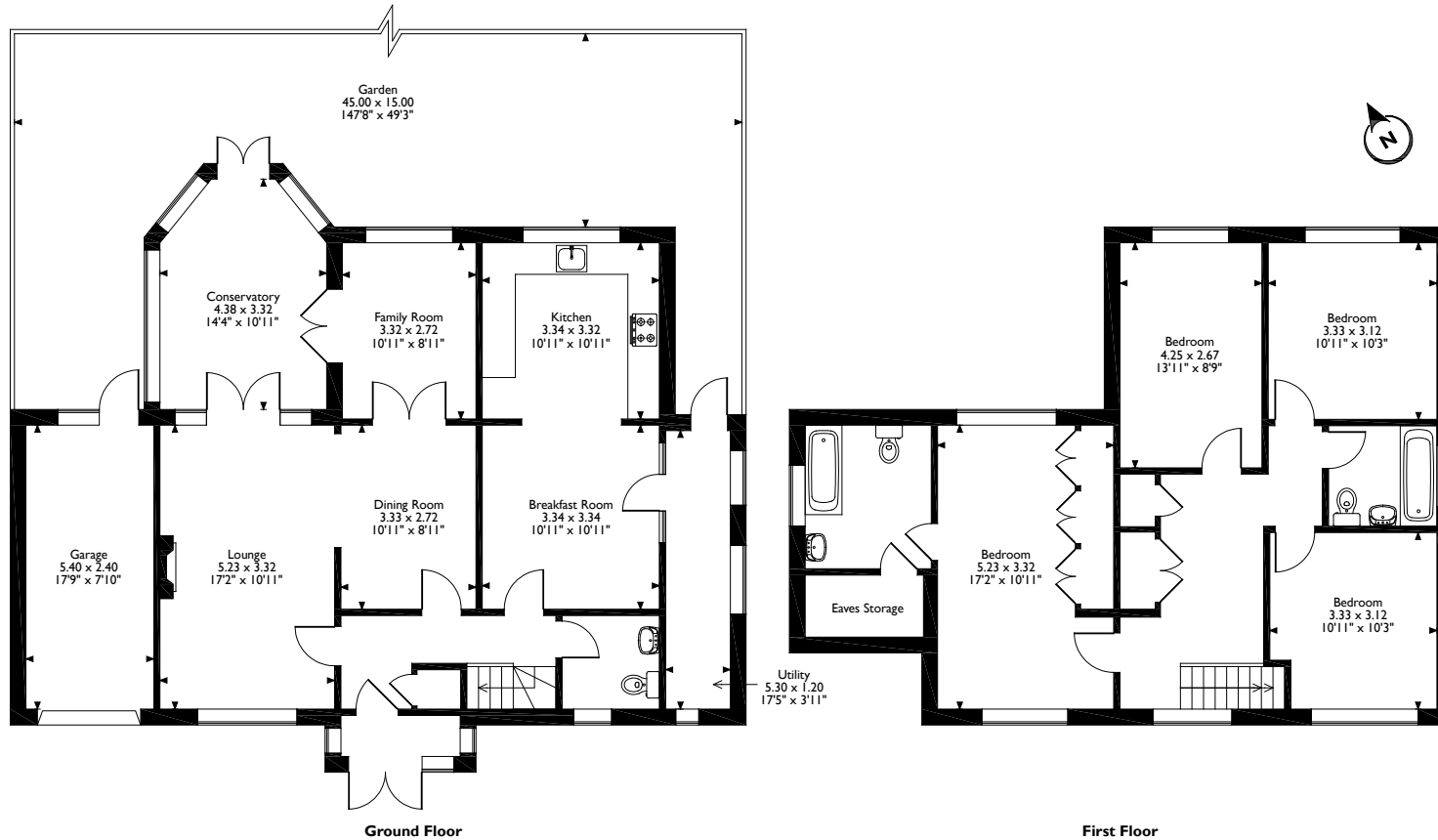
Local Authority: Three Rivers District Council

Energy Efficiency Rating: Band E

Council Tax Band: G



Farm Way , Northwood
Approximate Gross Internal Area
Ground Floor = 110 Sq M/1183 Sq Ft
First Floor = 79 Sq M/851 Sq Ft
Total = 189 Sq M/2034 Sq Ft



Please note that the location of doors, windows and other items are approximate and this floorplan is to be used for illustrative purposes only. Unauthorized reproduction is prohibited.



The Estate Office, North Approach, Moor Park, Northwood, Middlesex, HA6 2JQ
 Tel: 01923 820622 moorpark@robsonswb.com
www.robsonswb.com