



A FIVE BEDROOM, FOUR BATHROOM DETACHED RESIDENCE

Farm Way, Northwood, Middlesex HA6 3EG

ROBSONS

FIVE DOUBLE BEDROOMS • FOUR BATHROOMS • 39FT LIVING ROOM • FORMAL DINING ROOM • MODERN KITCHEN/DINER • UTILITY ROOM • GYM/STUDY • TV ROOM • SNUG • GARAGE • SOUTH WESTERLY FACING REAR GARDEN

Description

An opportunity to acquire one of the finest homes in Northwood's Eastbury Farm estate.

This magnificent five bedroom, four bathroom detached family home has been thoughtfully extended, creating spacious and versatile interiors and finished in traditional, elegant styling.

The ground floor comprises a welcoming entrance hall with guest cloakroom, flowing through to a TV room, formal dining room, gym/study, and double doors opening through to an impressive 39ft living room with triple aspect windows and bi-fold doors to the rear patio. The generous kitchen diner is fitted with a range of Shaker style cabinets, providing ample storage, with integrated appliances, contrasting black granite worktops and French doors to the garden. Continuing through from the kitchen is a snug seating area with fitted desk, an internal door to the garage, plus a separate utility room.





Description...

To the first floor, the impressive principal bedroom has high vaulted ceilings, a range of fitted wardrobes and a luxurious ensuite bathroom with freestanding bath tub, large shower enclosure, 'his & hers' basins enclosed in a vanity unit and concealed flush WC. There are four further double bedrooms, two of which have the benefit of ensembles, plus a separate family bathroom.

Outside, the south-westerly facing rear garden offers a large paved patio area, overlooking the well-tended lawn with mature conifer and laurel hedges affording privacy. The attractive front garden has an area laid to lawn with mature flower beds and a paved driveway providing off street parking for four vehicles and access to the integral garage.

The property is equidistant from both Northwood and Moor Park, with their boutique shops, eateries and supermarkets. The Metropolitan Line train stations serve both town centres, which provide access to Baker Street, The City and beyond. The area is also well served for good quality schools for all ages and has the well regarded Eastbury Farm School on the estate. Recreational facilities cater for those enjoying a sporting life, with four major golf courses, cricket and football clubs and two fitness centres.

Additional Information

Tenure: Freehold

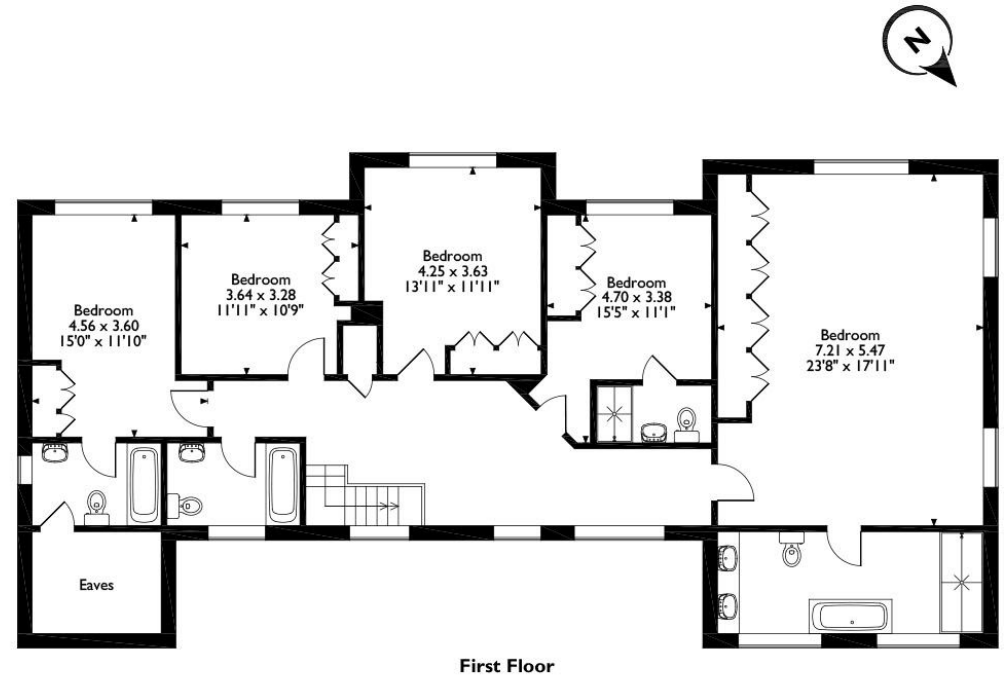
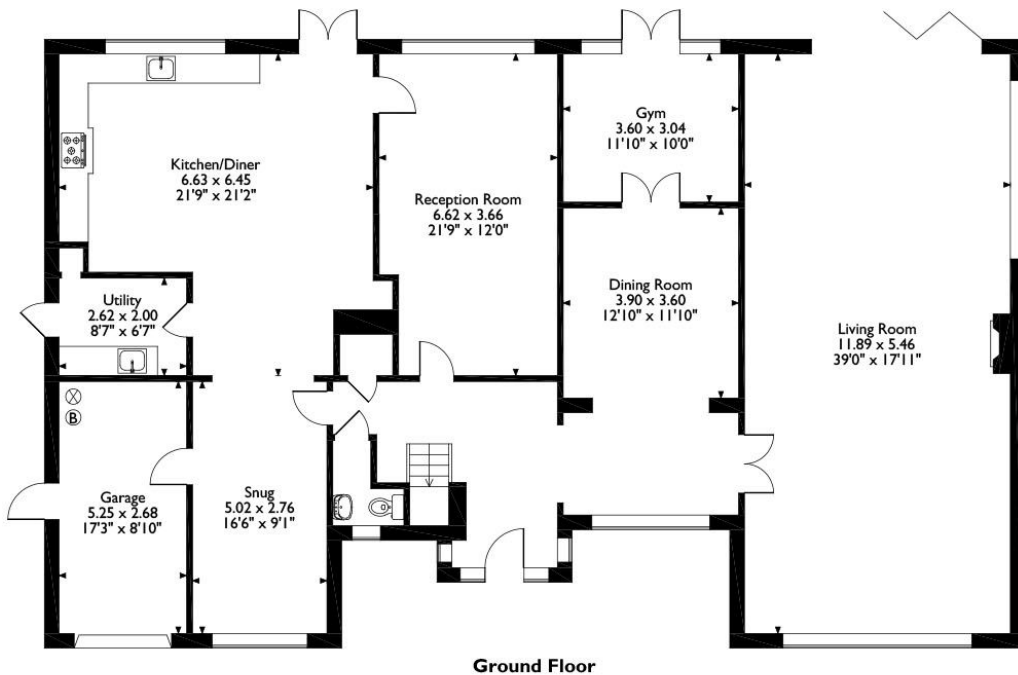
Local Authority: Three Rivers District Council

Council Tax: Band G - Energy Efficiency Rating: Band C



Farm Way, Northwood, Middlesex

Approximate Gross Internal Area 359 Sq M/3864 Sq Ft



Please note that the location of doors, windows and other items are approximate and this floorplan is to be used for illustrative purposes only. Unauthorized reproduction is prohibited.



The Estate Office, North Approach, Moor Park, Northwood, Middlesex HA6 2JQ
Tel: 01923 820622 moorpark@robsonswb.com

www.robsonswb.com N.B. For full disclosure, there is a personal interest to declare, vendors connected to Robsons

Important notice: Robsons, their clients and any joint agents give notice that 1: They are not authorised to make or give any representations or warranties in relation to the property either here or elsewhere, either on their own behalf or on behalf of their client or otherwise. They assume no responsibility for any statement that may be made in these particulars. These particulars do not form part of any offer or contract and must not be relied upon as statements or representations of fact. 2: Any areas, measurements or distances are approximate. Plot sizes and dimensions are taken from Promap and are approximate. The text, photographs and plans are for guidance only and are not necessarily comprehensive. It should not be assumed that the property has all necessary planning, building regulation or other consents and Robsons have not tested any services, equipment or facilities. Purchasers must satisfy themselves by inspection or otherwise.