

9 Lynton Parade
Turners Hill
Cheshunt
Hertfordshire
EN8 8LF

T: 01992 635735
www.kings-group.net



Parkside, EN8 7TH



£210,000 Leasehold

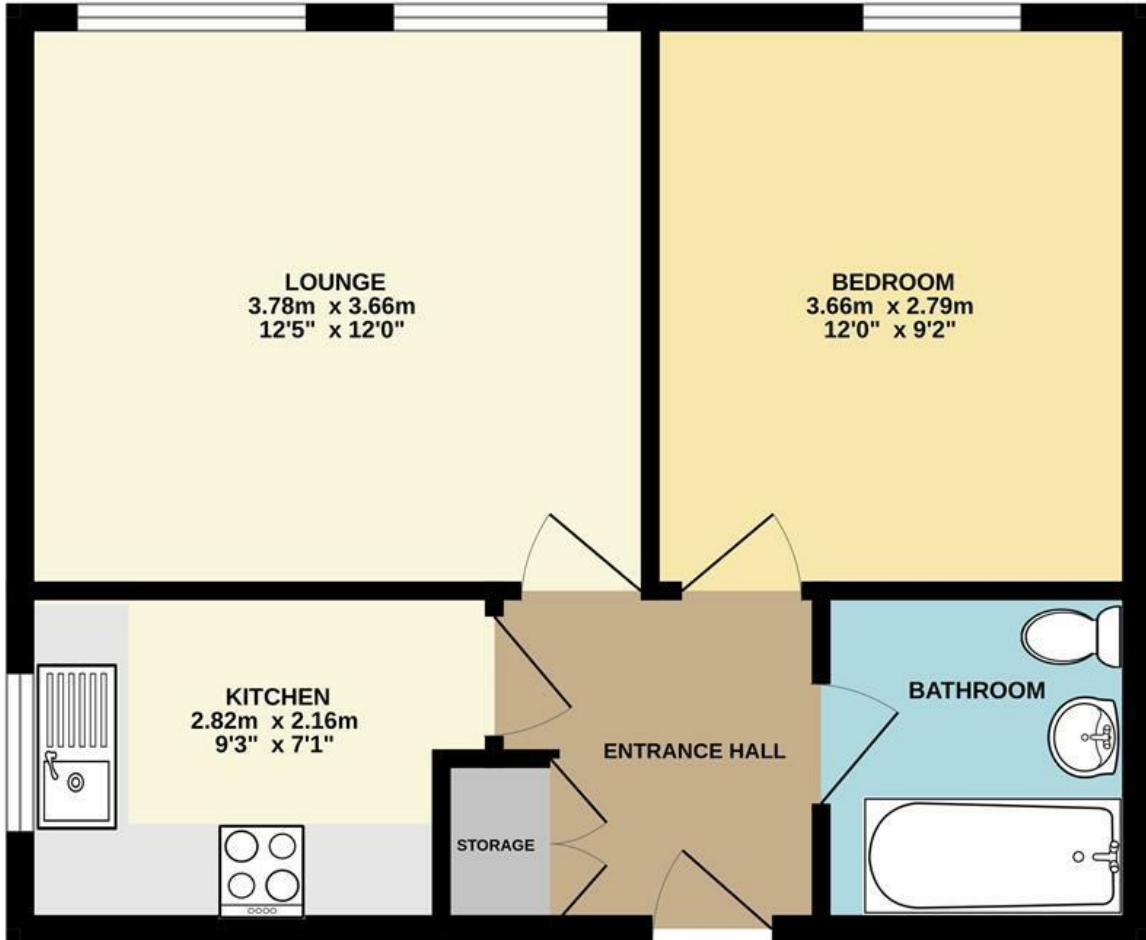


Kings Group - Cheshunt are delighted to offer this SPACIOUS ONE BEDROOM GROUND FLOOR FLOOR FLAT

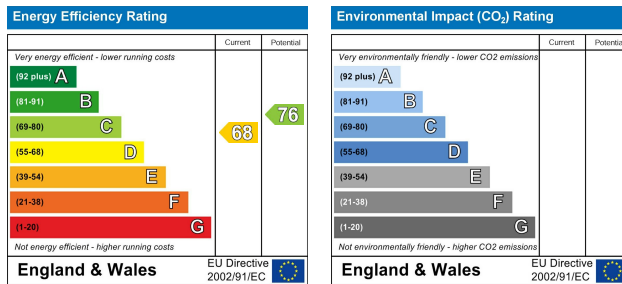
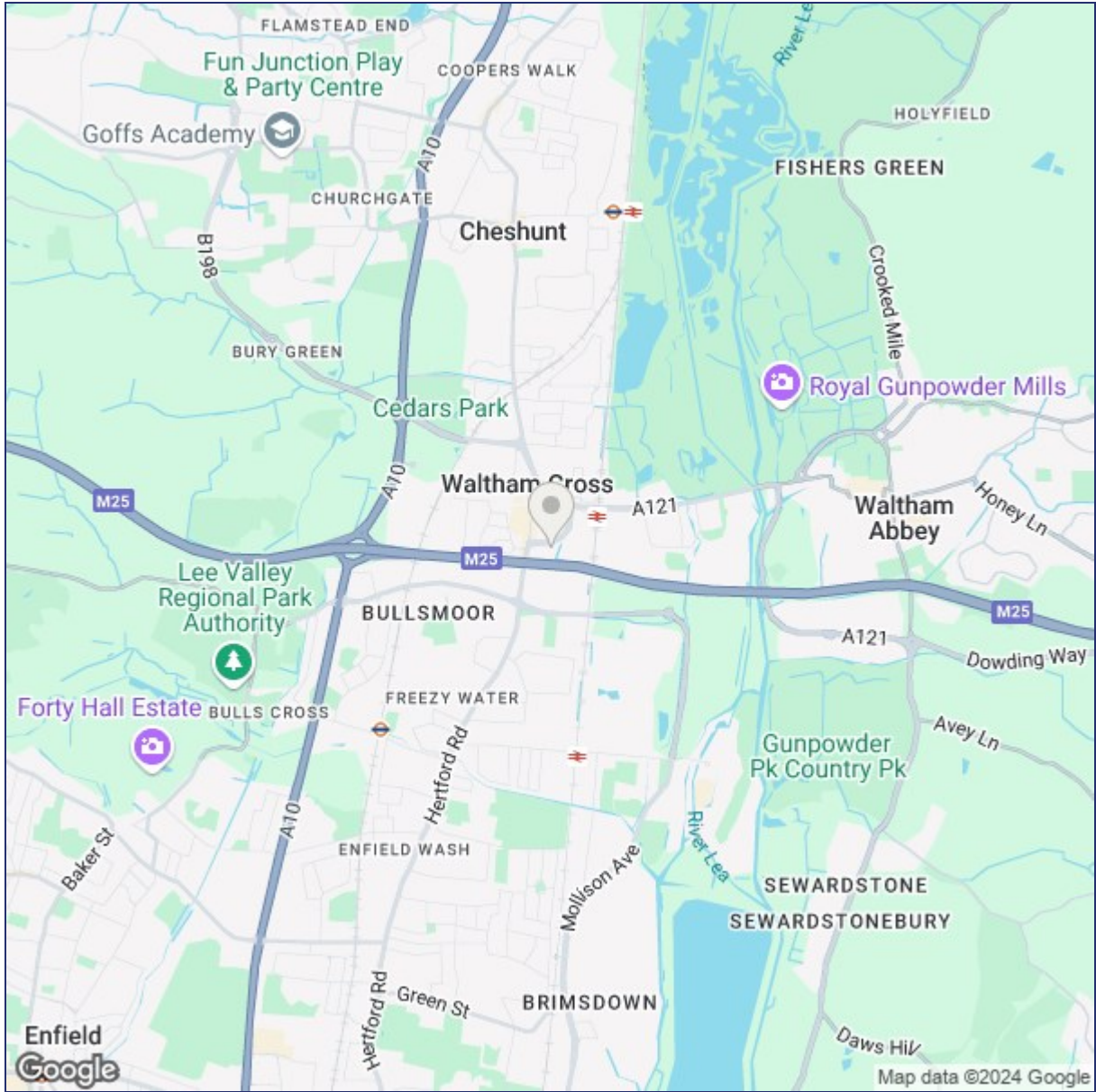
This spacious ground floor flat is the ideal purchase for any first time buyer or investor. The property benefits from being located in the heart of Waltham Cross meaning that the property is located near to great transport links such as the A10 and M25 both roads being accessible in under 5 minutes proving easy access to London and the surrounding areas with the added bonus of having Waltham Cross station and Waltham cross bus depot both just 0.5 miles away from the property also offering great links to London and the surrounding areas. Finsbury Court ,Parkside also has local shops and amenities just walking distance way with the Pavilions shopping center just 0.3 miles away there is a wide choice of shops to choose from.

The accommodation comprises of spacious lounge, kitchen and bathroom, and large double bedroom, UPVC double glazed windows throughout, allocated parking, an entry phone system and gas central heating. We highly recommend internal viewings on this spacious flat please contact us on 01992 635 735 to arrange a viewing.

GROUND FLOOR



Whilst every attempt has been made to ensure the accuracy of the floorplan contained here, measurements of doors, windows, rooms and any other items are approximate and no responsibility is taken for any error, omission or mis-statement. This plan is for illustrative purposes only and should be used as such by any prospective purchaser. The services, systems and appliances shown have not been tested and no guarantee as to their operability or efficiency can be given.
Made with Metropix ©2024



(“These details are correct at time of going to press”).

THE PROPERTY MISDESCRIPTIONS ACT 1991. The agent has not tested any apparatus, equipment, fixtures or services and so cannot verify that they are in working order, or fit for the purpose. References to the Tenure of a property are based on information supplied by the vendor. The agent has not had sight of the Title documents. A buyer is advised to obtain verification from their Solicitor or Surveyor.

