



kings  
GROUP



[www.kings-group.net](http://www.kings-group.net)

19 Eastgate  
Harlow CM20 1HP  
Tel: 01279 433033

**Tilbury Mead, Harlow, CM18 6JE**  
**Offers In The Region Of £325,000**



Exclusive to Kings Group - THREE BEDROOM TERRACED HOUSE for sale located in Tilbury Mead, Harlow. This ideal first time family home is brilliantly located close to all of local amenities including the M11 just a 10 minute drive away giving you direct access into London, Cambridge and Stansted Airport. The property is also just a 5 minute walk from Passmores Academy and a 7 minute walk from Purford Green Primary School making it ideal for young families. This spacious property has been renovated throughout, including rewire, new combi boiler and decoration throughout.

The property comprises spacious lounge / diner, modern kitchen, office space, three good sized bedrooms and first floor family bathroom. The property also benefits from solar panels, parking spaces available to rent from the council and beautiful garden.

OPEN DAY - 11th SEPTEMBER 2021 - ALLOCATED VIEWINGS



Entrance Hall

3'44 x 3'47 (0.91m x 0.91m)

Tiled flooring, coved ceiling, alarm panel.

Reception

11'56 x 21'98 (3.35m x 6.40m)

Double glazed window to front and rear aspect, two double radiators, laminate flooring, phone point, TV aerial point, power points, coved textured ceiling.

Reception Two

5'37 x 11'40 (1.52m x 3.35m)

Double glazed window to front aspect, single radiator, under stair cupboard, tiled flooring, tiled flooring, meter cupboard, smoke alarm, power points, textured ceiling.

Kitchen

7'34 x 10'60 (2.13m x 3.05m)

Double glazed window to rear aspect, tiled flooring, tiled splash back walls, roll top wall and base units, integrated cooker, electric oven, gas hob, chimney style extractor fan, drainer unit sink, space for fridge freezer, plumbing for washing machine and dishwasher, smoke alarm, power points, coved ceiling, double glazed door leading to garden.

First Floor Landing

Loft access, carpeted flooring, power points, smoke alarm, airing cupboard, coved ceiling.

Bathroom

7'41 x 5'84 (2.13m x 1.52m)

Double glazed window to rear aspect, radiator, heated towel rail, tiled floor, extractor fan, panel enclosed bath with mixer tap, shower attached, thermostatically controlled shower, wash basin with mixer tap, vanity unit under sink, low level W.C, tiled walls.

Bedroom One

10'15 x 11'85 (3.05m x 3.35m)

Double glazed window to front aspect, double radiator, carpeted flooring, power points, smoke alarm, coved ceiling.

Bedroom Two

11'71 x 10'80 (3.35m x 3.05m)

Double glazed window to rear aspect, Double radiator, carpeted flooring, TV aerial point, power points, coved ceiling.

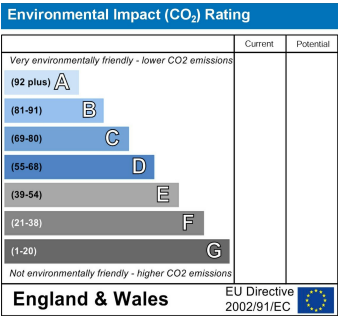
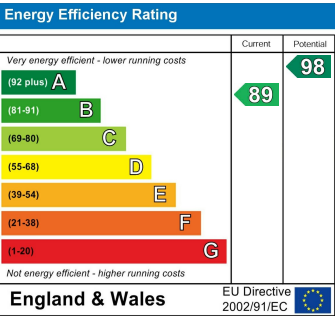
Bedroom Three

5'68 x 12'01 (1.52m x 3.68m)

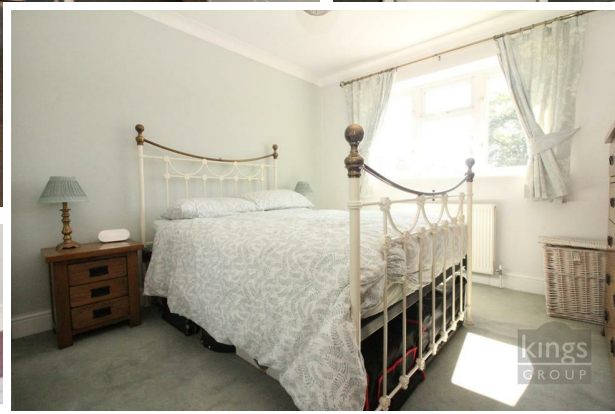
Double glazed window to rear aspect, Double radiator, carpeted flooring, two built in storage cupboard, power points, coved ceiling.

Garden

Mainly laid to lawn with plant and shrub boarder, patio, water tap, security light, power points.





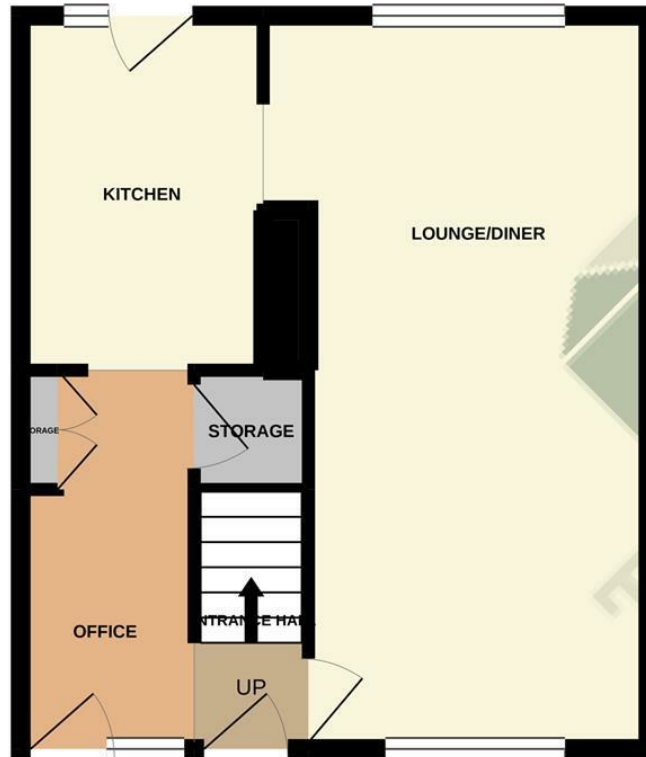




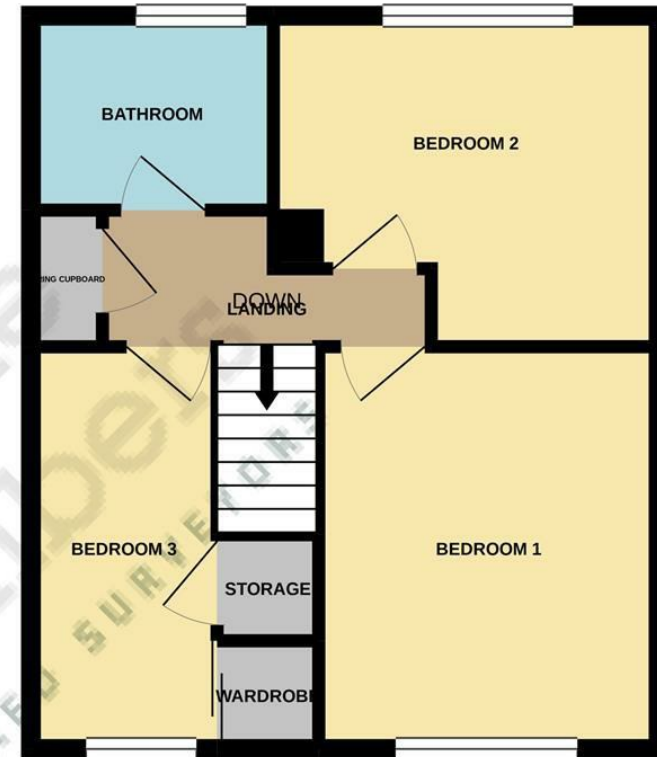


kings  
GROUP

GROUND FLOOR  
37.3 sq.m. (402 sq.ft.) approx.



1ST FLOOR  
37.7 sq.m. (406 sq.ft.) approx.



TOTAL FLOOR AREA : 75.0 sq.m. (807 sq.ft.) approx.

Whilst every attempt has been made to ensure the accuracy of the floorplan contained here, measurements of doors, windows, rooms and any other items are approximate and no responsibility is taken for any error, omission or mis-statement. This plan is for illustrative purposes only and should be used as such by any prospective purchaser. The services, systems and appliances shown have not been tested and no guarantee as to their operability or efficiency can be given.  
Made with Metropix ©2021

