



kings
GROUP



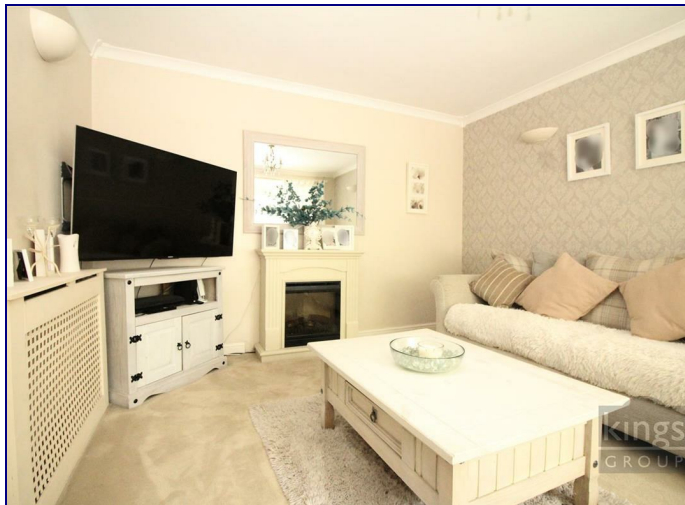
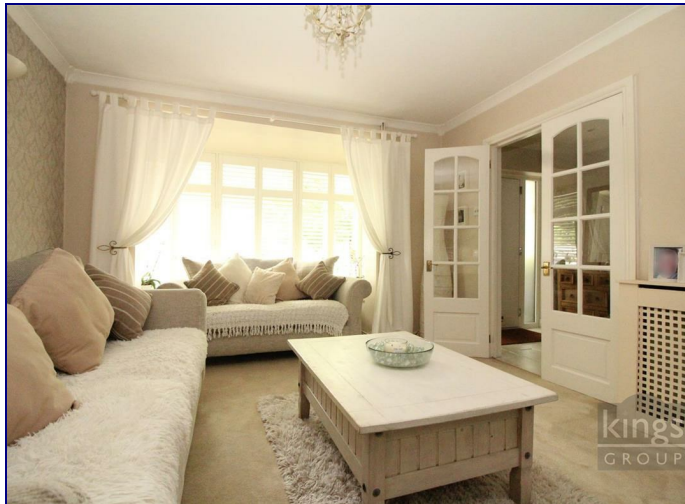
www.kings-group.net

19 Eastgate
Harlow CM20 1HP
Tel: 01279 433033

Great Brays, Harlow, CM18 6DP
Offers In The Region Of £380,000

Exclusive to Kings Group - THREE BEDROOM mid terraced house for sale located in a quiet, family orientated cul de sac with ample street parking in Great Brays. The property is just a 25 minute walk or 7 minute drive to Harlow Town Centre where you will find a range of high street shops, variety of popular restaurants, 24-hour supermarket, cinema and choice of affordable gyms. The property is also less than 10 minute drive to the M11 making it ideal for any commuters, a 13 minute walk to Passmores Academy and a 7 minute walk to Purfurd Green Primary School, perfect for young families. The property comprises large entrance hall, lounge, brand new fully fitted kitchen, dining room/sitting room, three DOUBLE bedrooms, first floor family bathroom, en suite to master and good sized low maintenance rear garden. The property also benefits from new roof, new combi-boiler and new double glazed windows throughout.

EXCLUSIVE OPEN DAY ~ Saturday 26th of June 2021 ~ Call us now to book your viewing



Entrance Hall

13'38 x 6'66 (3.96m x 1.83m)

Stairs to first floor landing, double glazed window to front aspect, under stairs storage cupboard, single radiator, tiled flooring, coved ceiling, smoke alarm

Lounge

11'68 x 15'59 (3.35m x 4.57m)

Double glazed window to front aspect, single radiator, carpeted flooring, phone point, TV aerial, power points, coved ceilings.

Kitchen

7'84 x 18'86 (2.13m x 5.49m)

Single radiator tiled flooring, flat top wall and base units, integrated cooker, electric oven and hob, extractor hood, integrated fridge freezer, washing machine, dishwasher, underfloor heating, coved ceiling, power points.

Dining Room / Sitting Room

17'03 x 10'61 (5.26m x 3.05m)

Double glazed window to rear aspect, single radiator, tiled flooring, spot lights, phone point, TV aerial, power points, underfloor heating, double glazed door leading to garden.

First Floor Landing

5'45 x 7'48 (1.52m x 2.13m)

Carpeted flooring, spot lights, coved ceiling, power points.

Bedroom One

12'13 x 14'28 (3.66m x 4.27m)

Window to front and rear aspect, single radiator, laminate flooring, built in storage cupboard, spot lights, TV aerial, power points.

En-Suite

5'34 x 5'45 (1.52m x 1.52m)

Double glazed window to rear aspect, tiled flooring, shower cubicle, vanity unit under sink with mixer tap, low level W.C tiled splash backs, spot lights.

Bedroom Two

10'08 x 14'67 (3.25m x 4.27m)

Double glazed window to front aspect, single radiator, carpeted flooring, built in storage cupboard, TV aerial, power points, coved ceilings.

Bedroom Three

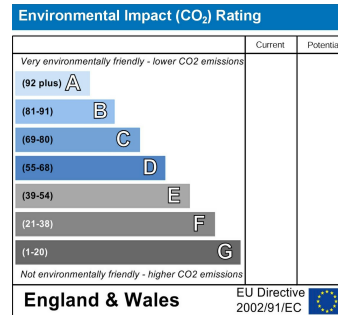
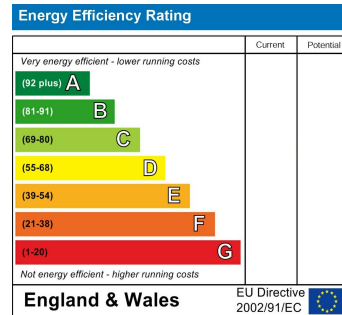
8'10 x 11'26 (2.69m x 3.35m)

Double glazed window to rear aspect, single radiator, laminate flooring, built in storage cupboard, TV aerial, power points, spot lights.

Family Bathroom

7'36 x 5'46 (2.13m x 1.52m)

Double glazed window to rear aspect, heated towel rail, tiled flooring, enclosed bath with mixer tap, vanity unit under sink, low level W.C, tiled walls spot lights.





kings
GROUP

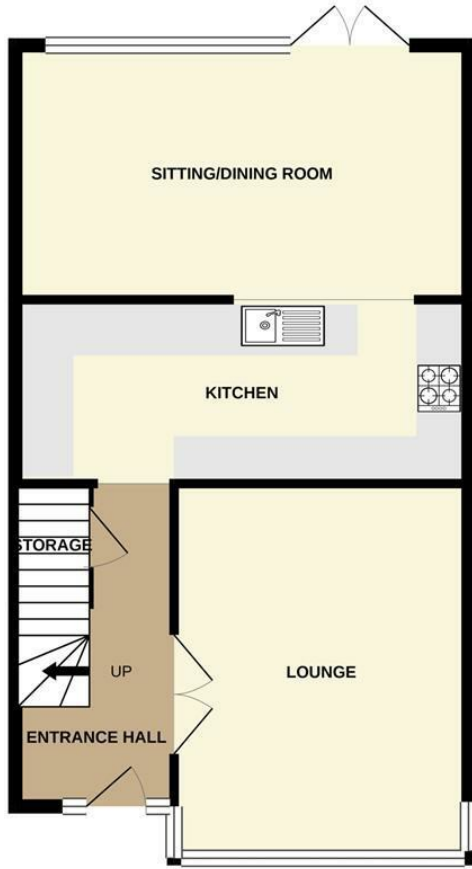
kings
GROUP

kings
GROUP

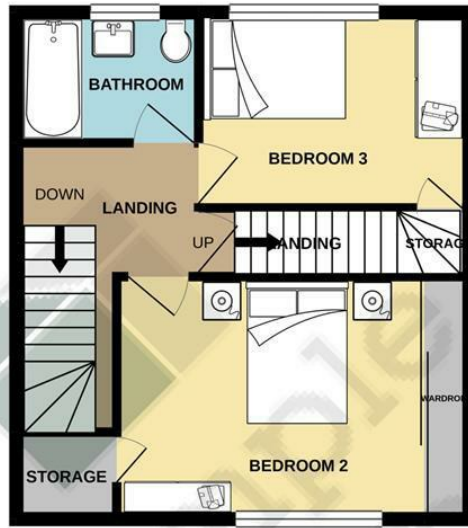
kings
GROUP



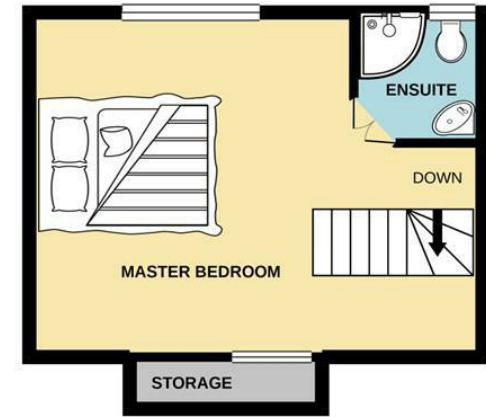
GROUND FLOOR
57.3 sq.m. (616 sq.ft.) approx.



1ST FLOOR
36.5 sq.m. (393 sq.ft.) approx.



2ND FLOOR
26.4 sq.m. (284 sq.ft.) approx.



TOTAL FLOOR AREA : 120.2 sq.m. (1294 sq.ft.) approx.

Whilst every attempt has been made to ensure the accuracy of the floorplan contained here, measurements of doors, windows, rooms and any other items are approximate and no responsibility is taken for any error, omission or mis-statement. This plan is for illustrative purposes only and should be used as such by any prospective purchaser. The services, systems and appliances shown have not been tested and no guarantee as to their operability or efficiency can be given.
Made with Metropix ©2021



Associated Offices in London, Essex and Hertfordshire
Kings Head Office Tudor Lodge, Burton Lane, Goffs Oak, Hertfordshire EN7 6SY Tel: 01707-872000

