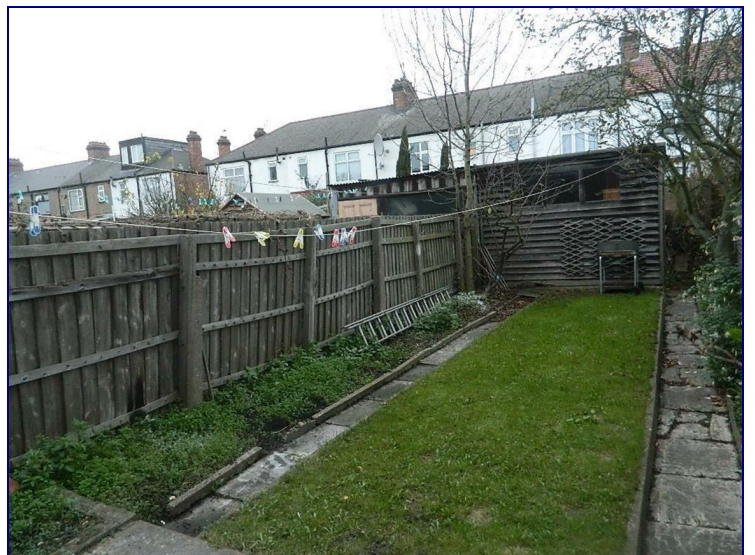
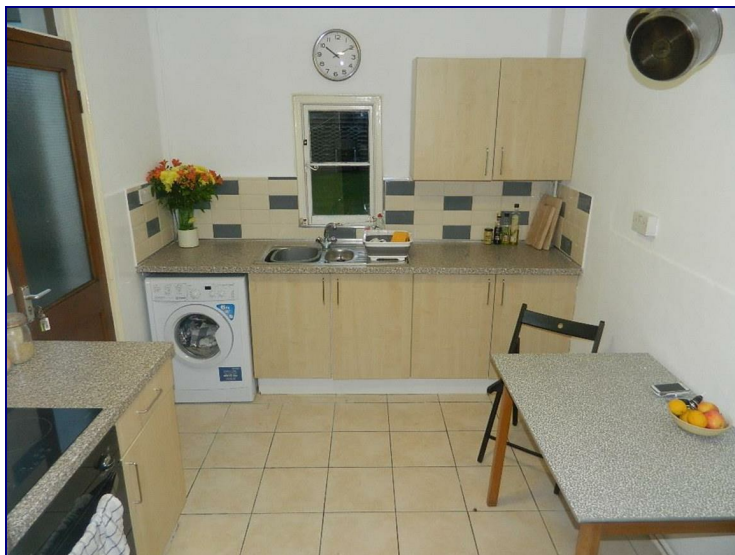


**Hawthorne Road, London, N18 1EZ**



**£1,600 PCM**

**\*\*\*WELL PRESENTED 2 BEDROOM HOUSE WITH 2 RECEPTIONS\*\*\*** This property boasts 2 double bedrooms, two good size reception rooms, modern fitted kitchen and a new 3-piece bathroom suite. Occupants would benefit from a PRIVATE GARDEN, gas central heating and double glazed windows. Located within walking distance to Silver Street Station and White Hart Lane Station. Awaiting EPC rating. £1600pcm.



Energy Efficiency Rating		
	Current	Potential
Very energy efficient - lower running costs		
(92 plus) <b>A</b>		
(81-91) <b>B</b>		
(69-80) <b>C</b>		
(55-68) <b>D</b>		
(39-54) <b>E</b>		
(21-38) <b>F</b>		
(1-20) <b>G</b>		
Not energy efficient - higher running costs		
<b>England &amp; Wales</b>	EU Directive 2002/91/EC	

Environmental Impact (CO <sub>2</sub> ) Rating		
	Current	Potential
Very environmentally friendly - lower CO <sub>2</sub> emissions		
(92 plus) <b>A</b>		
(81-91) <b>B</b>		
(69-80) <b>C</b>		
(55-68) <b>D</b>		
(39-54) <b>E</b>		
(21-38) <b>F</b>		
(1-20) <b>G</b>		
Not environmentally friendly - higher CO <sub>2</sub> emissions		
<b>England &amp; Wales</b>	EU Directive 2002/91/EC	

