



Edencroft, Highworth, SN6 7NJ

£240,000  
(Subject to Contract)

*Hanley's*

# Edencroft Highworth Swindon SN6 7NJ

A three bedroom terraced house situated in a popular residential area. The spacious accommodation comprises: To the ground floor; entrance hall, dual aspect kitchen/dining room with patio doors opening to the rear garden, living room and cloakroom. To the first floor are three bedrooms and a refitted bathroom with 'rainfall' shower over the bath. Outside to the rear is an enclosed southerly facing garden with patio area and steps up to a further patio, garden laid to lawn and brick built store. To the front is a driveway and garden laid to lawn which could be paved to provide additional parking if required. The property further benefits from night storage heating, double glazing and is offered for sale with no onward chain.



**1 Bathroom**



**3 Bedrooms**



**1 Reception**

**EPC: E 54**

**Council Tax Band: C**

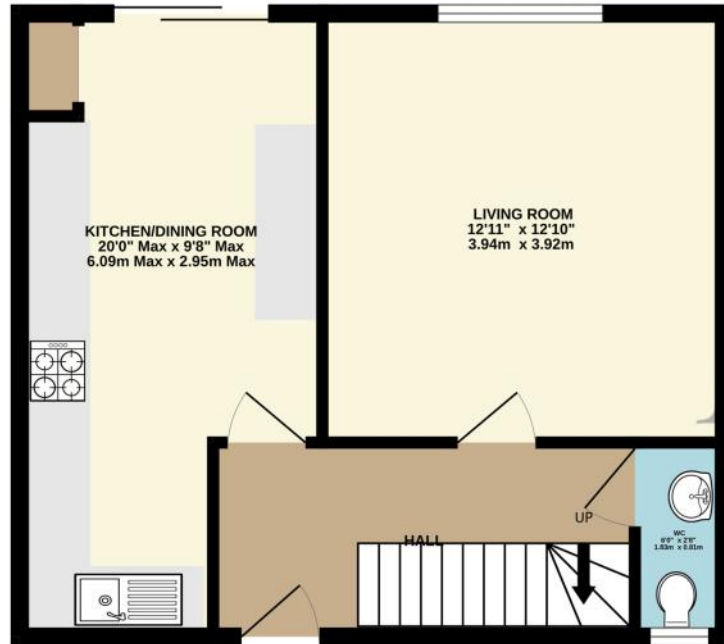
**Tenure: Freehold**



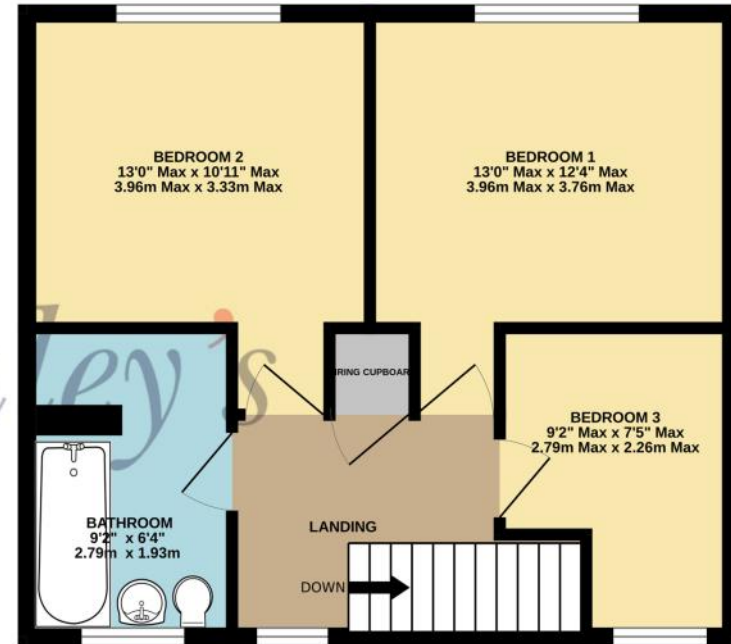
**DISCLAIMER.** These particulars, whilst believed to be accurate are set out as a general outline for guidance and do not constitute any part of an offer or contract. Intending purchasers should not rely on them as statements or representation of fact, but must satisfy themselves by inspection or otherwise as to their accuracy. No person in this firm's employment has the authority to make or give any representation or warranty in respect of the property. Floor plan measurements and distances are approximate only. We have not carried out a detailed survey nor tested the services, appliances or specific fittings. Your home is at risk if you do not keep up repayments on a mortgage or other loan secured on it.



GROUND FLOOR  
451 sq.ft. (41.9 sq.m.) approx.



1ST FLOOR  
448 sq.ft. (41.6 sq.m.) approx.



TOTAL FLOOR AREA : 898 sq.ft. (83.5 sq.m.) approx.

Whilst every attempt has been made to ensure the accuracy of the floorplan contained here, measurements of doors, windows, rooms and any other items are approximate and no responsibility is taken for any error, omission or mis-statement. This plan is for illustrative purposes only and should be used as such by any prospective purchaser. The services, systems and appliances shown have not been tested and no guarantee as to their operability or efficiency can be given.  
Made with Metropix ©2024

