



Home Farm, Highworth, Swindon, SN6 7EH

£250,000
(Subject to Contract)

Hanley's

Home Farm Highworth SN6 7EH

An extended and spacious three bedroom mid terrace property situated in a popular location within a short walk of local amenities and schools. The versatile accommodation comprises: Entrance hall with understairs storage cupboard, cloakroom with W.C and built-in cupboard, living room with fitted gas fire, separate dining room, fitted kitchen/breakfast room with built-in oven and gas hob with extractor fan over, door to the rear garden. To the first floor: landing with built-in storage cupboard, bathroom with shower over the bath, three bedrooms; two with fitted storage/wardrobe. Outside to the front is an open aspect overlooking a green area, the garden being laid to lawn with path to the front door. To the rear the garden is enclosed, mainly laid to lawn with gated access to the rear. The property further benefits from gas fired radiator central heating and double glazing. NO ONWARD CHAIN.



1 Bathroom



3 Bedrooms



2 Receptions

EPC: D 56

Council Tax Band: B

Tenure: Freehold

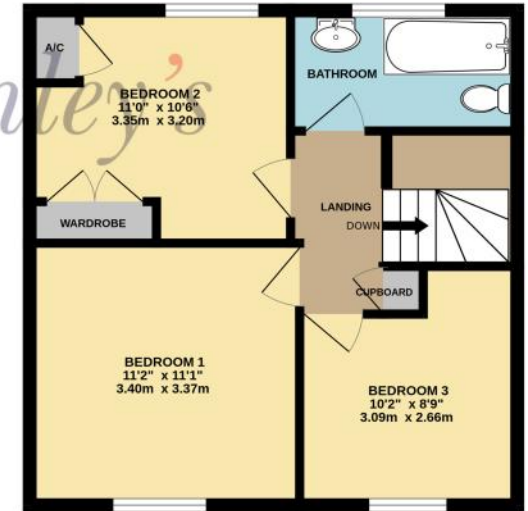


DISCLAIMER. These particulars, whilst believed to be accurate are set out as a general outline for guidance and do not constitute any part of an offer or contract. Intending purchasers should not rely on them as statements or representation of fact, but must satisfy themselves by inspection or otherwise as to their accuracy. No person in this firm's employment has the authority to make or give any representation or warranty in respect of the property. Floor plan measurements and distances are approximate only. We have not carried out a detailed survey nor tested the services, appliances or specific fittings. Your home is at risk if you do not keep up repayments on a mortgage or other loan secured on it.



GROUND FLOOR
633 sq.ft. (58.8 sq.m.) approx.

1ST FLOOR
436 sq.ft. (40.5 sq.m.) approx.



TOTAL FLOOR AREA : 1068 sq.ft. (99.3 sq.m.) approx.

Whilst every attempt has been made to ensure the accuracy of the floorplan contained here, measurements of doors, windows, rooms and any other items are approximate and no responsibility is taken for any error, omission or mis-statement. This plan is for illustrative purposes only and should be used as such by any prospective purchaser. The services, systems and appliances shown have not been tested and no guarantee as to their operability or efficiency can be given.
Made with Metropix ©2026

Hanley's Estate Agents
25 High Street, Highworth, SN6 7AG
Tel: 01793 762005 mail@hanleys.co.uk

