



Pentylands Close, Highworth, Swindon, SN6 7JY

£679,950
(Subject to Contract)

Hanley's

Pentylands Close, Highworth

An individually designed four-bedroom detached property offering generously proportioned accommodation throughout. The ground floor features a spacious reception hall with staircase to the first floor, a well-appointed living room with solid wood flooring and a stone feature fireplace, a separate dining room also with wooden flooring, a cosy snug and a fully fitted kitchen with central island, integrated appliances, walk-in larder and double doors opening onto the rear garden. Additional ground floor amenities include a large study with W.C, and internal access to the attached garage. Upstairs, the main bedroom benefits from an en-suite shower room and a dedicated dressing room. There are three further bedrooms, each with fitted wardrobes, a first-floor utility room, and a substantial family bathroom complete with corner bath and separate shower cubicle. The property is equipped with gas radiator central heating and double glazing. Externally, there is an electric charging point and a block-paved driveway provides ample parking for multiple vehicles leading to the attached garage with power and light currently fitted out as a library capable of holding approximately 3000 books with underfloor heating and personal access door opening onto a rear yard with double gates and metal garden shed. Attractive gardens mainly laid to lawn wrap around the rear and side elevations with a large patio area, selection of mature trees and bushes and a thatched-roof wooden gazebo.



2 Bathrooms



4 Bedrooms



4 Receptions

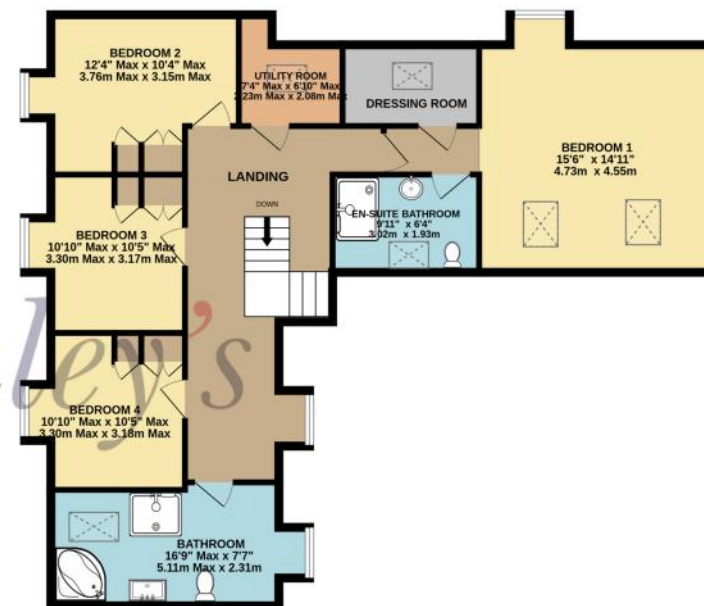
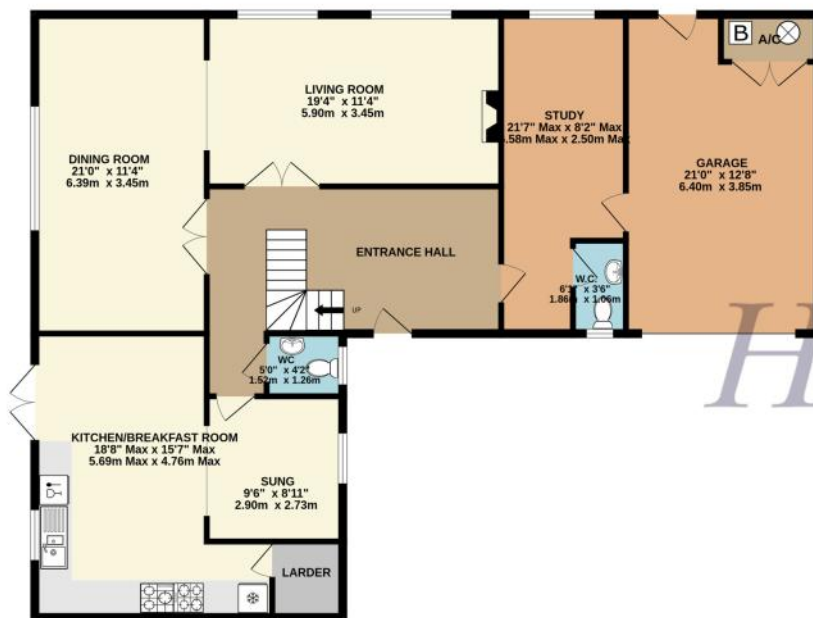
EPC: C 76

Council Tax Band: Di

Tenure: Freehold



DISCLAIMER. These particulars, whilst believed to be accurate are set out as a general outline for guidance and do not constitute any part of an offer or contract. Intending purchasers should not rely on them as statements or representation of fact, but must satisfy themselves by inspection or otherwise as to their accuracy. No person in this firm's employment has the authority to make or give any representation or warranty in respect of the property. Floor plan measurements and distances are approximate only. We have not carried out a detailed survey nor tested the services, appliances or specific fittings. Your home is at risk if you do not keep up repayments on a mortgage or other loan secured on it.



TOTAL FLOOR AREA : 2518 sq.ft. (233.9 sq.m.) approx.

Whilst every attempt has been made to ensure the accuracy of the floorplan contained here, measurements of doors, windows, rooms and any other items are approximate and no responsibility is taken for any error, omission or mis-statement. This plan is for illustrative purposes only and should be used as such by any prospective purchaser. The services, systems and appliances shown have not been tested and no guarantee as to their operability or efficiency can be given.

Made with Metropix ©2025



Hanley's Estate Agents
25 High Street, Highworth, SN6 7AG
Tel: 01793 762005 mail@hanleys.co.uk

