



Henley Drive, Highworth, SN6 7JU

£350,000  
(Subject to Contract)

*Hanley's*



## Henley Drive Highworth SN6 7JU

An extended four bedroom semi-detached property which has been tastefully updated by the current owners. The well presented accommodation comprises: Entrance hall, ground floor bathroom, living room with fireplace, dining room opening to the kitchen/breakfast room with built-in dishwasher, fridge, oven and hob with extractor fan over, breakfast bar and door opening to the conservatory with French doors to the rear garden and door to the utility room. To the first floor: landing: airing cupboard housing gas fired boiler, Cloakroom with W.C and wash basin, four bedrooms; three with fitted wardrobes and fitted shower to bedroom one. The property further benefits from gas radiator central heating and double glazing. Outside to the front is a block paved driveway providing parking for several vehicles with car port and access to the utility room. To the rear is an attractive enclosed garden laid to lawn with a selection of established flower, shrub and tree borders with attractive pathway to a gravelled seating area and further decking area.



**1 Bathroom**



**4 Bedrooms**



**2 Receptions**

**EPC: C70**

**Council Tax Band: D**

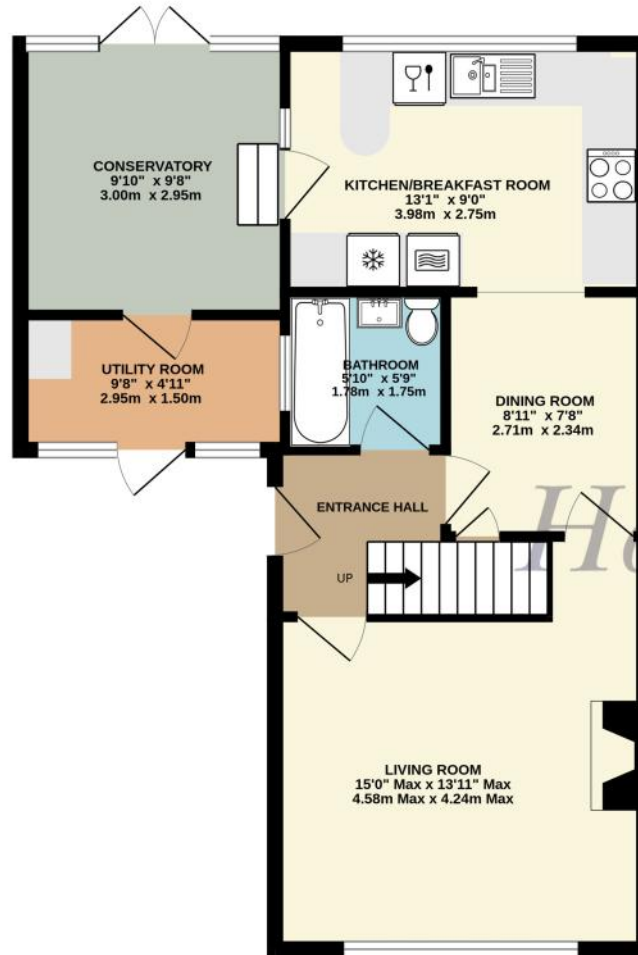
**Tenure: Freehold**



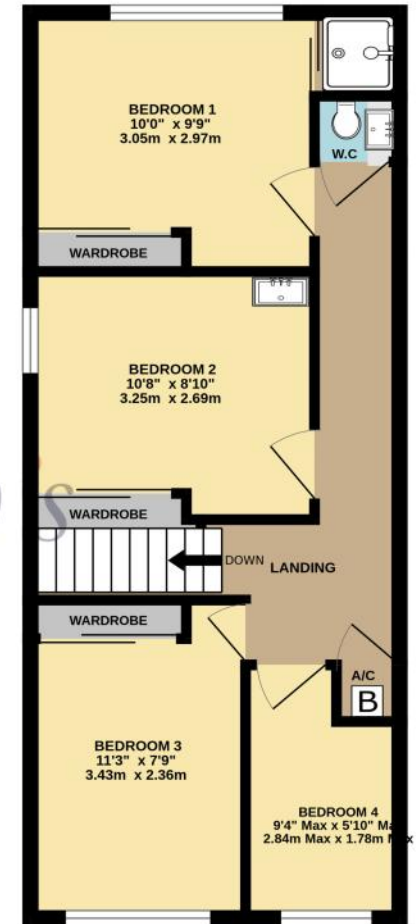
**DISCLAIMER.** These particulars, whilst believed to be accurate are set out as a general outline for guidance and do not constitute any part of an offer or contract. Intending purchasers should not rely on them as statements or representation of fact, but must satisfy themselves by inspection or otherwise as to their accuracy. No person in this firm's employment has the authority to make or give any representation or warranty in respect of the property. Floor plan measurements and distances are approximate only. We have not carried out a detailed survey nor tested the services, appliances or specific fittings. Your home is at risk if you do not keep up repayments on a mortgage or other loan secured on it.



GROUND FLOOR  
573 sq.ft. (53.2 sq.m.) approx.



1ST FLOOR  
442 sq.ft. (41.1 sq.m.) approx.



TOTAL FLOOR AREA : 1015 sq.ft. (94.3 sq.m.) approx.

Whilst every attempt has been made to ensure the accuracy of the floorplan contained here, measurements of doors, windows, rooms and any other items are approximate and no responsibility is taken for any error, omission or mis-statement. This plan is for illustrative purposes only and should be used as such by any prospective purchaser. The services, systems and appliances shown have not been tested and no guarantee as to their operability or efficiency can be given.  
Made with Metropix ©2025



