



Colton Road, Shrivenham, Swindon, SN6 8AZ

£675,000
(Subject to Contract)

Hanley's

Colton Road Shrivenham SN6 8AZ

An imposing five bedroom detached house set over three floors which is situated in a sought after location a short walk from the High Street of this popular village. The spacious accommodation comprises: entrance hall, living room, dining room with square bay window, study with storage cupboard, ground floor W.C, superb kitchen/dining room with an extensive range of fitted units with breakfast bar, integrated fridge, freezer, five ring gas hob with extractor over, double oven and dishwasher, French doors open on to the garden, utility room with a personal door to the garage and door to the side. To the first floor: spacious landing with stairs to the second floor, airing cupboard, bedroom one with fitted wardrobes and door to the en-suite bathroom with a bath and separate shower cubicle, three further bedrooms; one with fitted wardrobe and family bathroom with bath and separate shower cubicle. To the second floor: bedroom five which has built-in eaves storage. Outside to the rear the enclosed garden is mainly laid to lawn with paved patio area, selection of shrubs and gated side access. To the front: driveway parking for two vehicles, lawn with shrubs and gated access to the rear. Further benefits include gas radiator central heating and double glazing.



2 Bathrooms



5 Bedrooms



3 Receptions

EPC: C 79

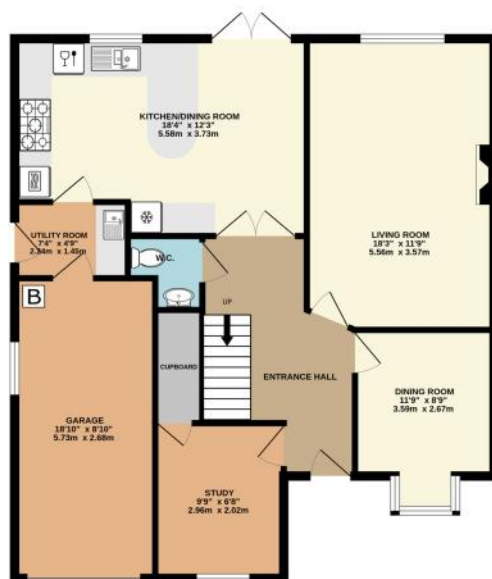
Council Tax Band: F

Tenure: Freehold



DISCLAIMER. These particulars, whilst believed to be accurate are set out as a general outline for guidance and do not constitute any part of an offer or contract. Intending purchasers should not rely on them as statements or representation of fact, but must satisfy themselves by inspection or otherwise as to their accuracy. No person in this firm's employment has the authority to make or give any representation or warranty in respect of the property. Floor plan measurements and distances are approximate only. We have not carried out a detailed survey nor tested the services, appliances or specific fittings. Your home is at risk if you do not keep up repayments on a mortgage or other loan secured on it.

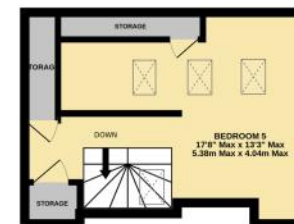
GROUND FLOOR
936 sq.ft. (86.9 sq.m.) approx.



1ST FLOOR
770 sq.ft. (71.5 sq.m.) approx.



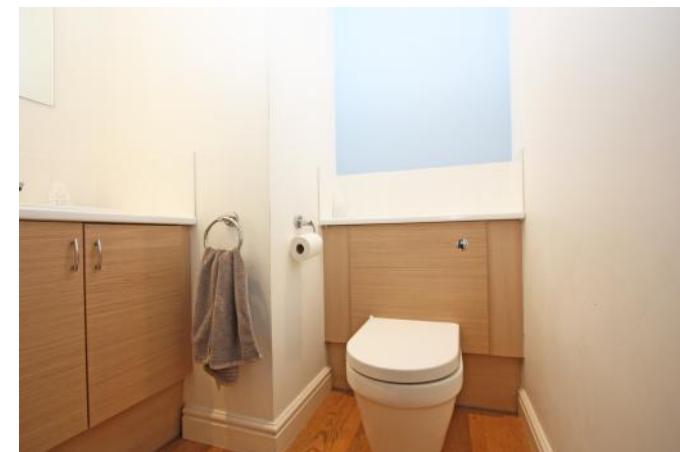
2ND FLOOR
220 sq.ft. (20.5 sq.m.) approx.



TOTAL FLOOR AREA : 1926 sq.ft. (178.9 sq.m.) approx.

Whilst every attempt has been made to ensure the accuracy of the floorplan contained here, measurements of doors, windows, rooms and any other items are approximate and no responsibility is taken for any error, omission or mis-statement. This plan is for illustrative purposes only and should be used as such by any prospective purchaser. The services, systems and appliances shown have not been tested and no guarantee as to their operability or efficiency can be given.

Made with Metropix ©2025



Hanley's Estate Agents
25 High Street, Highworth, SN6 7AG
Tel: 01793 762005 mail@hanleys.co.uk

