



Cozens Grove, Shrivenham, SN6 8FS

£550,000  
(Offers in Excess of)

*Hanley's*



## Cozens Grove Shrivenham SN6 8FS

A beautifully presented five bedroom detached house offering spacious and stylishly appointed accommodation having had many additional up-upgrades when originally built. The accommodation comprises: entrance hall, living room with bi-fold doors opening to the patio with pagoda providing a covered seating area, superb kitchen/dining room with bi-fold doors opening on to the patio area, an extensive range of fitted units with integrated double oven, fridge, freezer, dishwasher and five ring gas hob with extractor fan over, utility room with W.C, study with bay window and dining room/playroom with bay window. To the first floor: spacious landing with airing cupboard, two bedrooms with en-suite shower rooms and fitted wardrobes and three further double bedrooms; two having fitted wardrobes, family bathroom with bath and separate shower cubicle. Outside to the rear is an enclosed garden which is mainly laid to lawn with paved patio area and attractive covered pagoda. Gated side access leads to the front which has been attractively landscaped, driveway parking with electric charging point leads to the single garage. The property further benefits from gas radiator central heating, double glazing and the remainder of the NHBC certificate.



**3 Bathrooms**



**5 Bedrooms**



**3 Receptions**

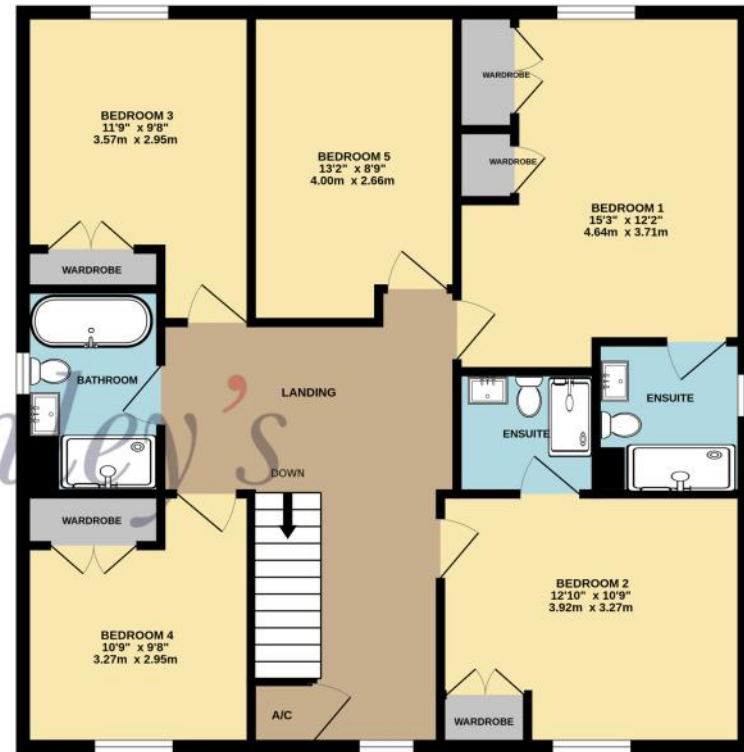
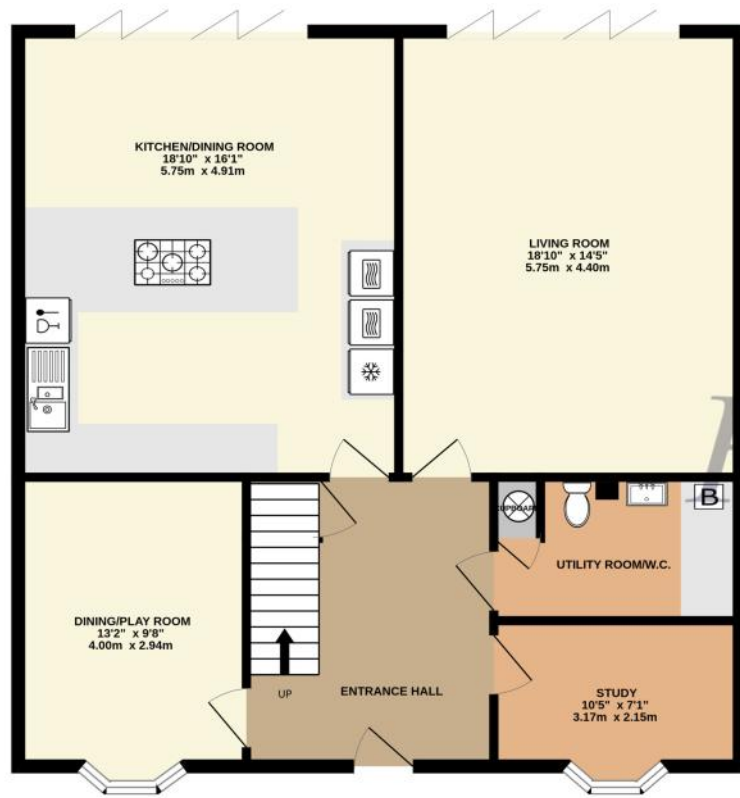
**EPC: B 87**

**Council Tax Band: F**

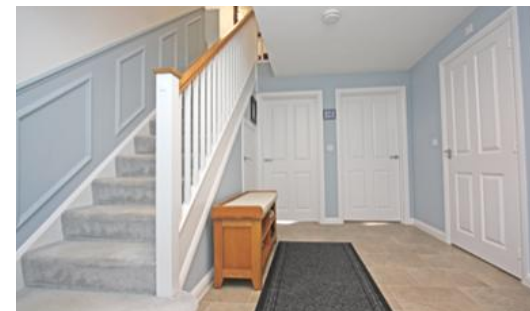
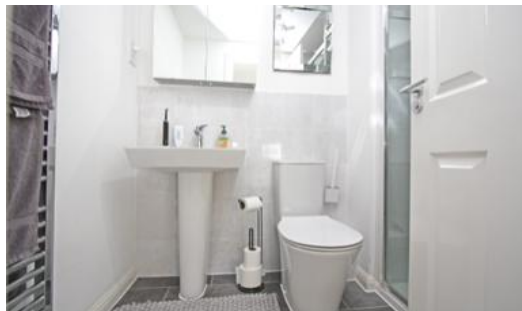
**Tenure: Freehold**



**DISCLAIMER.** These particulars, whilst believed to be accurate are set out as a general outline for guidance and do not constitute any part of an offer or contract. Intending purchasers should not rely on them as statements or representation of fact, but must satisfy themselves by inspection or otherwise as to their accuracy. No person in this firm's employment has the authority to make or give any representation or warranty in respect of the property. Floor plan measurements and distances are approximate only. We have not carried out a detailed survey nor tested the services, appliances or specific fittings. Your home is at risk if you do not keep up repayments on a mortgage or other loan secured on it.



TOTAL FLOOR AREA : 1901 sq.ft. (176.6 sq.m.) approx.



Hanley's Estate Agents  
25 High Street, Highworth, SN6 7AG  
Tel: 01793 762005 mail@hanleys.co.uk







