



Squires Court, Highworth, SN6 7FH

£415,000
(Subject to Contract)

Hanley's

Squires Court Highworth SN6 7FH

Situated in one of the most sought-after locations in Highworth just a short level walk from the High Street and Market Place, this attractive three bedroom semi-detached property is set within a small select courtyard development exclusively for the over 60's. The property has been built to a high specification throughout with the accommodation comprising: Entrance hall with storage cupboard and stair lift to the first floor, ground floor shower room/cloakroom, living room with double doors opening to the dining room and conservatory with double glazed doors to the rear garden. Fully fitted kitchen with built-in appliances, three bedrooms; two with built-in double wardrobes and re-fitted shower room. Further benefits include double glazing and gas radiator central heating. Outside the property has a landscaped garden to the rear with gated side access and an allocated parking space to the front. The development also benefits from attractive communal walled gardens. The property is offered for sale with no onward chain.

There is a service charge of £598.50 per quarter, which includes ground rent.



2 Shower Rooms



3 Bedrooms



2 Receptions

EPC: C 78

Council Tax Band: D

Tenure: Freehold

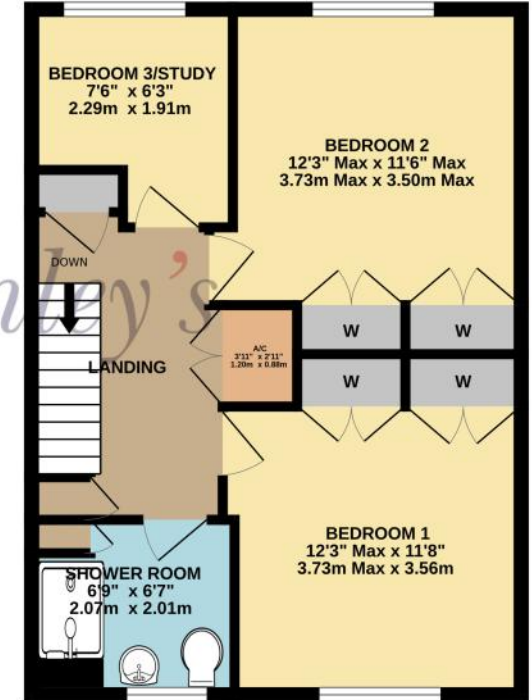
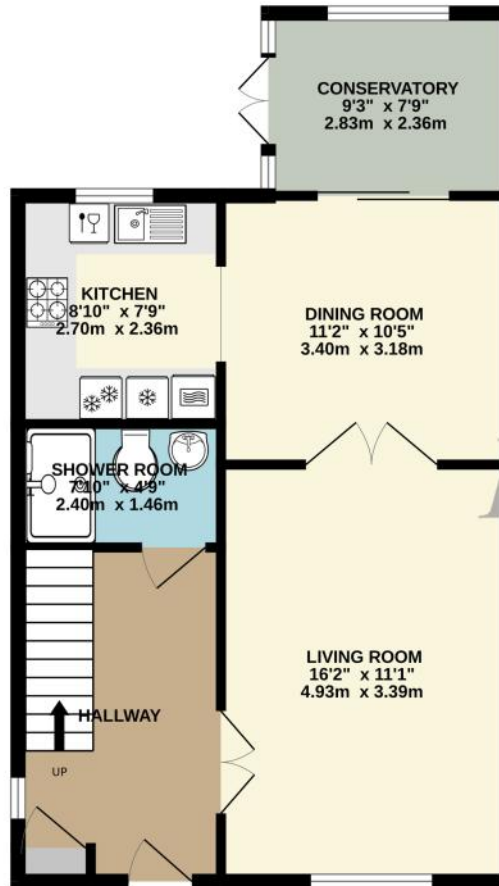


DISCLAIMER. These particulars, whilst believed to be accurate are set out as a general outline for guidance and do not constitute any part of an offer or contract. Intending purchasers should not rely on them as statements or representation of fact, but must satisfy themselves by inspection or otherwise as to their accuracy. No person in this firm's employment has the authority to make or give any representation or warranty in respect of the property. Floor plan measurements and distances are approximate only. We have not carried out a detailed survey nor tested the services, appliances or specific fittings. Your home is at risk if you do not keep up repayments on a mortgage or other loan secured on it.



GROUND FLOOR
571 sq.ft. (53.1 sq.m.) approx.

1ST FLOOR
503 sq.ft. (46.7 sq.m.) approx.



TOTAL FLOOR AREA : 1074 sq.ft. (99.8 sq.m.) approx.

Whilst every attempt has been made to ensure the accuracy of the floorplan contained here, measurements of doors, windows, rooms and any other items are approximate and no responsibility is taken for any error, omission or mis-statement. This plan is for illustrative purposes only and should be used as such by any prospective purchaser. The services, systems and appliances shown have not been tested and no guarantee as to their operability or efficiency can be given.
Made with Metropix ©2025

