



Godolphin Close, Freshbrook, Swindon, SN5 8RW

£225,000
(Subject to Contract)

Hanley's

Godolphin Close Freshbrook Swindon SN5 8RW

A three bedroom mid terrace property situated in a popular location close to local amenities including shops and schools, Lydiard Country Park and Junction 16 of the M4 motorway affording good access to London and the South West. The accommodation comprises: Porch, entrance hall with storage cupboard, living room, kitchen/dining room with integrated double oven, hob with extractor fan over and French doors opening to the rear garden. To the first floor is a bathroom with shower over the bath and three bedrooms; bedroom one with fitted wardrobes. The property further benefits from gas radiator central heating and double glazing. Outside to the front is a small low maintenance garden and to the rear an established garden with area laid to lawn with attractive flower and shrub borders, patio area and gated access to the rear. The property is offered for sale with no onward chain.



1 Bathroom



3 Bedrooms



2 Receptions

EPC: C 69

Council Tax Band: B

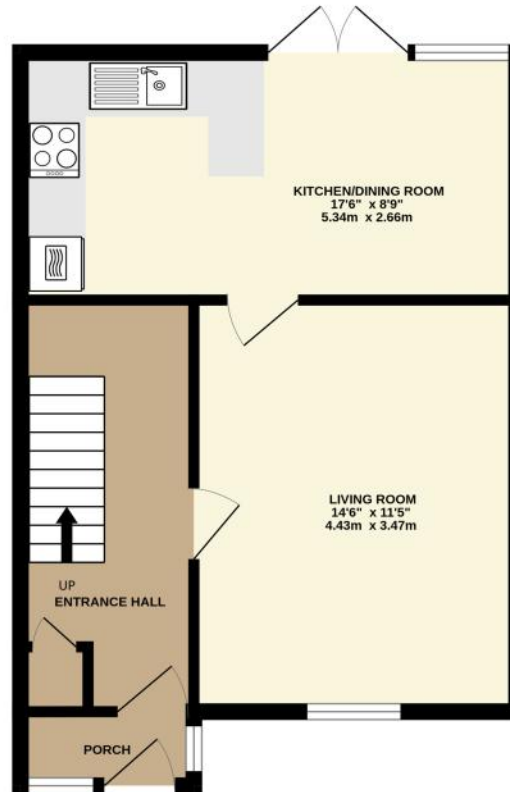
Tenure: Freehold



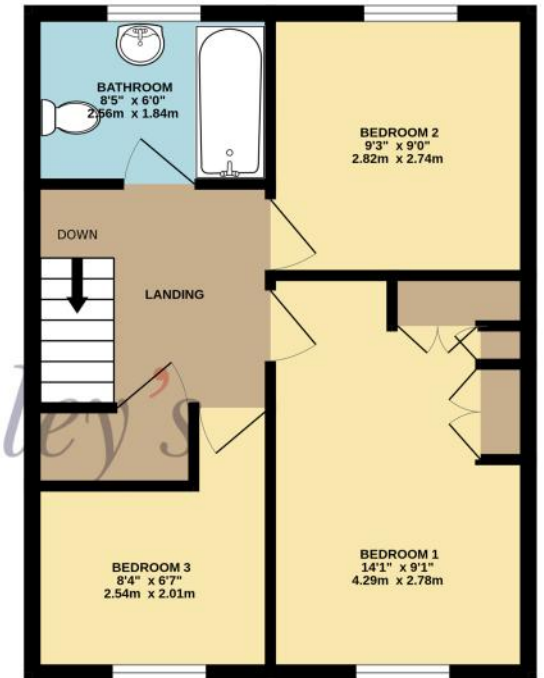
DISCLAIMER. These particulars, whilst believed to be accurate are set out as a general outline for guidance and do not constitute any part of an offer or contract. Intending purchasers should not rely on them as statements or representation of fact, but must satisfy themselves by inspection or otherwise as to their accuracy. No person in this firm's employment has the authority to make or give any representation or warranty in respect of the property. Floor plan measurements and distances are approximate only. We have not carried out a detailed survey nor tested the services, appliances or specific fittings. Your home is at risk if you do not keep up repayments on a mortgage or other loan secured on it.



GROUND FLOOR
424 sq.ft. (39.3 sq.m.) approx.



1ST FLOOR
408 sq.ft. (37.9 sq.m.) approx.



TOTAL FLOOR AREA : 831 sq.ft. (77.2 sq.m.) approx.

Whilst every attempt has been made to ensure the accuracy of the floorplan contained here, measurements of doors, windows, rooms and any other items are approximate and no responsibility is taken for any error, omission or mis-statement. This plan is for illustrative purposes only and should be used as such by any prospective purchaser. The services, systems and appliances shown have not been tested and no guarantee as to their operability or efficiency can be given.
Made with Metropix ©2025