



Edencroft, Highworth, Swindon, SN6 7NH

£175,000
(Subject to Contract)

Hanley's

Edencroft Highworth Swindon SN6 7NH

A two bedroom first floor apartment situated on the edge of Highworth. The spacious and well presented accommodation comprises: Private entrance with stairs to the first floor, hall with doors off to all rooms, living room with rural views to the front, fitted kitchen/dining room with built in oven and hob, study, two double bedrooms and bathroom with shower over the bath. The property also benefits from double glazing and is offered for sale with NO ONWARD CHAIN.

Leasehold: 125 years from 1 November 1981.



1 Bathroom



2 Bedrooms



2 Receptions

EPC: 34F

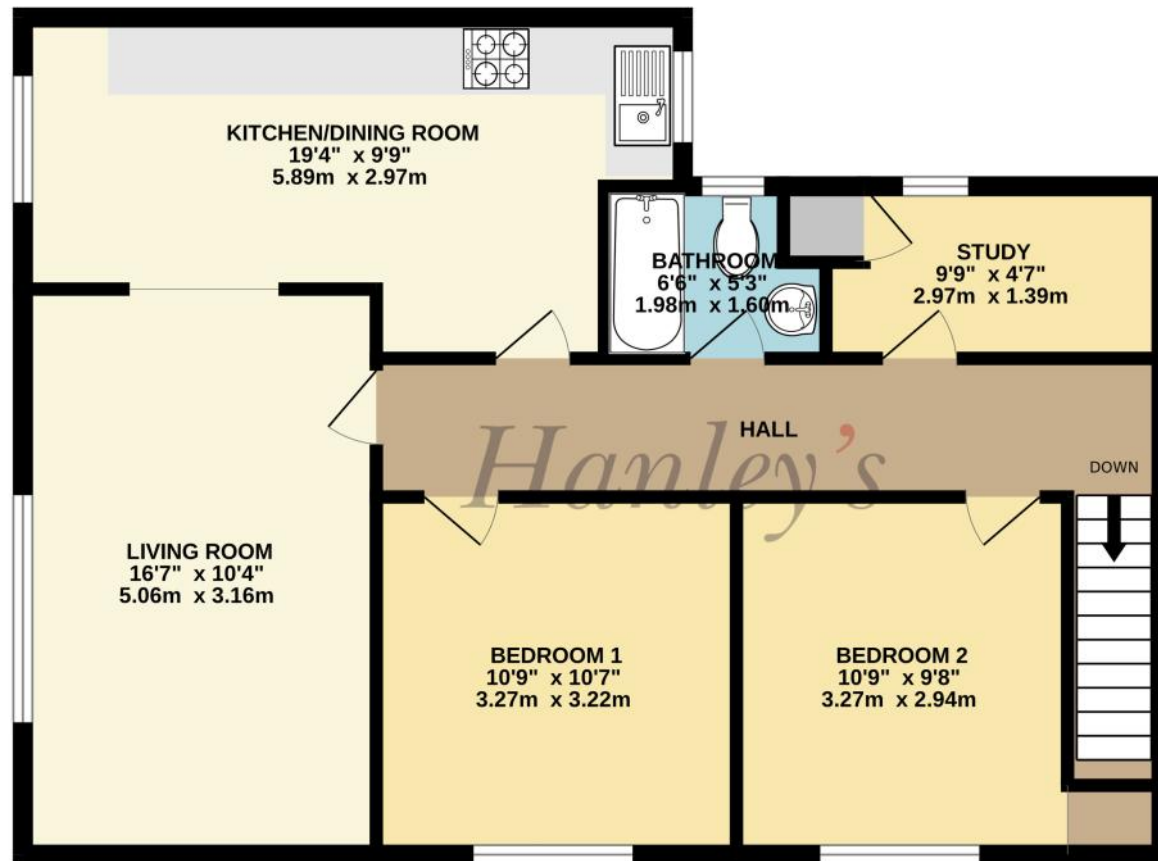
Council Tax Band: B

Tenure: Leasehold



DISCLAIMER. These particulars, whilst believed to be accurate are set out as a general outline for guidance and do not constitute any part of an offer or contract. Intending purchasers should not rely on them as statements or representation of fact, but must satisfy themselves by inspection or otherwise as to their accuracy. No person in this firm's employment has the authority to make or give any representation or warranty in respect of the property. Floor plan measurements and distances are approximate only. We have not carried out a detailed survey nor tested the services, appliances or specific fittings. Your home is at risk if you do not keep up repayments on a mortgage or other loan secured on it.

FIRST FLOOR
751 sq.ft. (69.8 sq.m.) approx.



TOTAL FLOOR AREA : 751 sq.ft. (69.8 sq.m.) approx.

Whilst every attempt has been made to ensure the accuracy of the floorplan contained here, measurements of doors, windows, rooms and any other items are approximate and no responsibility is taken for any error, omission or mis-statement. This plan is for illustrative purposes only and should be used as such by any prospective purchaser. The services, systems and appliances shown have not been tested and no guarantee as to their operability or efficiency can be given.
Made with Metropix 52025

Hanley's Estate Agents
25 High Street, Highworth, SN6 7AG
Tel: 01793 762005 mail@hanleys.co.uk

