



Cherry Orchard, Highworth, Swindon, SN6 7AU

£375,000
(Offers in Excess of)

Hanley's

Cherry Orchard Highworth SN6 7AU

An extended three bedroom bay fronted semi-detached house situated in a sought after location just short level walk to the High Street and Market Place. The property has been updated and improved in recent years and offers well presented accommodation comprising: entrance hall, large fitted kitchen/dining room with an extensive range of fitted units and central island with storage and breakfast bar, separate utility room with door to cloakroom. Living room with French doors opening onto the large rear garden. To the first floor are three bedrooms, re-fitted bathroom and access via ladder to the part boarded loft with a skylight window and light. Further benefits include gas fired radiator central heating and double glazing. Outside to the front is a gravelled driveway providing parking for several vehicles and gated side access leading to the large enclosed rear garden with patio area, artificial grass, two garden sheds and paved area to the rear of the garden with pergola and brick built Pizza oven.



1 Bathroom



3 Bedrooms



1 Reception

EPC: C 72

Council Tax Band: C

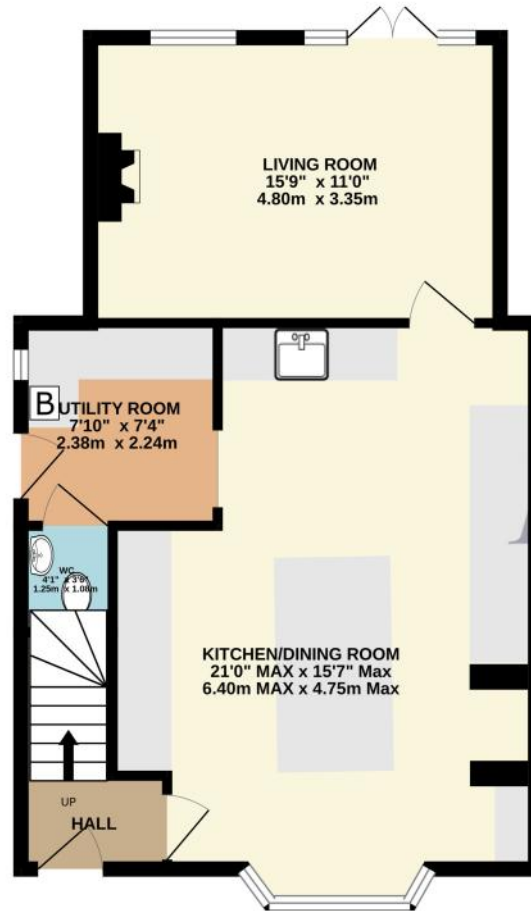
Tenure: Freehold



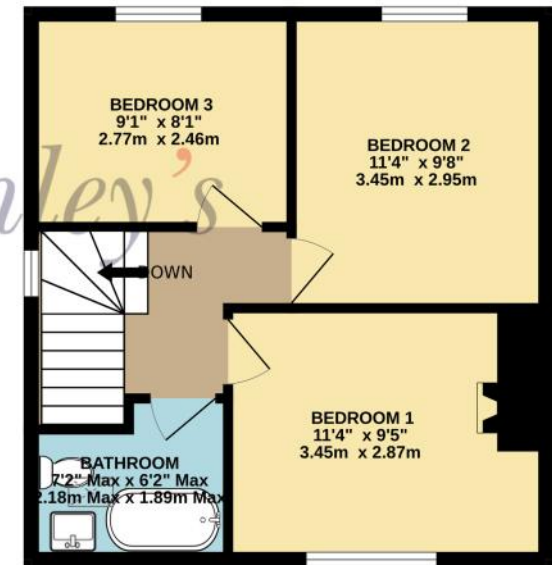
DISCLAIMER. These particulars, whilst believed to be accurate are set out as a general outline for guidance and do not constitute any part of an offer or contract. Intending purchasers should not rely on them as statements or representation of fact, but must satisfy themselves by inspection or otherwise as to their accuracy. No person in this firm's employment has the authority to make or give any representation or warranty in respect of the property. Floor plan measurements and distances are approximate only. We have not carried out a detailed survey nor tested the services, appliances or specific fittings. Your home is at risk if you do not keep up repayments on a mortgage or other loan secured on it.



GROUND FLOOR
589 sq.ft. (54.7 sq.m.) approx.



1ST FLOOR
406 sq.ft. (37.7 sq.m.) approx.



TOTAL FLOOR AREA : 995 sq.ft. (92.4 sq.m.) approx.

Whilst every attempt has been made to ensure the accuracy of the floorplan contained here, measurements of doors, windows, rooms and any other items are approximate and no responsibility is taken for any error, omission or mis-statement. This plan is for illustrative purposes only and should be used as such by any prospective purchaser. The services, systems and appliances shown have not been tested and no guarantee as to their operability or efficiency can be given.

Made with Metropix ©2025

Hanley's Estate Agents
25 High Street, Highworth, SN6 7AG
Tel: 01793 762005 mail@hanleys.co.uk

