



Sevenfields, Highworth, SN6 7NG

£350,000
(Offers in excess of)

Hanley's

Sevenfields Highworth, SN6 7NG

A well presented three bedroom link detached property with a large attractive garden to the rear. The property which has the potential to extend (subject to planning) offers tastefully updated accommodation comprising: Entrance porch, 'L' shaped living/dining room with patio doors opening onto the rear garden, modern fitted kitchen with built-in oven, hob, fridge, freezer and dishwasher, downstairs cloakroom/utility room, rear lobby with internal access to the single garage. To the first floor: landing with airing cupboard, stylish bathroom with heated towel rail and shower over the bath, two double bedrooms with fitted wardrobes and one single bedroom with fitted cupboard. The property also benefits from recently replaced gas radiator central heating boiler and recently fitted double glazed windows. Outside to the front is a block paved driveway leading to the attached single garage with power and light. To the rear the large garden is mainly laid to lawn with full width patio area, raised flower beds, selection of mature trees and bushes, water feature and bespoke timber breeze house.



1 Bathroom



3 Bedrooms



1 Reception

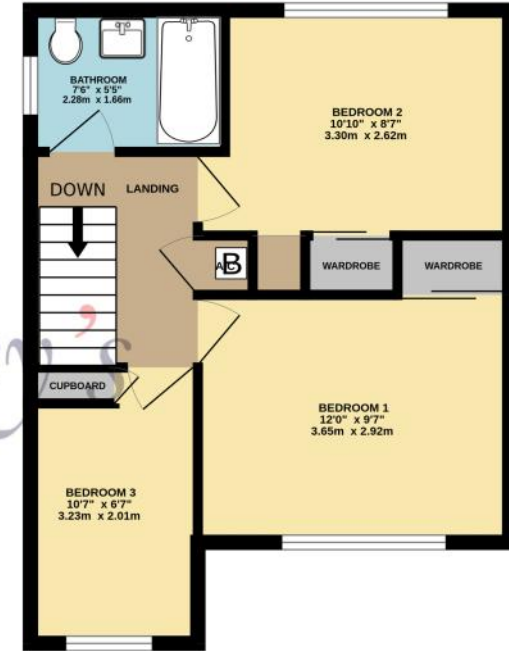
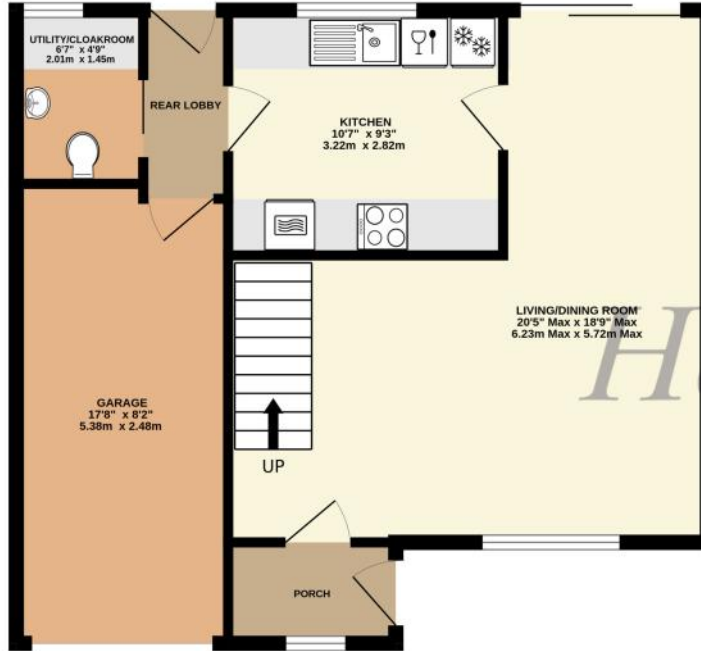
EPC: D67

Council Tax Band: D

Tenure: Freehold



DISCLAIMER. These particulars, whilst believed to be accurate are set out as a general outline for guidance and do not constitute any part of an offer or contract. Intending purchasers should not rely on them as statements or representation of fact, but must satisfy themselves by inspection or otherwise as to their accuracy. No person in this firm's employment has the authority to make or give any representation or warranty in respect of the property. Floor plan measurements and distances are approximate only. We have not carried out a detailed survey nor tested the services, appliances or specific fittings. Your home is at risk if you do not keep up repayments on a mortgage or other loan secured on it.



TOTAL FLOOR AREA : 1000 sq.ft. (92.9 sq.m.) approx.

Whilst every attempt has been made to ensure the accuracy of the floorplan contained here, measurements of doors, windows, rooms and any other items are approximate and no responsibility is taken for any error, omission or mis-statement. This plan is for illustrative purposes only and should be used as such by any prospective purchaser. The services, systems and appliances shown have not been tested and no guarantee as to their operability or efficiency can be given.
Made with Metropix ©2024

