



Windrush, Highworth, Swindon, SN6 7DZ

£240,000  
(Offers in excess of)

*Hanley's*



## Windrush Highworth SN6 7DZ

A well presented three bedroom terraced property situated on the edge of this popular development. The property has the benefit of a single garage located immediately to the rear with a personal access door from the garden. The accommodation comprises: porch, entrance hall, living room with arch to the dining area with sliding patio doors to the rear garden, fitted kitchen with fitted oven, fridge and washing machine, , bedroom one with fitted wardrobes, two further bedrooms and a bathroom with shower over the bath. Outside there is a well tended garden to the front which is mainly laid to lawn with path to the front door and to the rear the enclosed garden is laid to lawn with flower borders, an area is laid to stone chippings, gated rear access and a door to the garage. The property also benefits from gas radiator central heating and double glazing. The property is offered for sale with **NO ONWARD CHAIN**



**1 Bathroom**



**3 Bedrooms**



**1 Reception**

**EPC: D67**

**Council Tax Band: B**

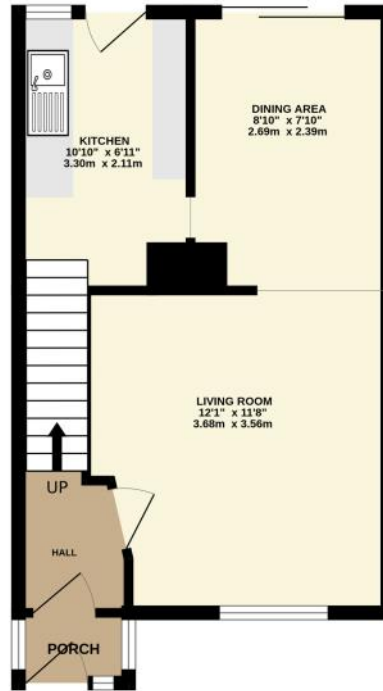
**Tenure: Freehold**



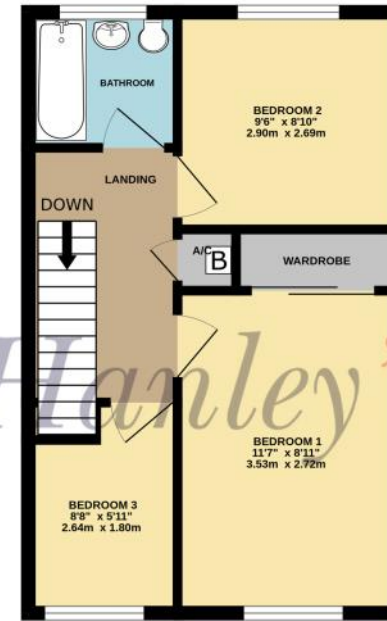
**DISCLAIMER.** These particulars, whilst believed to be accurate are set out as a general outline for guidance and do not constitute any part of an offer or contract. Intending purchasers should not rely on them as statements or representation of fact, but must satisfy themselves by inspection or otherwise as to their accuracy. No person in this firm's employment has the authority to make or give any representation or warranty in respect of the property. Floor plan measurements and distances are approximate only. We have not carried out a detailed survey nor tested the services, appliances or specific fittings. Your home is at risk if you do not keep up repayments on a mortgage or other loan secured on it.



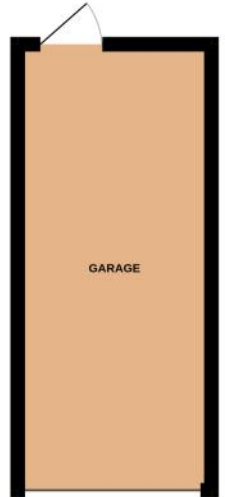
GROUND FLOOR  
366 sq.ft. (34.0 sq.m.) approx.



1ST FLOOR  
359 sq.ft. (33.3 sq.m.) approx.



140 sq.ft. (13.0 sq.m.) approx.



TOTAL FLOOR AREA : 865 sq.ft. (80.3 sq.m.) approx.

Whilst every attempt has been made to ensure the accuracy of the floorplan contained here, measurements of doors, windows, rooms and any other items are approximate and no responsibility is taken for any error, omission or mis-statement. This plan is for illustrative purposes only and should be used as such by any prospective purchaser. The services, systems and appliances shown have not been tested and no guarantee as to their operability or efficiency can be given.  
Made with Metropix ©2024



