



Bydemill Gardens, Highworth, Swindon, SN6 7BS

£395,000
(Subject to Contract)

Hanley's

Bydemill Gardens Highworth Swindon SN6 7BS

A spacious three bedroomed detached house with superb far reaching views to the rear and is situated in a sought after location, a short walk of the High Street. Presented in excellent order throughout the accommodation comprises: porch, entrance hall, cloakroom, living room with fireplace, separate dining room with French doors to the conservatory with a lovely open views and door to the garden, fitted kitchen with dual fuel 'Range' style cooker and door to the side. To the first floor: landing, three good sized bedrooms with built-in wardrobe/bedroom furniture, and bathroom with separate shower cubicle and bath. Outside to the rear is a good sized terraced garden with lawn, patio and a selection of shrubs and flowers. To the front the garden is laid to lawn with shrubs, driveway parking leading to the single garage with power and light, side access to the rear with access to an outside store cupboard. Further benefits include double glazing, gas radiator central heating and solar panels.



1 Bathroom



3 Bedrooms



2 Receptions

EPC: D 68

Council Tax Band: E

Tenure: Freehold

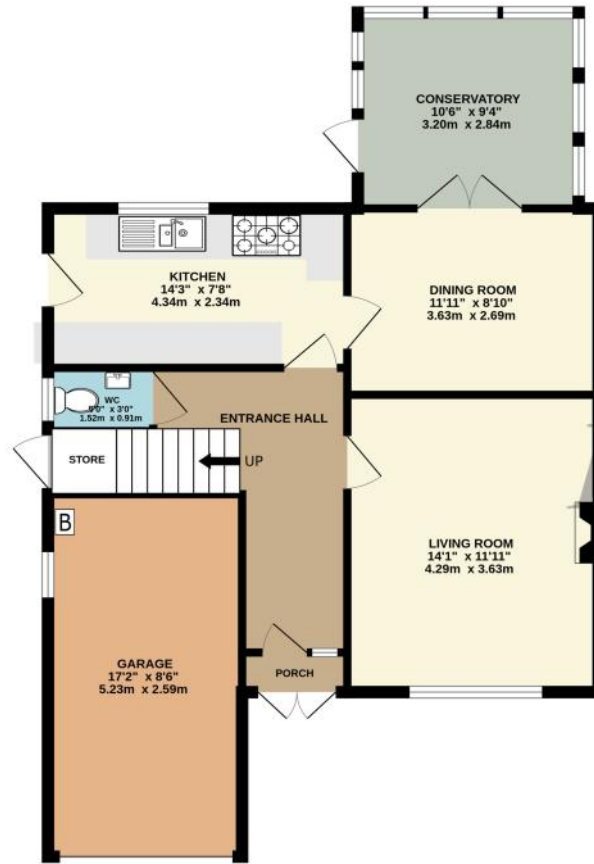


DISCLAIMER. These particulars, whilst believed to be accurate are set out as a general outline for guidance and do not constitute any part of an offer or contract. Intending purchasers should not rely on them as statements or representation of fact, but must satisfy themselves by inspection or otherwise as to their accuracy. No person in this firm's employment has the authority to make or give any representation or warranty in respect of the property. Floor plan measurements and distances are approximate only. We have not carried out a detailed survey nor tested the services, appliances or specific fittings. Your home is at risk if you do not keep up repayments on a mortgage or other loan secured on it.

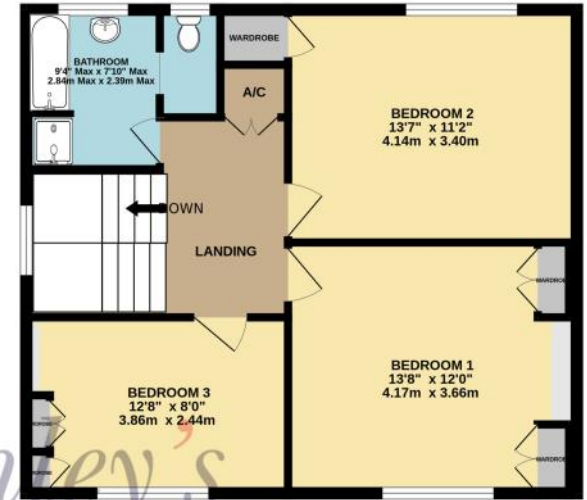




GROUND FLOOR
763 sq.ft. (70.9 sq.m.) approx.



1ST FLOOR
596 sq.ft. (55.4 sq.m.) approx.



TOTAL FLOOR AREA : 1360 sq.ft. (126.3 sq.m.) approx.

Whilst every attempt has been made to ensure the accuracy of the floorplan contained here, measurements of doors, windows, rooms and any other items are approximate and no responsibility is taken for any error, omission or mis-statement. This plan is for illustrative purposes only and should be used as such by any prospective purchaser. The services, systems and appliances shown have not been tested and no guarantee as to their operability or efficiency can be given.
Made with Metropix ©2023

