



The Mews, Cherry Orchard, Highworth, SN6 7TL

£349,950
(Subject to Contract)

Hanley's

The Mews Highworth SN6 7TL

An attractive detached three bedroom Cotswold stone cottage style property built in 1986 by Lechlade Homes which is situated in a quiet private location in the heart of Highworth within a small development of just twelve properties, just a level walk to the Market Place via a private gated access. The accommodation comprises entrance hall, cloakroom, fitted kitchen/breakfast room with quarry tiled floor, dual aspect living/dining room with fireplace and door opening to the rear garden. To the first floor: landing, airing cupboard with radiator, shower room and three bedrooms; bedroom one with fitted wardrobes. Outside to the rear is an enclosed garden which has been paved for ease of maintenance, gated side access to the front, a large garden shed/workshop with power and light and an outbuilding used for storage. To the front is an attached insulated single garage with power and light, with access to an insulated loft via a loft ladder. The property further benefits from gas fired radiator central heating, double glazing and has a lift from the living room to bedroom one.

Please note there is a management fee of £5 per month for the upkeep of external communal areas including driveway and visitor parking.



1 Shower Room



3 Bedrooms



1 Reception

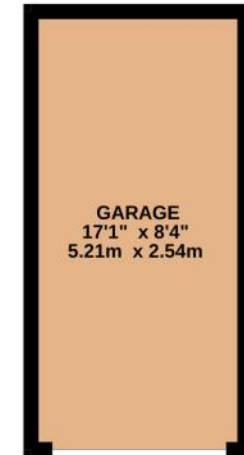
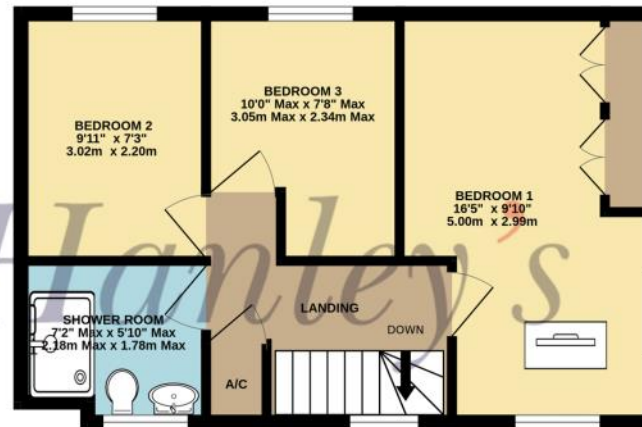
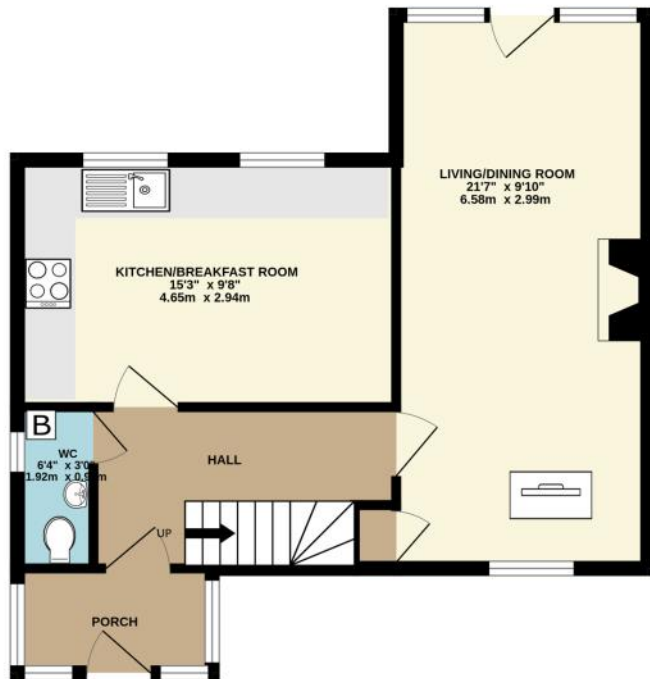
EPC: D 66

Council Tax Band: D

Tenure: Freehold



DISCLAIMER. These particulars, whilst believed to be accurate are set out as a general outline for guidance and do not constitute any part of an offer or contract. Intending purchasers should not rely on them as statements or representation of fact, but must satisfy themselves by inspection or otherwise as to their accuracy. No person in this firm's employment has the authority to make or give any representation or warranty in respect of the property. Floor plan measurements and distances are approximate only. We have not carried out a detailed survey nor tested the services, appliances or specific fittings. Your home is at risk if you do not keep up repayments on a mortgage or other loan secured on it.



TOTAL FLOOR AREA : 1004 sq.ft. (93.3 sq.m.) approx.

Whilst every attempt has been made to ensure the accuracy of the floorplan contained here, measurements of doors, windows, rooms and any other items are approximate and no responsibility is taken for any error, omission or mis-statement. This plan is for illustrative purposes only and should be used as such by any prospective purchaser. The services, systems and appliances shown have not been tested and no guarantee as to their operability or efficiency can be given.

Made with Metropix ©2024

