



Priory Green, Highworth, SN6 7NU

£385,000  
(Subject to Contract)

*Hanley's*



## Priory Green Highworth SN6 7NU

An extended four bedroom link-detached house situated in a popular cul-de-sac location within a short walk of the High Street. Set in an elevated position, the property offers far reaching rural views to the front. The versatile accommodation comprises: Entrance hall: cloakroom, living room, dining room with electric marble fireplace, kitchen with archway to the breakfast room with doors to the rear garden and garage. To the first floor are four good sized bedrooms; two with fitted wardrobes and a spacious re-fitted shower room. Outside to the front is an attractive garden laid to lawn with flower and shrub borders, a block paved driveway leading to the single garage with power and light and gated access leading to the rear garden which is set over three levels with patio area and steps to each level with established shrub and flower bed borders. The property further benefits from a water softener, gas radiator central heating and double glazing and is offered for sale with NO ONWARD CHAIN.



**1 Bathroom**



**4 Bedrooms**



**3 Receptions**

**EPC: D 64**

**Council Tax Band: E**

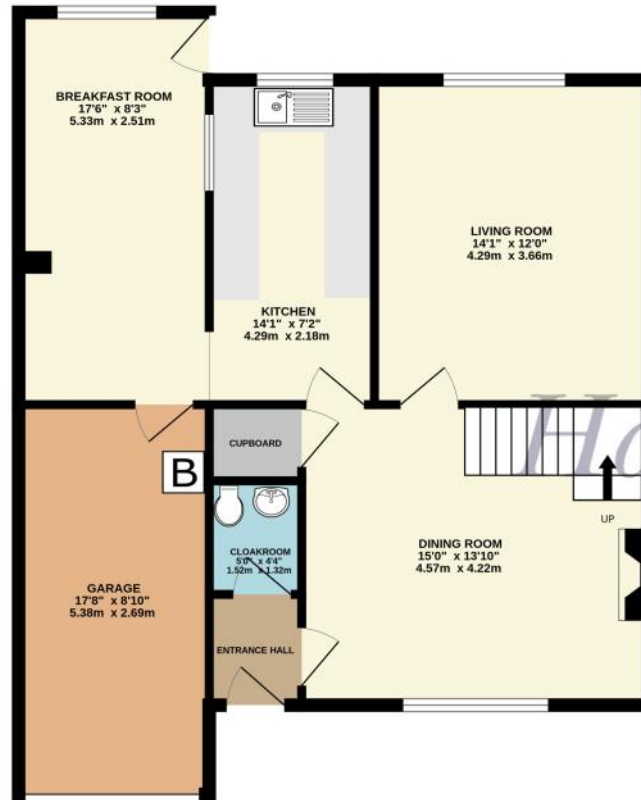
**Tenure: Freehold**



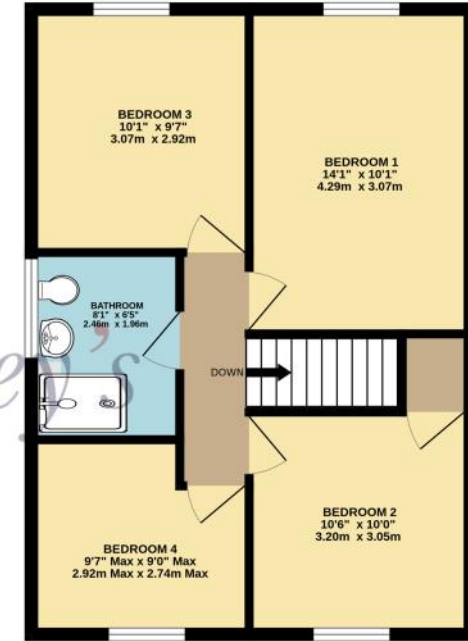
DISCLAIMER. These particulars, whilst believed to be accurate are set out as a general outline for guidance and do not constitute any part of an offer or contract. Intending purchasers should not rely on them as statements or representation of fact, but must satisfy themselves by inspection or otherwise as to their accuracy. No person in this firm's employment has the authority to make or give any representation or warranty in respect of the property. Floor plan measurements and distances are approximate only. We have not carried out a detailed survey nor tested the services, appliances or specific fittings. Your home is at risk if you do not keep up repayments on a mortgage or other loan secured on it.



GROUND FLOOR  
790 sq.ft. (73.4 sq.m.) approx.



1ST FLOOR  
516 sq.ft. (47.9 sq.m.) approx.



TOTAL FLOOR AREA : 1306 sq.ft. (121.3 sq.m.) approx.

Whilst every attempt has been made to ensure the accuracy of the floorplan contained here, measurements of doors, windows, rooms and any other items are approximate and no responsibility is taken for any error, omission or mis-statement. This plan is for illustrative purposes only and should be used as such by any prospective purchaser. The services, systems and appliances shown have not been tested and no guarantee as to their operability or efficiency can be given.  
Made with Metropix ©2024



