

£213,000 (Subject to Contract)

Hanley's



## Knowlands, Highworth, Swindon, SN6 7NE

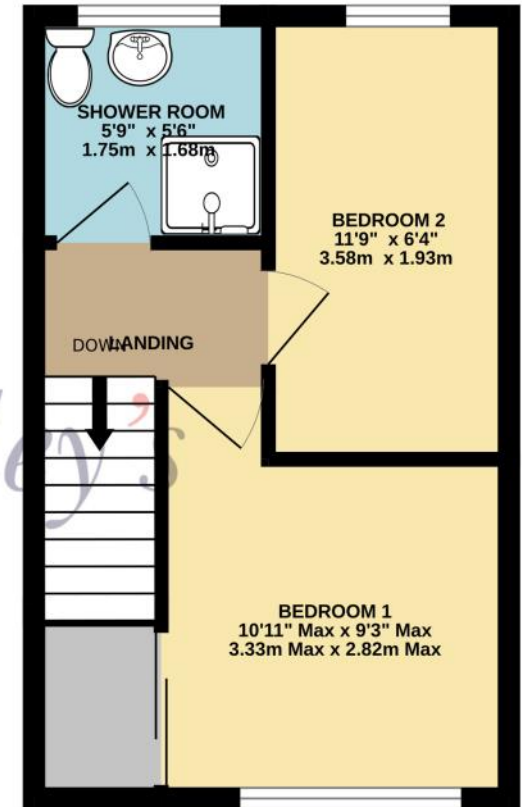
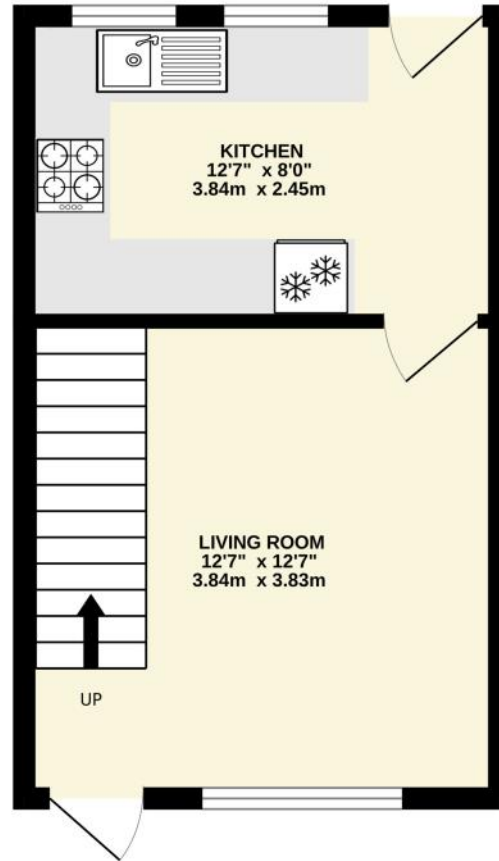
A two bedroom terraced property situated in a popular location with a pleasant outlook to the front which is offered for sale with no onward chain. The accommodation comprises: To the ground floor; living room, kitchen/dining room with door opening to the rear garden. To the first floor: landing with airing cupboard, two bedrooms and a bathroom with shower over the bath. Outside to the front is a garden with path leading to the front door, to the rear the garden is enclosed with patio area and gated rear access. The property further benefits from gas radiator central heating, double glazing and a single garage in a nearby block. Tenure: Freehold. EPC: C 71 Council tax band: B.



GROUND FLOOR  
258 sq.ft. (23.9 sq.m.) approx.



1ST FLOOR  
258 sq.ft. (23.9 sq.m.) approx.



**DISCLAIMER.** These particulars, whilst believed to be accurate are set out as a general outline for guidance and do not constitute any part of an offer or contract. Intending purchasers should not rely on them as statements or representation of fact, but must satisfy themselves by inspection or otherwise as to their accuracy. No person in this firm's employment has the authority to make or give any representation or warranty in respect of the property. Floor plan measurements and distances are approximate only. We have not carried out a detailed survey nor tested the services, appliances or specific fittings. Your home is at risk if you do not keep up repayments on a mortgage or other loan secured on it.

