



Windrush, Highworth, Swindon, SN6 7DT

£230,000
(Subject to Contract)

Hanley's

Windrush Highworth Swindon SN6 7DT

A three bedroom terraced property situated in a popular location close to Pentylands Country Park. The accommodation comprises: Entrance hall, living room, fitted kitchen/dining room with integrated dishwasher, washing machine, oven, microwave, hob and extractor fan with French doors opening onto the rear garden. To the first floor are three bedrooms and re-fitted bathroom with bath and shower over. Outside to the front is a garden laid to lawn with pathway to the front door and to the rear is a partially walled garden with raised beds, patio area and steps up to a raised decking area with gated access to the rear. A single garage sits in a nearby block with parking space to the front. The property benefits from gas radiator central heating and part double glazing and is offered for sale with no onward chain.



1 Bathroom



3 Bedrooms



1 Reception

EPC: TBA

Council Tax Band: B

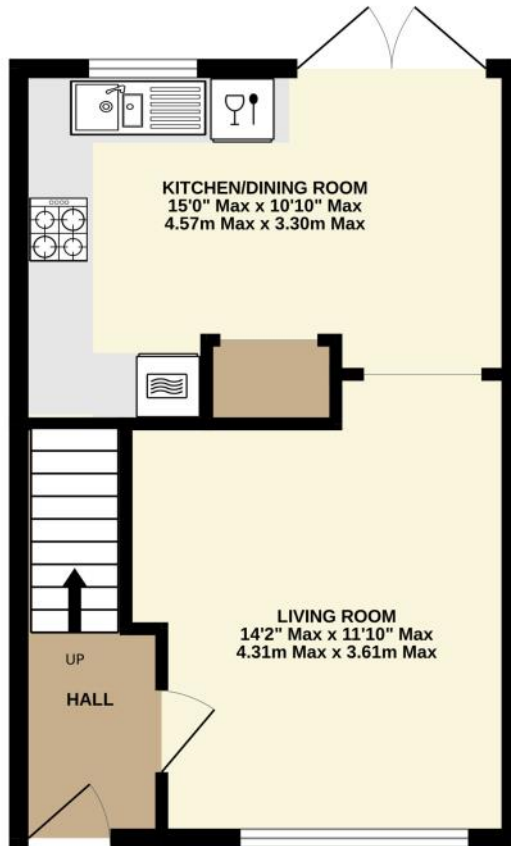
Tenure: Freehold



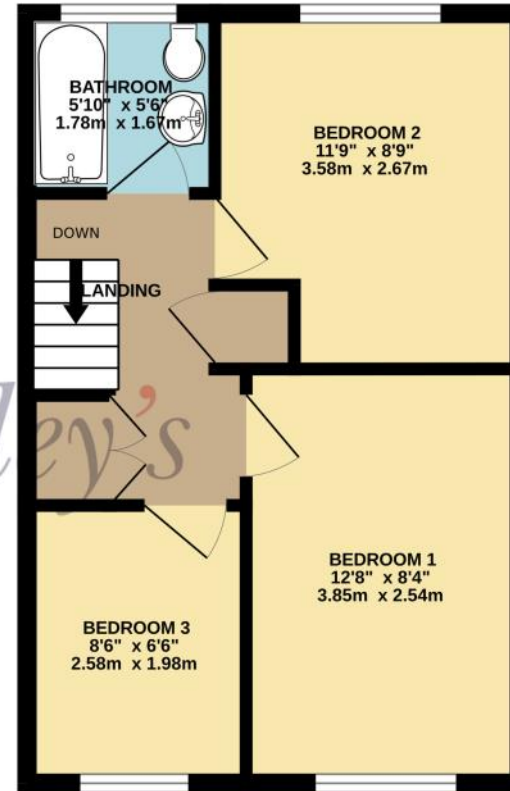
DISCLAIMER. These particulars, whilst believed to be accurate are set out as a general outline for guidance and do not constitute any part of an offer or contract. Intending purchasers should not rely on them as statements or representation of fact, but must satisfy themselves by inspection or otherwise as to their accuracy. No person in this firm's employment has the authority to make or give any representation or warranty in respect of the property. Floor plan measurements and distances are approximate only. We have not carried out a detailed survey nor tested the services, appliances or specific fittings. Your home is at risk if you do not keep up repayments on a mortgage or other loan secured on it.



GROUND FLOOR
352 sq.ft. (32.7 sq.m.) approx.



1ST FLOOR
352 sq.ft. (32.7 sq.m.) approx.



Hanley's

TOTAL FLOOR AREA : 704 sq.ft. (65.4 sq.m.) approx.

Whilst every attempt has been made to ensure the accuracy of the floorplan contained here, measurements of doors, windows, rooms and any other items are approximate and no responsibility is taken for any error, omission or mis-statement. This plan is for illustrative purposes only and should be used as such by any prospective purchaser. The services, systems and appliances shown have not been tested and no guarantee as to their operability or efficiency can be given.
Made with Metropix ©2023

