



Priory Green, Highworth, Swindon, SN6 7NU

£415,000
(Subject to Contract)

Hanley's

Priory Green Highworth Swindon SN6 7NU

A well presented four bedroom detached property situated in a sought after location just a short walk from the High Street and Market Place with far reaching views from the rear of the property. The accommodation comprises: Entrance hall with internal door to the garage, ground floor shower room, living room with wood burner and sliding glazed doors to dining room, 'John Lewis of Hungerford' fitted kitchen/breakfast room with integrated double oven, fridge, dishwasher, hob with extractor fan over and microwave. To the first floor: spacious landing with double wardrobe/storage cupboard and airing cupboard, re-fitted bathroom and four bedrooms, three of which have built in wardrobes. The property also benefits from gas radiator central heating and double glazing. Outside there is driveway parking leading to the integral garage with power and light and gated side access to the attractive landscaped rear garden.



2 Bathrooms



4 Bedrooms



2 Receptions

EPC: C 69

Council Tax Band: E

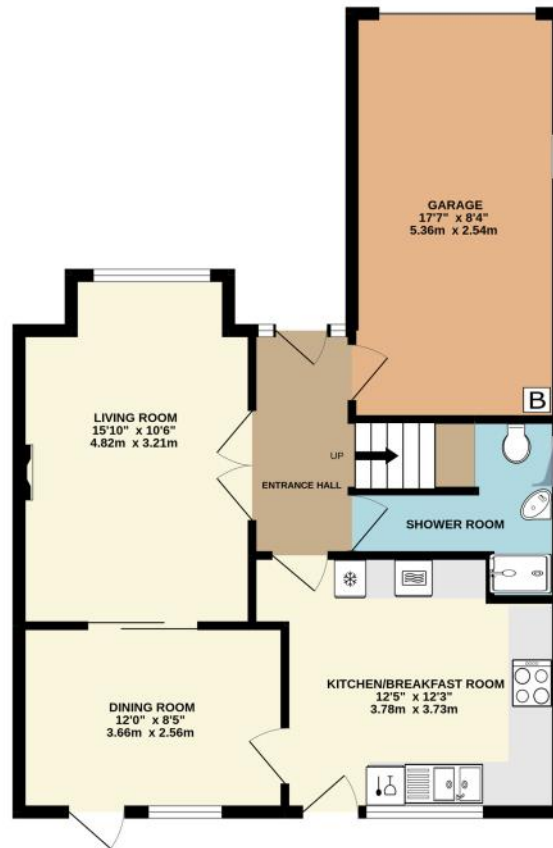
Tenure: Freehold



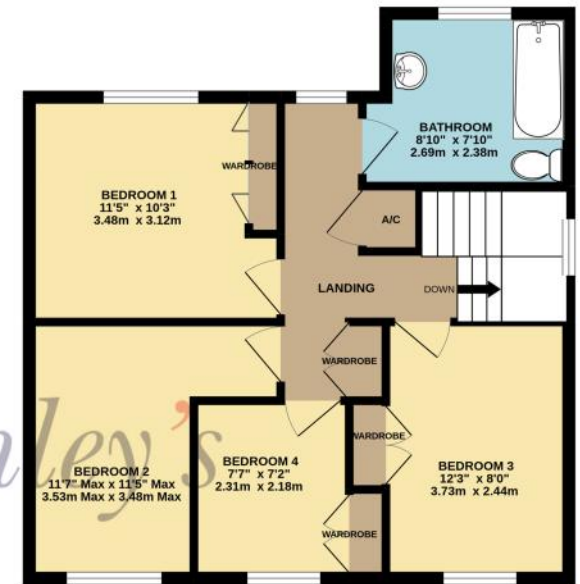
DISCLAIMER. These particulars, whilst believed to be accurate are set out as a general outline for guidance and do not constitute any part of an offer or contract. Intending purchasers should not rely on them as statements or representation of fact, but must satisfy themselves by inspection or otherwise as to their accuracy. No person in this firm's employment has the authority to make or give any representation or warranty in respect of the property. Floor plan measurements and distances are approximate only. We have not carried out a detailed survey nor tested the services, appliances or specific fittings. Your home is at risk if you do not keep up repayments on a mortgage or other loan secured on it.



GROUND FLOOR
679 sq.ft. (63.1 sq.m.) approx.



1ST FLOOR
560 sq.ft. (52.1 sq.m.) approx.



TOTAL FLOOR AREA : 1240 sq.ft. (115.2 sq.m.) approx.

Whilst every attempt has been made to ensure the accuracy of the floorplan contained here, measurements of doors, windows, rooms and any other items are approximate and no responsibility is taken for any error, omission or mis-statement. This plan is for illustrative purposes only and should be used as such by any prospective purchaser. The services, systems and appliances shown have not been tested and no guarantee as to their operability or efficiency can be given.
Made with Metropix ©2022

