

The Estate Agent People Recommend



133 Broad Hinton,
Twyford
RG10 0XJ

£1,000 Per calendar month



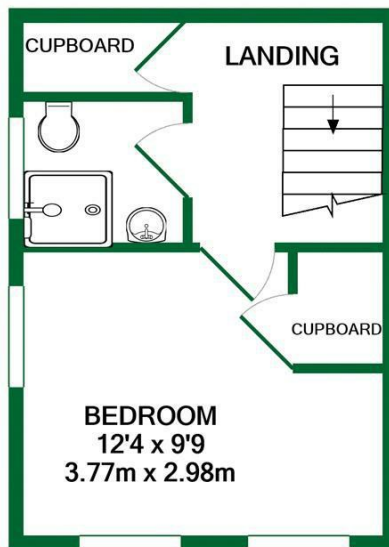
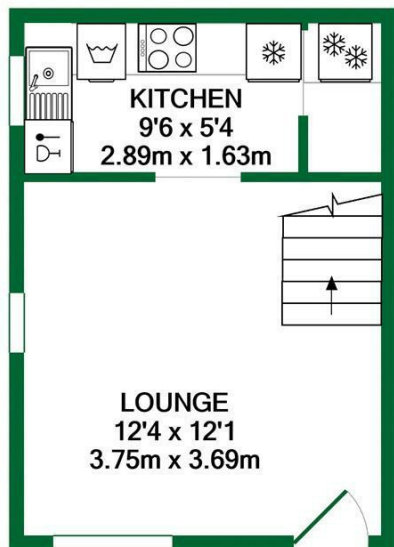
Wentworth Estate Agents have the pleasure to offer a ONE BEDROOM TERRACED house located on the popular Broad Hinton Development. Within walking distance to Twyford village and mainline railway station serving London Paddington and Reading.

The property comprises of living/dining room with dual aspect windows, refurbished kitchen, fully equipped with a washer/dryer, dishwasher, oven, hob, fridge and freezer. Double bedroom with dual aspect windows and bathroom with shower, WC and wash hand basin.

Further benefits include private parking, gas central heating and a private garden attached to the property

UNFURNISHED
LONG TERM LET
AVAILABLE - 23rd July 2025
Holding Fee - £230.76
Deposit (5 weeks) - £1,153.80

EPC - C



GROUND FLOOR
APPROX. FLOOR
AREA 215 SQ.FT.
(20.0 SQ.M.)

1ST FLOOR
APPROX. FLOOR
AREA 216 SQ.FT.
(20.1 SQ.M.)

TOTAL APPROX. FLOOR AREA 431 SQ.FT. (40.0 SQ.M.)

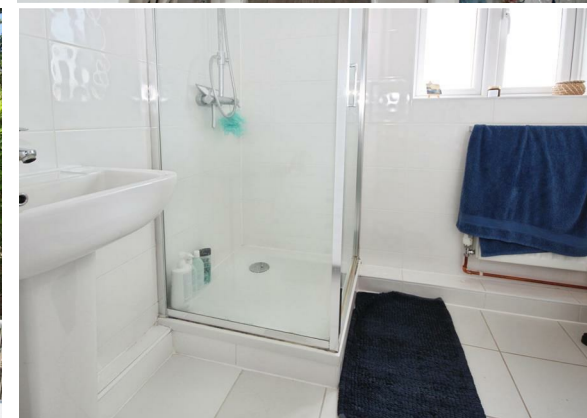
Whilst every attempt has been made to ensure the accuracy of the floor plan contained here, measurements of doors, windows, rooms and any other items are approximate and no responsibility is taken for any error, omission, or mis-statement. This plan is for illustrative purposes only and should be used as such by any prospective purchaser. The services, systems and appliances shown have not been tested and no guarantee as to their operability or efficiency can be given

Made with Metropix ©2022



ACCOMMODATION

- ONE BEDROOM HOUSE
- FULLY EQUIPPED KITCHEN
- DUAL ASPECT LIVING ROOM
- LARGE BEDROOM WITH STORAGE
- PRIVATE PARKING
- PRIVATE GARDEN
- Available: 23rd July 2025
- UNFURNISHED
- EPC - C



The Old Butchers, 15 High Street, Twyford, Berkshire, RG10 9AB
t: 0118 934 0027 e: twyford@wentworthea.com

IMPORTANT: we would like to inform prospective purchasers that these sales particulars have been prepared as a general guide only. A detailed survey has not been carried out, nor the services, appliances and fittings tested. Room sizes should not be relied upon for furnishing purposes and are approximate. If floor plans are included, they are for guidance only and illustration purposes only and may not be to scale. If there are any important matters likely to affect your decision to buy, please contact us before viewing the property.



wentworth_ea



wentworthestateagents