

The Estate Agents People Recommend



12 Isis Court, De Montfort Road,
Reading, Berkshire, RG1 8DW

£1,650 Per calendar month

WentWorth Estate Agents are pleased to present a charming two-bedroom duplex apartment on the first floor of Isis Court, boasting ample space and situated in a delightful location with serene views overlooking the River Thames. This property offers convenient access to the town centre and the train station, providing direct routes to London Paddington and the Elizabeth Line (Crossrail).

Internally, the apartment features an entrance hall, a spacious living/dining room with a secluded balcony offering direct river views, a cloakroom, and a kitchen/breakfast room with an island and extra storage. Upstairs, there are two generously sized double bedrooms accompanied by a bathroom, with toilet, basin sink and bath with shower over.

Additional benefits include residents parking, security entry, and gas central heating.

Isis Court is located at the top end of De Montfort Road and Lynmouth Road, enjoying splendid views of the River Thames. Its prime location ensures easy access to the train station, town centre, and convenient road connections to the M4.

Available from 23rd May 2025



t: 0118 934 0027

e: twyford@wentworthea.com

w: wentworthea.com

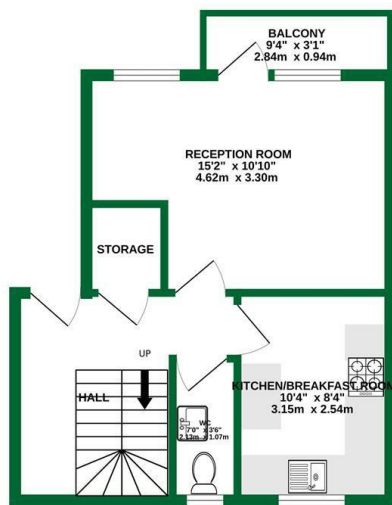


[wentworth_ea](https://twitter.com/wentworth_ea)

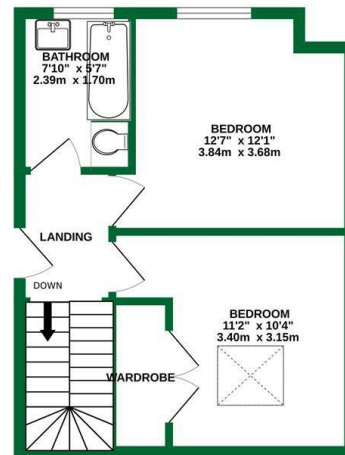


[wentworthea](https://www.facebook.com/wentworthea)

FIRST FLOOR
357 sq.ft. (33.2 sq.m.) approx.



TOP FLOOR
355 sq.ft. (33.0 sq.m.) approx.



TOTAL FLOOR AREA: 712 sq.ft. (66.2 sq.m.) approx.

Whilst every attempt has been made to ensure the accuracy of the floorplan contained here, measurements of doors, windows, rooms and any other items are approximate and no responsibility is taken for any error, omission or mis-statement. This plan is for illustrative purposes only and should be used as such by any prospective purchaser. The services, systems and appliances shown have not been tested and no guarantee as to their operability or efficiency can be given.
Made with Metropix ©2024

Important Notice 1. Particulars: These particulars are not an offer or contract, nor part of one. You should not rely on statements by Wentworth Estate Agents in the particulars or by word of mouth or in writing ("information") as being factually accurate about the property, its condition or its value. Neither Wentworth Estate Agents nor any joint agent has any authority to make any representations about the property, and accordingly any information given is entirely without responsibility on the part of the agents, seller(s) or lessor(s). 2. Photos etc: The photographs show only certain parts of the property as they appeared at the time they were taken. Areas, measurements and distances given are approximate only. 3.Regulations etc: Any reference to alterations to, or use of, any part of the property does not mean that any necessary planning, building regulations or other consent has been obtained. A buyer or lessee must find out by inspection or in other ways that these matters have been properly dealt with and that all information is correct.

