

The Estate Agent People Recommend

WentWorth

Estate Agents

14 Station Terrace,
Twyford
RG10 9NE

Price guide £550,000



Welcome to Station Terrace, Twyford - a charming Victorian Terrace located opposite Twyford Station with links to Reading and London Paddington with the additional benefit of the Elizabeth Line.

Twyford is a bustling village with coffee shops, restaurants, wine bar, shops, public houses, Tesco Express and Waitrose. It is also conveniently close to Henley on Thames, Windsor, Marlow and Reading, with easy access to major motorways and airports.

This delightful mid-terrace house is brimming with character, featuring two inviting reception rooms ideal for entertaining or unwinding with loved ones. The well-equipped kitchen at the rear boasts shaker-style cabinets, an oven, a gas hob, and space for a fridge/freezer, dishwasher, and washing machine. There's also a small breakfast bar with room for a couple of stools. The stairs lead from the dining room to the first floor, where you'll find two double bedrooms and a luxurious four-piece bathroom suite with a large walk-in shower, wash hand basin, WC, freestanding bath, and towel rail – a perfect space for relaxation. The property also includes a bonus room on the second floor, complete with fitted wardrobes and ample natural light.

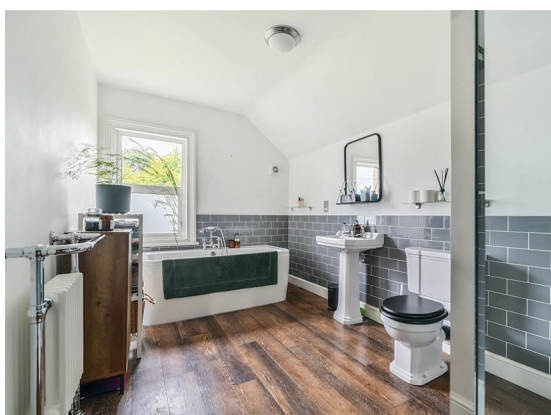
The rear garden has been beautifully landscaped, featuring a patio area, lawn, storage shed, and rear access.

Nestled in the heart of Twyford, this house offers a wonderful blend of community living and modern amenities. Whether you want to curl up with a book in one of the reception rooms, enjoy a meal and drink in the village, or take a train to Henley to meet friends and family, this home caters to all your needs.

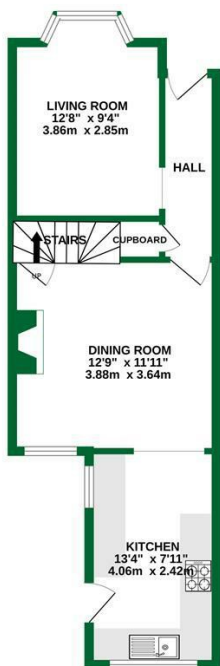
Don't miss the chance to make this house your own - come and experience the warmth and comfort that Station Terrace has to offer. Book a viewing today and step into your future home!

ACCOMMODATION

- Two bedroom Victorian Mid Terrace
- A bonus room on the second floor
- Opposite Twyford train station
- Permit Parking for two cars
- Walking distance to the village
- Landscaped garden
- Freehold
- No onward chain



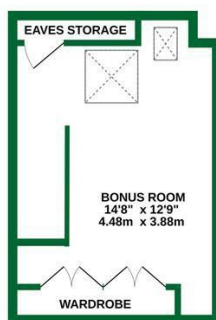
GROUND FLOOR
425 sq.ft. (39.5 sq.m.) approx.



1ST FLOOR
430 sq.ft. (39.9 sq.m.) approx.



LOFT ROOM
235 sq.ft. (21.8 sq.m.) approx.



TOTAL FLOOR AREA : 1100sq.ft. (102.2 sq.m.) approx.

Whilst every attempt has been made to ensure the accuracy of the floorplan contained here, measurements of doors, windows, rooms and any other items are approximate and no responsibility is taken for any error, omission or mis-statement. This plan is for illustrative purposes only and should be used as such by any prospective purchasers. The services, systems and appliances shown have not been tested and no guarantee as to their operability or efficiency can be given.
Made with Metropix ©2024

The Old Butchers, 15 High Street, Twyford, Berkshire, RG10 9AB
t: 0118 934 0027 e: twyford@wentworthea.com

IMPORTANT: we would like to inform prospective purchasers that these sales particulars have been prepared as a general guide only. A detailed survey has not been carried out, nor the services, appliances and fittings tested. Room sizes should not be relied upon for furnishing purposes and are approximate. If floor plans are included, they are for guidance only and illustration purposes only and may not be to scale. If there are any important matters likely to affect your decision to buy, please contact us before viewing the property.

