



Helmsdale

£120,000



Tenure: Leasehold | EPC rating: C | Council Tax :Band: B

- Open plan kitchen living room
- Garage
- Parking

- 2 Double bedrooms
- Light and neutral decor

BELVOIR!

Property is personal

Email
swindon@belvoir.co.uk

Phone
01793 542060

****CALLING ALL CASH BUYERS**** BELVOIR ARE PLEASED TO OFFER THIS IDEAL INVESTMENT OPPORTUNITY OR FIRST TIME BUYER PURCHASE, THIS CHAIN FREE SUPERBLY PRESENTED TWO-BEDROOM FIRST FLOOR APARTMENT INCLUDING GARAGE IN THE POPULAR AREA OF GREENMEADOW.

The property comprising of; entrance hallway, modern fitted kitchen equipped with appliances (fridge / freezer, washing machine and integrated oven / hob with extraction hood), spacious living room, 2 large double bedrooms and a modern fully tiled bathroom with fitted shower.

Offered to the market in good order with quality fixtures and fittings, neutral decoration throughout and double-glazed windows.

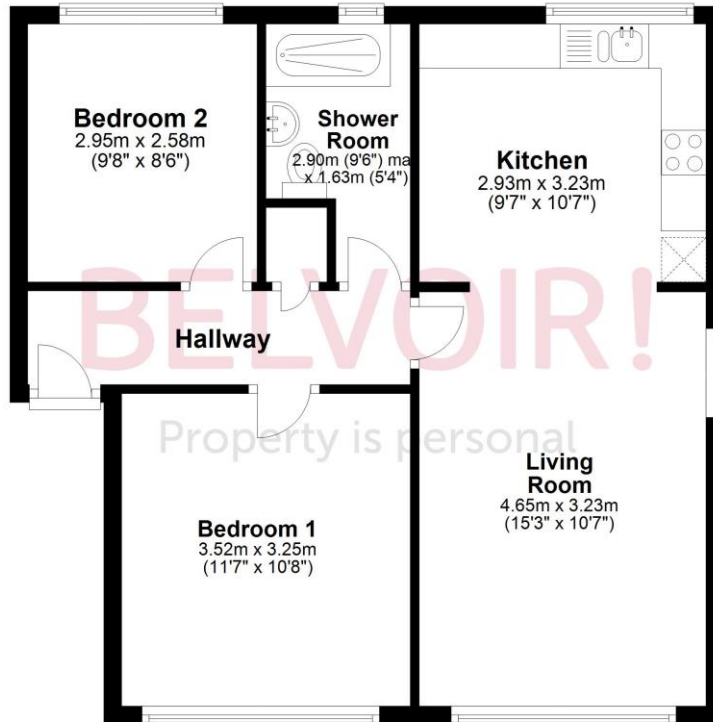
The property is leasehold, a ground rent and service charge of approximately £1200 per annum is applicable. 49 years remaining on the lease

These particulars are issued in good faith but do not constitute representations of fact or form part of any offer or contract. The matters referred to in these particulars should be independently verified by prospective buyers or tenants. Neither Belvoir nor any of its employees or agents has any authority to make or give any representation or warranty whatever in relation to this property. FLOOR PLANS - The floorplans are intended as a guide only. This is NOT TO SCALE and dimensions are approximate. These particulars have been prepared for the guidance of intending purchasers but no guarantee of their accuracy is given, neither do they form a contract of any part thereof.

Floorplan

Apartment

Approx. 54.9 sq. metres (591.0 sq. feet)



Total area: approx. 54.9 sq. metres (591.0 sq. feet)



Map



Notes