



Redhouse Gardens, Redhouse, Swindon

£154,995



Tenure: Leasehold | EPC rating: C | Council Tax

- Spacious 2 bedroom apartment
- Popular location

- 2 bathrooms
- Light and neutral décor

BELVOIR!

Property is personal

Email
swindon@belvoir.co.uk

Phone
01793 542060

Description

A beautifully presented 2 bedroom apartment with parking in the popular Redhouse area providing good access to local shops, schools and amenities.

Offered with sale with NO CHAIN the property is situated on the second floor of a modern building benefiting from modern fittings and fixtures with spacious light and airy rooms throughout.

The property comprising of; entrance hallway, bright & spacious living room with dining area, separate kitchen with integrated appliances . Master bedroom with En-suite double shower room and fitted wardrobes, second double bedroom & a further bathroom.

Further benefits include Gas central heating and allocated parking space.

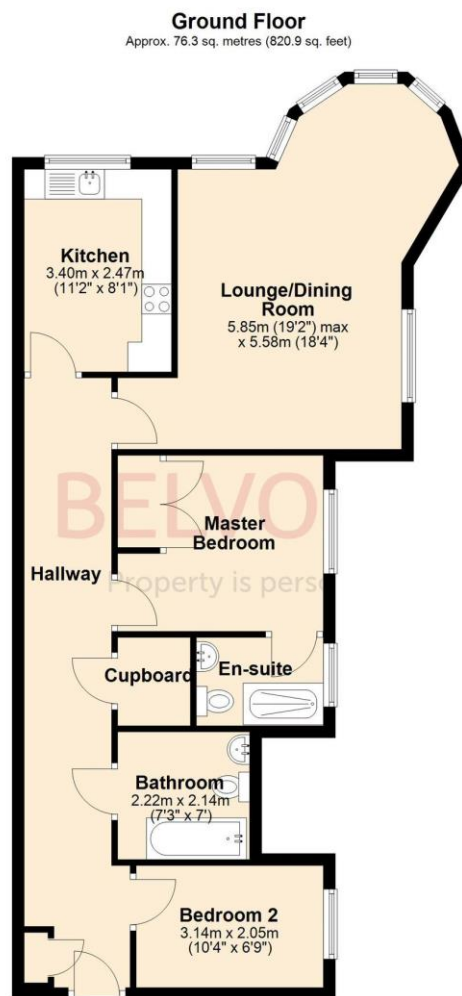
An ideal purchase for first time buyers or Investors, Early viewing recommended!!

Service charges: £1184.08 per annum

Remaining lease length: 106 years

These particulars are issued in good faith but do not constitute representations of fact or form part of any offer or contract. The matters referred to in these particulars should be independently verified by prospective buyers or tenants. Neither Belvoir nor any of its employees or agents has any authority to make or give any representation or warranty whatever in relation to this property. FLOOR PLANS - The floorplans are intended as a guide only. This is NOT TO SCALE and dimensions are approximate. These particulars have been prepared for the guidance of intending purchasers but no guarantee of their accuracy is given, neither do they form a contract of any part thereof.

Floorplan



Total area: approx. 76.3 sq. metres (820.9 sq. feet)

Photographs



Map



Notes