



Euclid Street, Central, Swindon

£175,000



Council Tax Band : B | EPC rating: C | Tenure: Leasehold

- New To The Market
- Stunningly Presented
- Modern Duplex Apartment

- Allocated secure parking space
- 2 Bathrooms

BELVOIR!

Property is personal

Email
swindon@belvoir.co.uk

Phone
01793 542060

Description

For sale is this STUNNING Two-bedroom duplex apartment situated in the highly sought after Grade 2 listed 'Old School Conversion'. Located in the heart of the Town centre and within walking distance to an abundance of amenities, Old Town, the railway and bus stations.

With its large Victorian windows and high ceilings, the ground floor offers a spacious open plan living and dining area with double doors leading onto the communal garden. A fitted kitchen, utility room with plumbing a double bedroom and showroom.

The wonderful first floor mezzanine offers a grand master bedroom, with ensuite bathroom and walk in wardrobe.

Further benefits include a communal garden with bike store and an allocated secure car parking space.

978 Years remaining on the lease
Service charges of £3580.00per annum

Offered for sale with NO CHAIN, EARLY VIEWING IS ESSENTIAL!!

These particulars are issued in good faith but do not constitute representations of fact or form part of any offer or contract. The matters referred to in these particulars should be independently verified by prospective buyers or tenants. Neither Belvoir nor any of its employees or agents has any authority to make or give any representation or warranty whatever in relation to this property. FLOOR PLANS - The floorplans are intended as a guide only. This is NOT TO SCALE and dimensions are approximate. These particulars have been prepared for the guidance of intending purchasers but no guarantee of their accuracy is given, neither do they form a contract of any part thereof.

Photographs

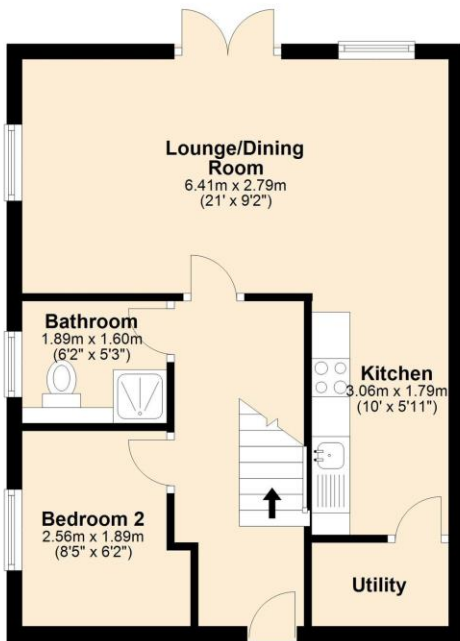


More photographs

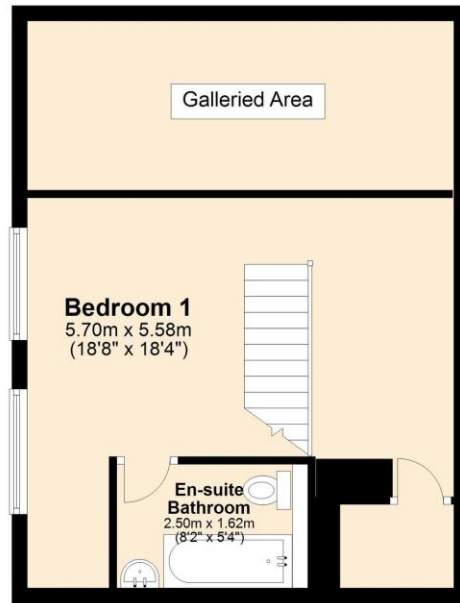


Floorplan

Ground Floor



First Floor



Map

