



## Goldsborough Close, Eastleaze, Swindon

£290,000



3



1



1

Tenure: Freehold | EPC rating: D | Council Tax band : C

- Spacious kitchen/diner
- Three double bedrooms
- Garage

- Driveway parking
- Cloakroom
- Neutral décor throughout

# BELVOIR!

Property is personal

Email  
[swindon@belvoir.co.uk](mailto:swindon@belvoir.co.uk)

Phone  
**01793 542060**

## Description

Belvoir are pleased to offer for sale this three-bedroom semi-detached home located in Eastleaze, West Swindon. This home is being sold with NO ONWARD CHAIN.

Tucked away in a quiet cul-de-sac the property benefits from a spacious fitted kitchen/diner, cloakroom, lounge, three double bedrooms, modern fitted bathroom with shower and front and rear gardens.

Further benefits include a garage, gravelled driveway in front for several vehicles, double glazed windows and gas central heating

Convenient access to the M4 and A419

Viewing is highly recommended!!!

These particulars are issued in good faith but do not constitute representations of fact or form part of any offer or contract. The matters referred to in these particulars should be independently verified by prospective buyers or tenants. Neither Belvoir nor any of its employees or agents has any authority to make or give any representation or warranty whatever in relation to this property. FLOOR PLANS - The floorplans are intended as a guide only. This is NOT TO SCALE and dimensions are approximate. These particulars have been prepared for the guidance of intending purchasers but no guarantee of their accuracy is given, neither do they form a contract of any part thereof.

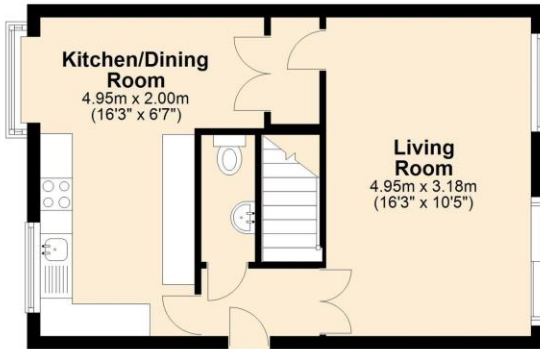
## Photographs



# Floorplan

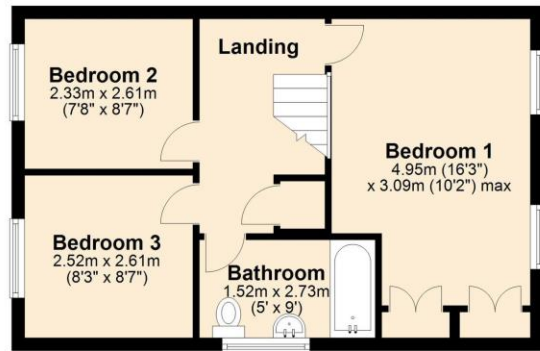
## Ground Floor

Approx. 37.9 sq. metres (408.3 sq. feet)



## First Floor

Approx. 38.9 sq. metres (418.3 sq. feet)



Total area: approx. 76.8 sq. metres (826.6 sq. feet)

# Map



[www.belvoir.co.uk/offices/swindon](http://www.belvoir.co.uk/offices/swindon)