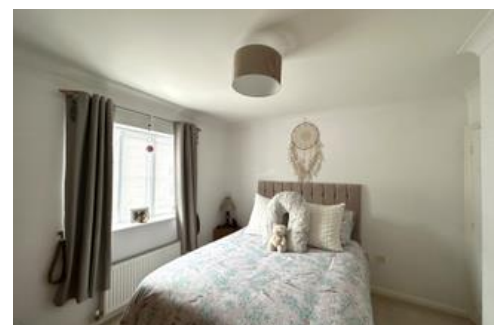




Winton Road, Swindon

£270,000



Council Tax Band: D | Freehold | EPC rating: C

- Semi - detached house
- Modern family home

- Light and neutral décor
- Driveway parking

BELVOIR!

Property is personal

Email
swindon@belvoir.co.uk

Phone
01793 542060

Description

Belvoir are pleased to offer for sale this well presented 3-bedroom semi-detached family home situated in the popular area of Upper Stratton, Swindon.

Close to schools, shops, many amenities and with easy access to the A419 and M4.

The property comprises of entrance hall, downstairs cloakroom, kitchen equipped with integrated fridge/freezer, dishwasher, oven and hob and a spacious lounge/dining area.

Upstairs your find 3 good sized bedrooms all with built in wardrobe/storage space and a modern fitted family bathroom.

Externally you have an enclosed low maintenance rear garden and a driveway to the side of the property. The property also benefits from gas central heating and UPVC double glazing.

Viewing is highly recommended!

These particulars are issued in good faith but do not constitute representations of fact or form part of any offer or contract. The matters referred to in these particulars should be independently verified by prospective buyers or tenants. Neither Belvoir nor any of its employees or agents has any authority to make or give any representation or warranty whatever in relation to this property. FLOOR PLANS - The floorplans are intended as a guide only. This is NOT TO SCALE and dimensions are approximate. These particulars have been prepared for the guidance of intending purchasers but no guarantee of their accuracy is given, neither do they form a contract of any part thereof.

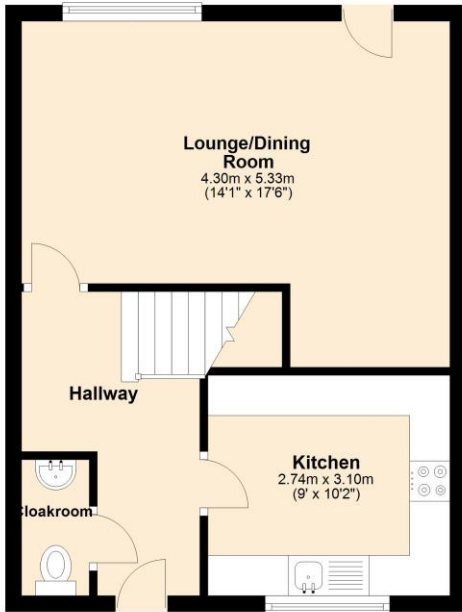
Photographs



Floorplan

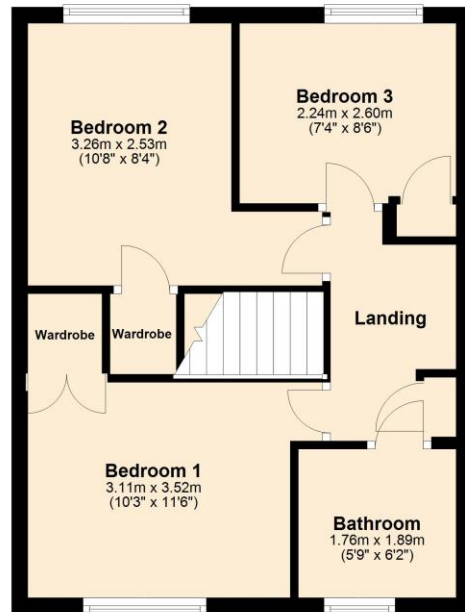
Ground Floor

Approx. 38.3 sq. metres (411.9 sq. feet)



First Floor

Approx. 36.2 sq. metres (390.0 sq. feet)



Total area: approx. 74.5 sq. metres (801.8 sq. feet)

Map



www.belvoir.co.uk/offices/swindon