



Majestic Close, Middleleaze, Swindon

Offers in excess of £200,000



Council Tax Band B | Freehold | EPC rating: E

- Neutral décor throughout
- 2 Allocated car parking spaces
- Popular location

- Gas central heating
- Generous garden

BELVOIR!

Property is personal

Email
swindon@belvoir.co.uk

Phone
01793 542060

Description

Offered for sale with NO ONWARD CHAIN a 2 bedroom terraced house with rear gardens and PARKING in the popular Middleleaze area of West Swindon. Ideal for FIRST TIME BUYERS or INVESTORS .

The property comprising of: living room with storage, large kitchen / diner, master bedroom with fitted wardrobes, single bedroom with fitted wardrobe and a modern bathroom with fitted shower.

Enclosed rear gardens with lawn and decking, stone gravel garden to the front.

The property benefits from Gas central heating and 2 allocated parking spaces.

Call 01793 542060 to view today!!!

These particulars are issued in good faith but do not constitute representations of fact or form part of any offer or contract. The matters referred to in these particulars should be independently verified by prospective buyers or tenants. Neither Belvoir nor any of its employees or agents has any authority to make or give any representation or warranty whatever in relation to this property. FLOOR PLANS - The floorplans are intended as a guide only. This is NOT TO SCALE and dimensions are approximate. These particulars have been prepared for the guidance of intending purchasers but no guarantee of their accuracy is given, neither do they form a contract of any part thereof.

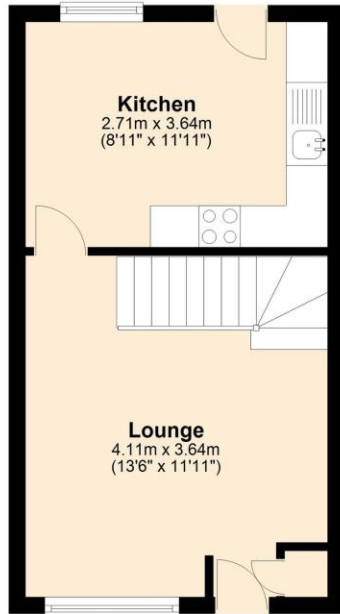
Photographs



Floorplan

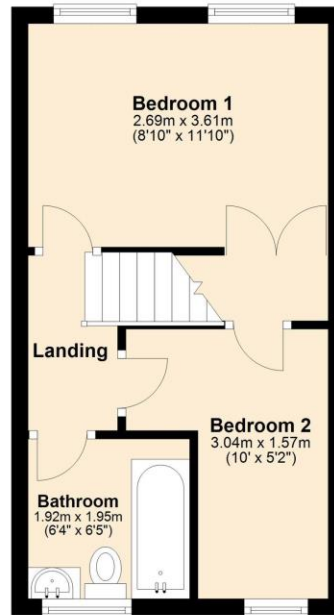
Ground Floor

Approx. 25.2 sq. metres (271.1 sq. feet)



First Floor

Approx. 24.5 sq. metres (263.9 sq. feet)



Total area: approx. 49.7 sq. metres (535.0 sq. feet)

Map



www.belvoir.co.uk/offices/swindon