



Selwyn Road, Tadpole Garden Village, Swindon

Offers over £250,000



Freehold | EPC rating: C | Council Tax Band: C

- Freehold
- Immaculate condition
- Spacious

- Sort after location
- Garage
- Gardens

BELVOIR!

Property is personal

Email
swindon@belvoir.co.uk

Phone
01793 542060

Description

IMMACULATE two-bedroom spacious detached coach house with GARDEN, GARAGE and ALLOCATED PARKING in the sought after Tadpole Garden Village offered for sale with NO ONWARD CHAIN.

Built to a high standard by Crest Nicholson the property comprising of a private entrance hallway / stairway, beautiful open plan living room, high spec fitted kitchen equipped with integrated appliances including oven / hob with extraction hood, dishwasher, fridge & freezer. Utility room with storage and space / plumbing for washing machine. Two double bedrooms with the master bedroom benefitting from a luxury En-suite shower room and fitted wardrobes. Hallway with storage and a further bathroom with fitted shower.

Further benefits include a large garage with lighting / power with a separate storage room, spacious private gravelled garden. Gas central heating and double glazing throughout.

This property is a real GEM, do not miss out call our office on 01793 542060!!

These particulars are issued in good faith but do not constitute representations of fact or form part of any offer or contract. The matters referred to in these particulars should be independently verified by prospective buyers or tenants. Neither Belvoir nor any of its employees or agents has any authority to make or give any representation or warranty whatever in relation to this property. FLOOR PLANS - The floorplans are intended as a guide only. This is NOT TO SCALE and dimensions are approximate. These particulars have been prepared for the guidance of intending purchasers but no guarantee of their accuracy is given, neither do they form a contract of any part thereof.

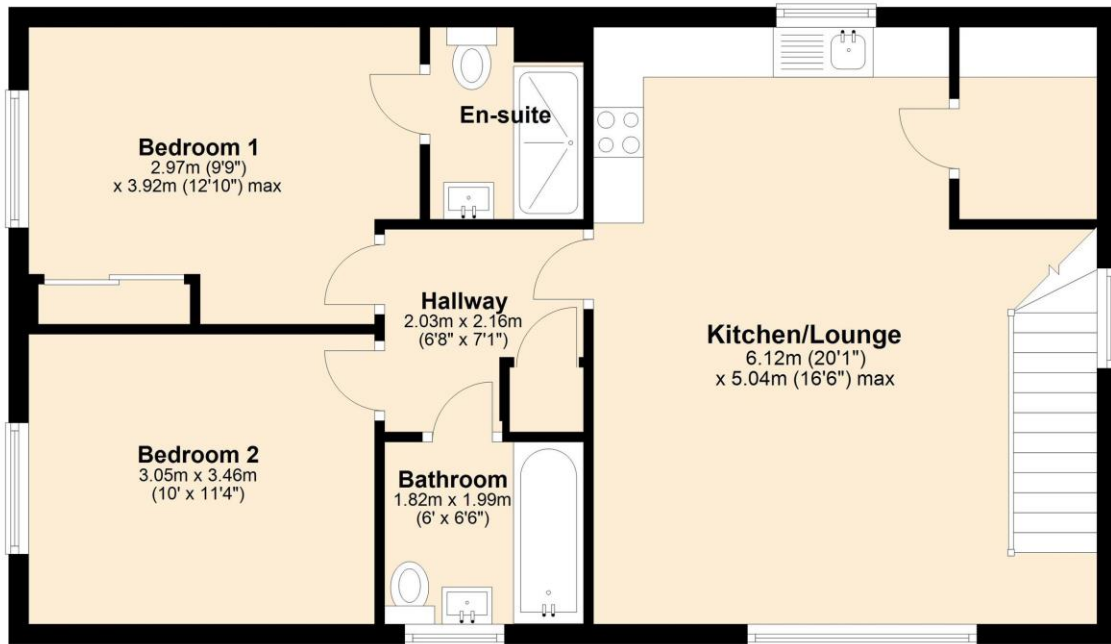
Photographs



Floorplan

Ground Floor

Approx. 64.3 sq. metres (691.6 sq. feet)



Total area: approx. 64.3 sq. metres (691.6 sq. feet)

Map



www.belvoir.co.uk/offices/swindon