



**MILLER
EVANS**

SHREWSBURY'S ESTATE AGENT

**Apt D, Haycock House, 1 College Hill, Shrewsbury,
SY1 1LT**

£160,000 Region

To view this property please call us on **01743 236 800** Ref: T7684/SL/KQ

A spacious and well presented, one bedroom leasehold ground floor apartment.

This spacious one bedroom apartment provides well planned and well proportioned accommodation throughout. The main reception room boasts elegant Georgian proportions with many original features including original folding shutters to the windows, moulded cornice, picture rail and fireplace with surround and mantel, spacious bedroom with glazed door to a small patio area, bathroom and well appointed galley kitchen. The property benefits from electric heating.

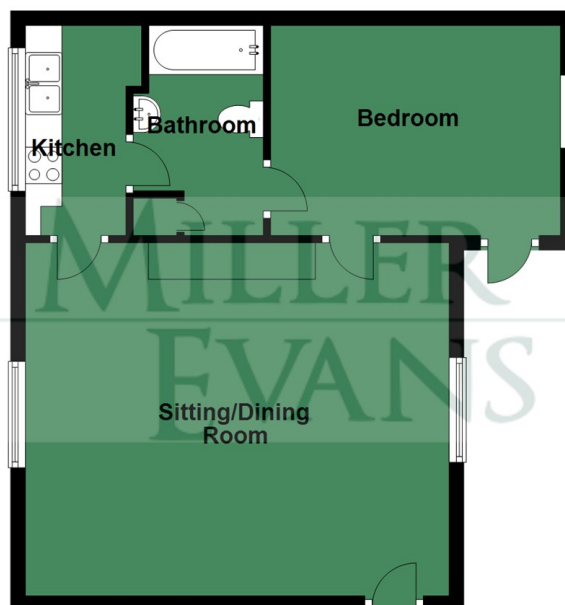
The property occupies an enviable town centre location, with views over the gardens towards St Chads, situated in the heart of Shrewsbury's town centre, adjacent to fashionable bars and restaurants, boutique style shops, the Quarry Park and Dingle Gardens and Theatre Severn and Shrewsbury railway station. Viewing is highly recommended.



FLOOR PLANS

Floor Plan

Approx. 553.8 sq. feet



Total area: approx. 553.8 sq. feet

Illustration For Identification Purposes Only. Not To Scale.
Plan produced using PlanUp.

INSIDE THE PROPERTY

LARGE SITTING ROOM / DINING ROOM
15'10" x 19'0" (4.83m x 5.79m)

KITCHEN

9'5" x 6'7" (2.87m x 2.00m)
Fitted with a range of matching units

BEDROOM

9'5" x 13'0" (2.87m x 3.96m)
Door to rear patio.

BATHROOM

Panelled bath with shower
Wash hand basin, wc
Washing machine

OUTSIDE THE PROPERTY

There is a small enclosed rear patio.



