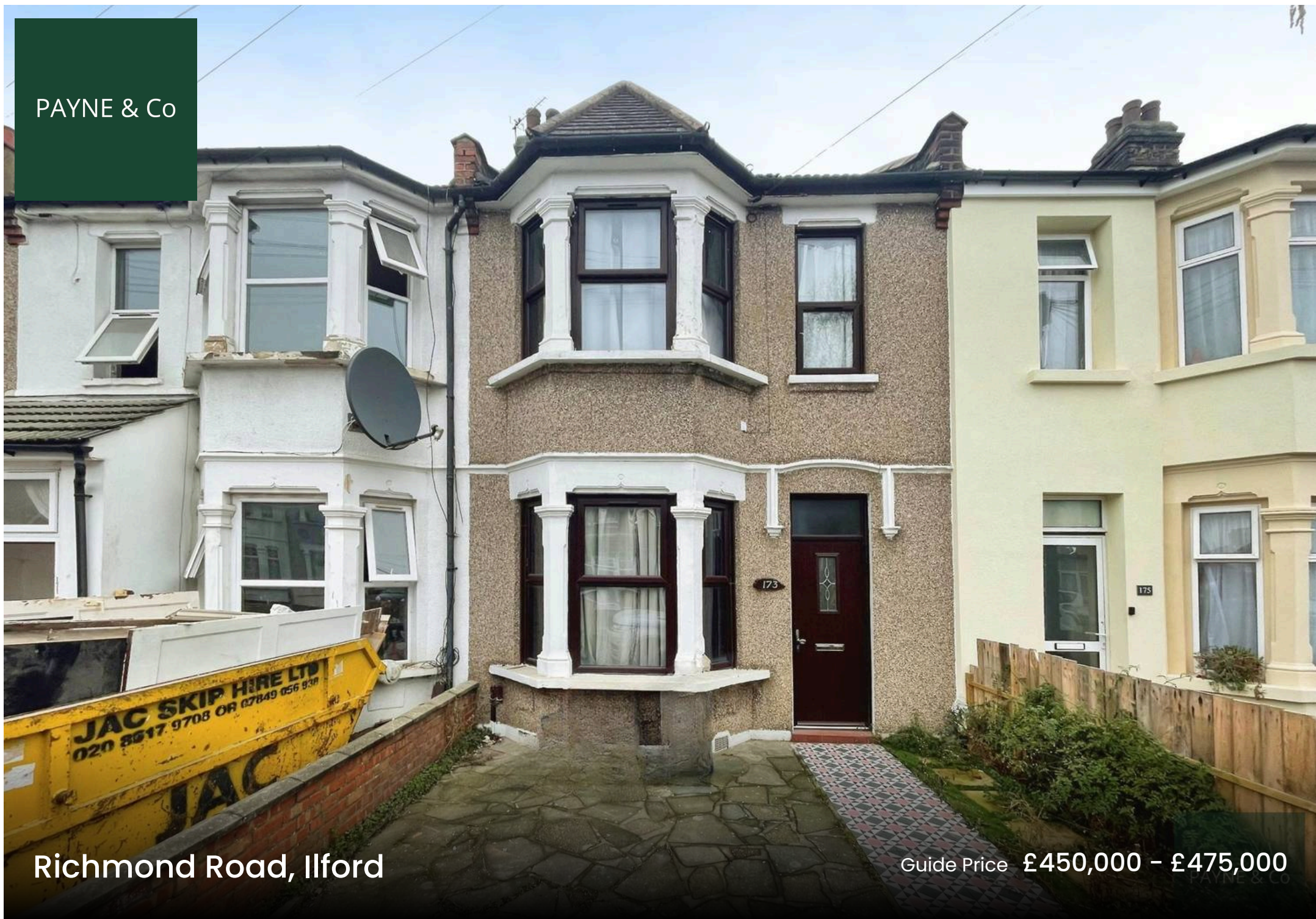


PAYNE & Co



Richmond Road, Ilford

Guide Price £450,000 - £475,000

Richmond Road

Ilford, Ilford

Guide Price £450,000 – £475,000. This terraced house, located just off Ilford Lane, is on the market for sale. The property features three bedrooms, a ground-floor bathroom, and a fitted kitchen that provides access to the garden. Two reception rooms also provide ample space for relaxation or entertaining guests. Adding to the convenience, the property includes off-street parking and a separate WC on the ground floor. Located within proximity of public transport links, amenities, schools, and parks all nearby, making it an ideal living environment. The rear garden is a perfect space to enjoy outdoor activities or simply to relax in. This property represents a great opportunity for first-time buyers looking to take their first step onto the property ladder or investors seeking a promising addition to their portfolio. We encourage you to visit this home, please call our sale team today.

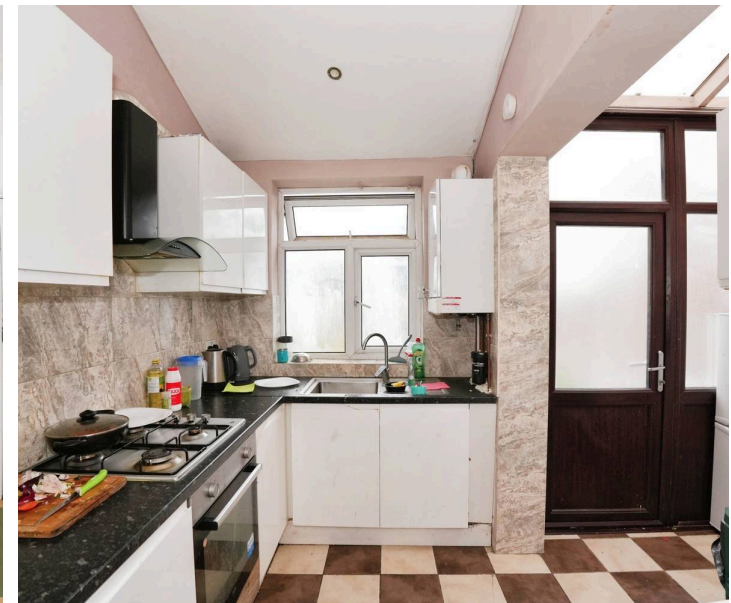
Council Tax band: C

Tenure: Freehold

EPC Energy Efficiency Rating: D

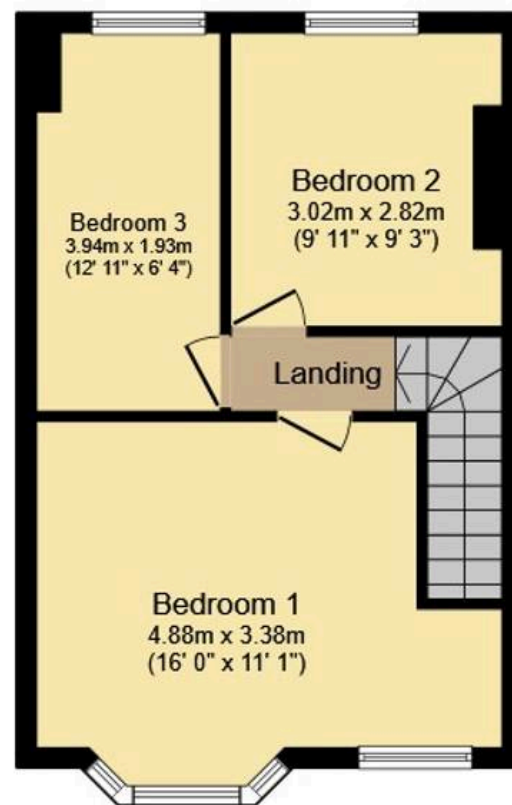
EPC Environmental Impact Rating: D

- Three Bedrooms
- Two Receptions
- Ground Floor Bathroom/WC
- Separate Ground Floor WC
- Off Street Parking
- Rear Garden





Ground Floor



First Floor



PAYNE & Co



Payne & Co

Payne & Co, 151 Cranbrook Road – IG1 4TA

020 8518 3000 • ilford@payneandco.co.uk • payneandco.co.uk

A private rental licensing scheme applies to some properties in this area, please contact us before proceeding. Legal advice should be taken to verify fixtures/fittings, planning, alterations and/or lease details. Appliances & services are untested, dimensions are approximate, and floor plans are not to scale.