

PAYNE & Co

Meath Road, Ilford

In Excess of £375,000





# Meath Road

## Ilford

For sale is a charming end of terraced converted flat in a sought-after location. The property has been neutrally decorated throughout, providing a ready-to-move-in space that you can easily make your own. Boasting 2 bedrooms, a bathroom, a reception room, and a kitchen, this sizable property offers ample living space. The reception room is the perfect place to gather for an evening with family or to sit back and relax after a long day. The kitchen, practical in its design, is able to cope with all your culinary activities. Enjoy two comfortable bedrooms with space for rest and relaxation. The contemporary bathroom complements the flat perfectly. Added to this is the excellent location that encompasses nearby parks, cycling routes, and green spaces. Not to mention, local amenities and public transport links are within close proximity. Don't miss out on this unique opportunity to acquire a property in this exceptional locale.

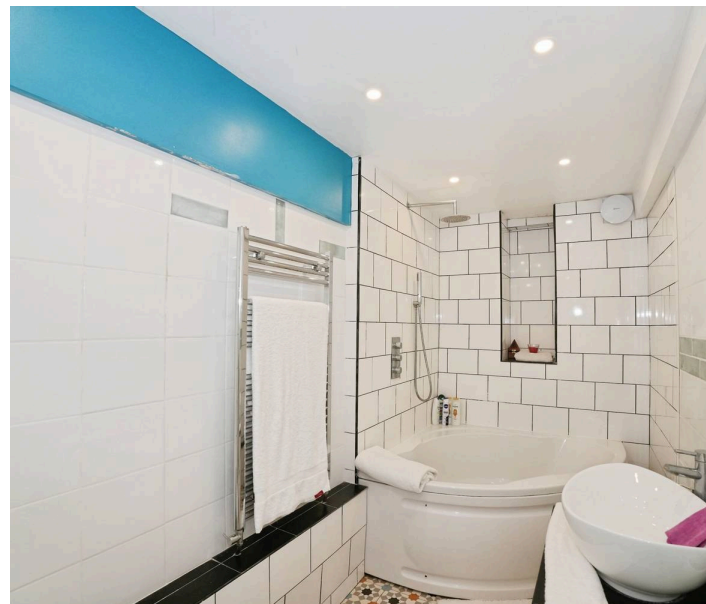
Council Tax band: B

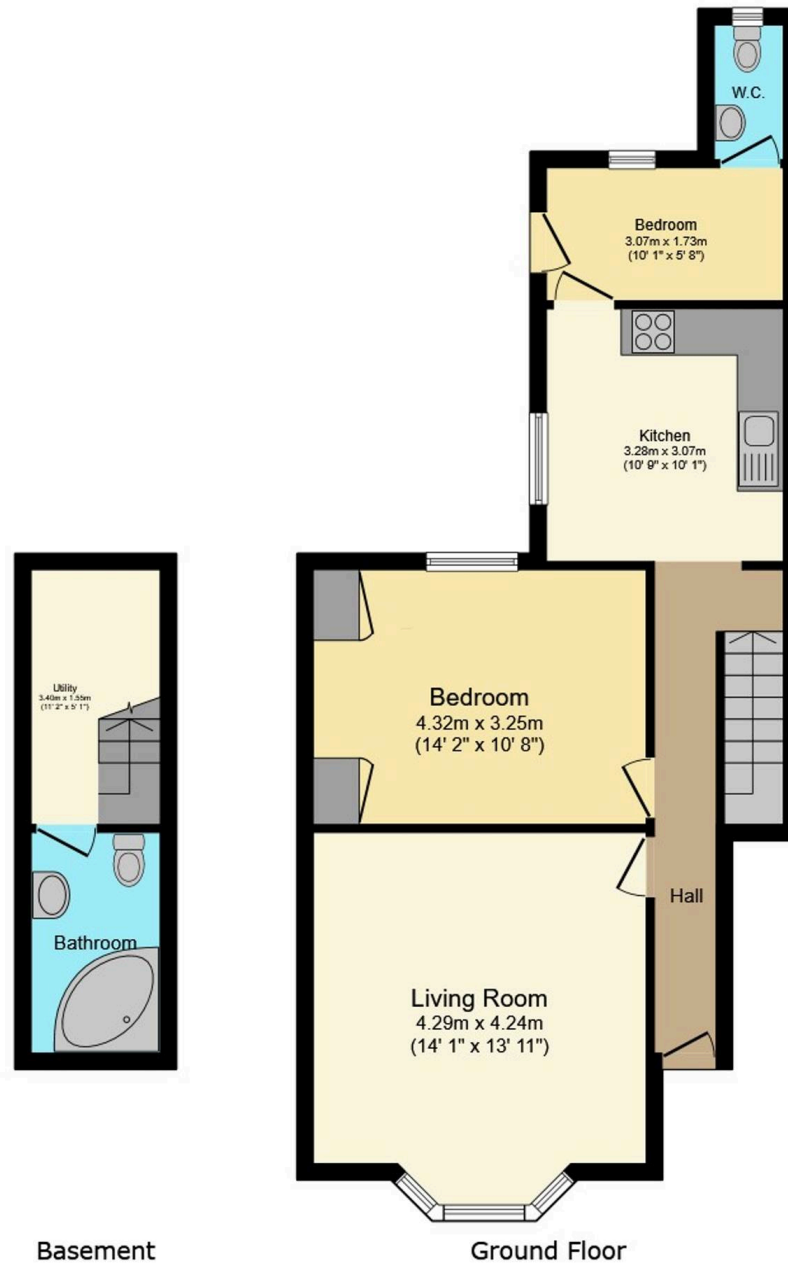
Tenure: Leasehold

EPC Energy Efficiency Rating: D

EPC Environmental Impact Rating: D

- Ground floor flat
- Two bedrooms
- Utility room
- Basement
- Rear garden
- Off street parking
- Side access





This floor plan is for illustrative purposes only. It is not drawn to scale. Any measurements, floor areas (including any total floor area), openings and orientations are approximate. No details are guaranteed, they cannot be relied upon for any purpose and do not form any part of any agreement. No liability is taken for any error, omission or misstatement. A party must rely upon its own inspection(s). Powered by [www.Propertybox.io](http://www.Propertybox.io)

PAYNE & Co



PAYNE & Co



## Payne & Co

Payne & Co, 151 Cranbrook Road – IG1 4TA

020 8518 3000 • [ilford@payneandco.co.uk](mailto:ilford@payneandco.co.uk) • [payneandco.co.uk](http://payneandco.co.uk)

A private rental licensing scheme applies to some properties in this area, please contact us before proceeding. Legal advice should be taken to verify fixtures/fittings, planning, alterations and/or lease details. Appliances & services are untested, dimensions are approximate, and floor plans are not to scale.