



PAYNE & Co

Blackthorn Road, Ilford

Guide Price £425,000 – £450,000

Blackthorn Road

Ilford,

Presenting this end of terrace house for sale. Maintained in good condition, this property has a lot to offer its potential new homeowners. The house comes with a total of four bedrooms, offering ample space for a family or for guest accommodation. The property features two bathrooms, ensuring there is plenty of facilities for all occupants. The house benefits from a single reception room, a welcoming space for entertaining or relaxing. The kitchen is well-appointed, providing the ideal setting for preparing meals and entertaining guests. Adding to the appeal of this property is the allocated parking space, providing convenience and security for your vehicle. This end of terrace house is an excellent opportunity to secure a family home in the United Kingdom, offering a comfortable lifestyle with its generous number of rooms and good condition. This property is ready for you to make it your own. The features are well-maintained and ready for you to enjoy. Don't miss out on the opportunity to own this wonderful property.

Council Tax band: D

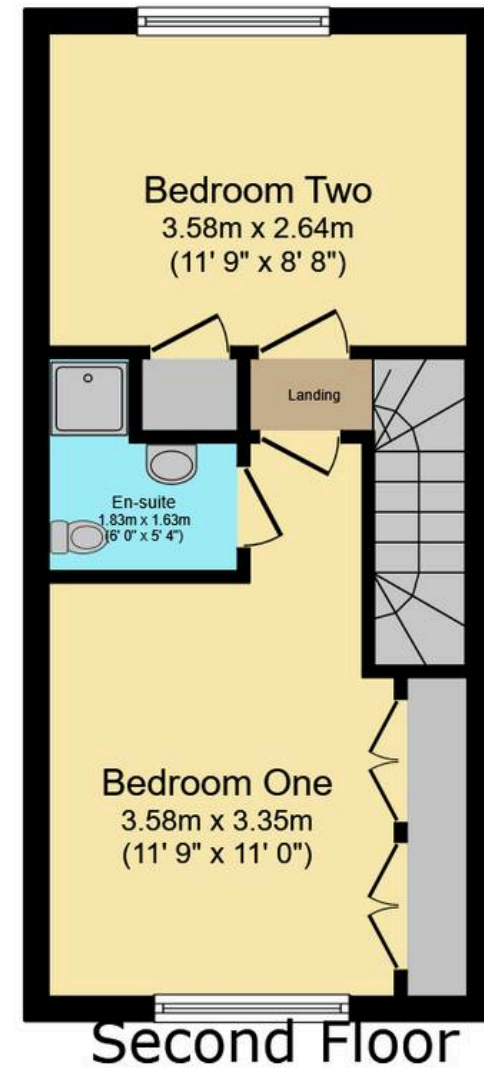
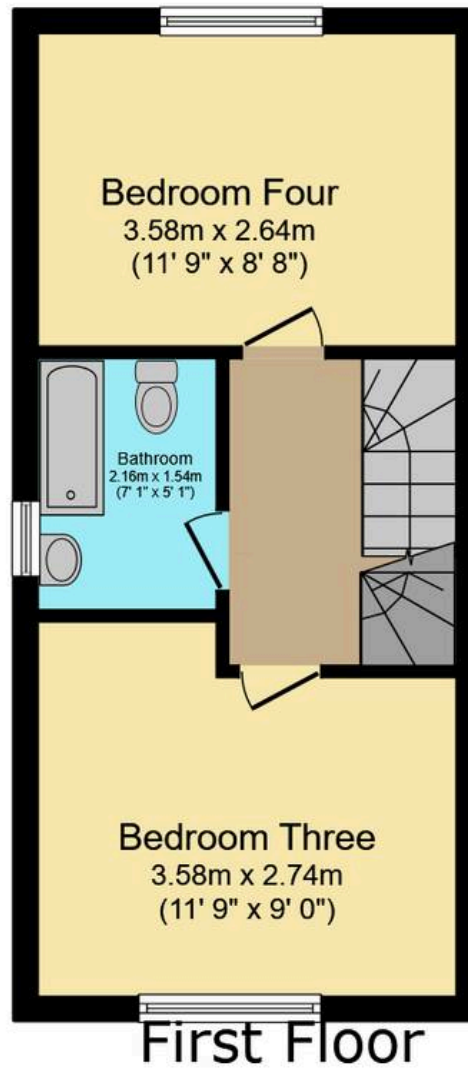
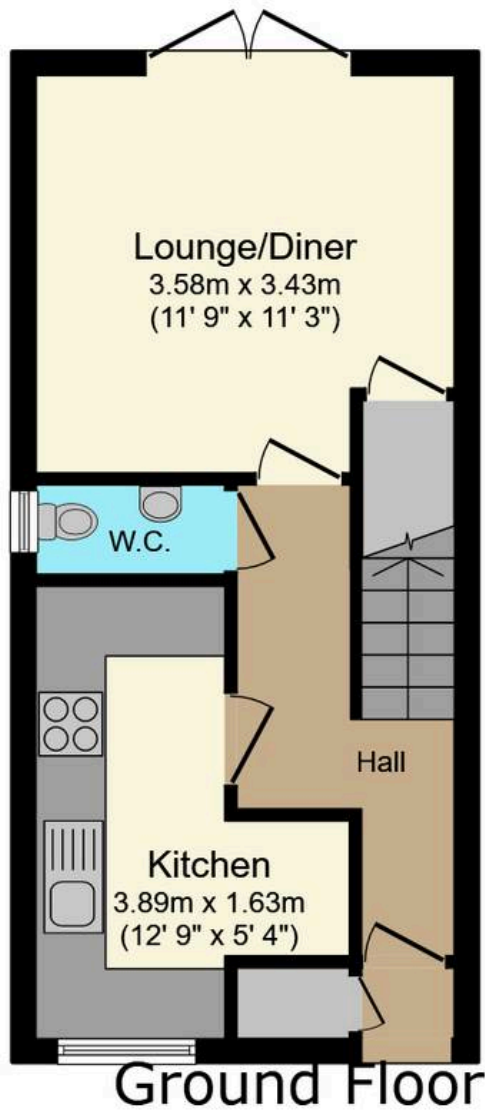
Tenure: Freehold

EPC Energy Efficiency Rating: C

EPC Environmental Impact Rating: C

- No Onward Chain
- Four Bedrooms
- Two Bathrooms
- Lounge Diner
- Rear Garden
- Allocated Parking







PAYNE & Co



PAYNE & Co

Payne & Co

Payne & Co, 151 Cranbrook Road – IG1 4TA

020 8518 3000 • ilford@payneandco.co.uk • payneandco.co.uk

A private rental licensing scheme applies to some properties in this area, please contact us before proceeding. Legal advice should be taken to verify fixtures/fittings, planning, alterations and/or lease details. Appliances & services are untested, dimensions are approximate, and floor plans are not to scale.