

Situated within a retirement park, this detached two-bedroom home is beautifully presented both inside and out and is available for sale chain-free. Filled with natural light, the property features a spacious sitting and dining area, a thoughtfully designed modern kitchen, and a sleek, stylish bathroom suite. The private, low-maintenance garden offers a peaceful retreat, while a garage conveniently sits adjacent to the home.

Sitting/Dining Room

19' 3" x 15' 0" (5.88m x 4.57m)

Well proportioned room with dual aspect windows to front, window to side, enjoying plenty of natural light. Inset electric fire with feature surround. Door leading to side access. Two radiators.

Kitchen

9' 3" x 9' 7" (2.82m x 2.91m)

Modern kitchen with wall and base cupboard and drawer units with work tops over. Inset sink and drainer. Space for washing machine and full fridge freezer. Electric oven with gas hob and extractor hood over. Storage cupboard, window to side and door leading to the driveway. Radiator

Inner Hallway

9' 6" x 3' 3" (2.89m x 0.98m)

Bedroom 1

9' 10" x 9' 3" (2.99m x 2.83m)

Good size double room with fitted wardrobes. Window to side and radiator

Bedroom 2

9' 6" x 6' 4" (2.90m x 1.93m)

Well presented room with fitted wardrobes. Window to side and radiator

Bathroom

9' 5" x 4' 7" (2.88m x 1.39m)

WC and pedestal wash basin. Bath with shower attachment. Window to side and radiator.

Outside

Front Garden

Paved block driveway for parking. Small lawn area.

Rear Garden

Enclosed by mature hedge offering privacy. Low maintenance with paved pathways and shingle.

Garage

15' 7" x 8' 1" (4.75m x 2.46m)

With up and over door. Power connected.

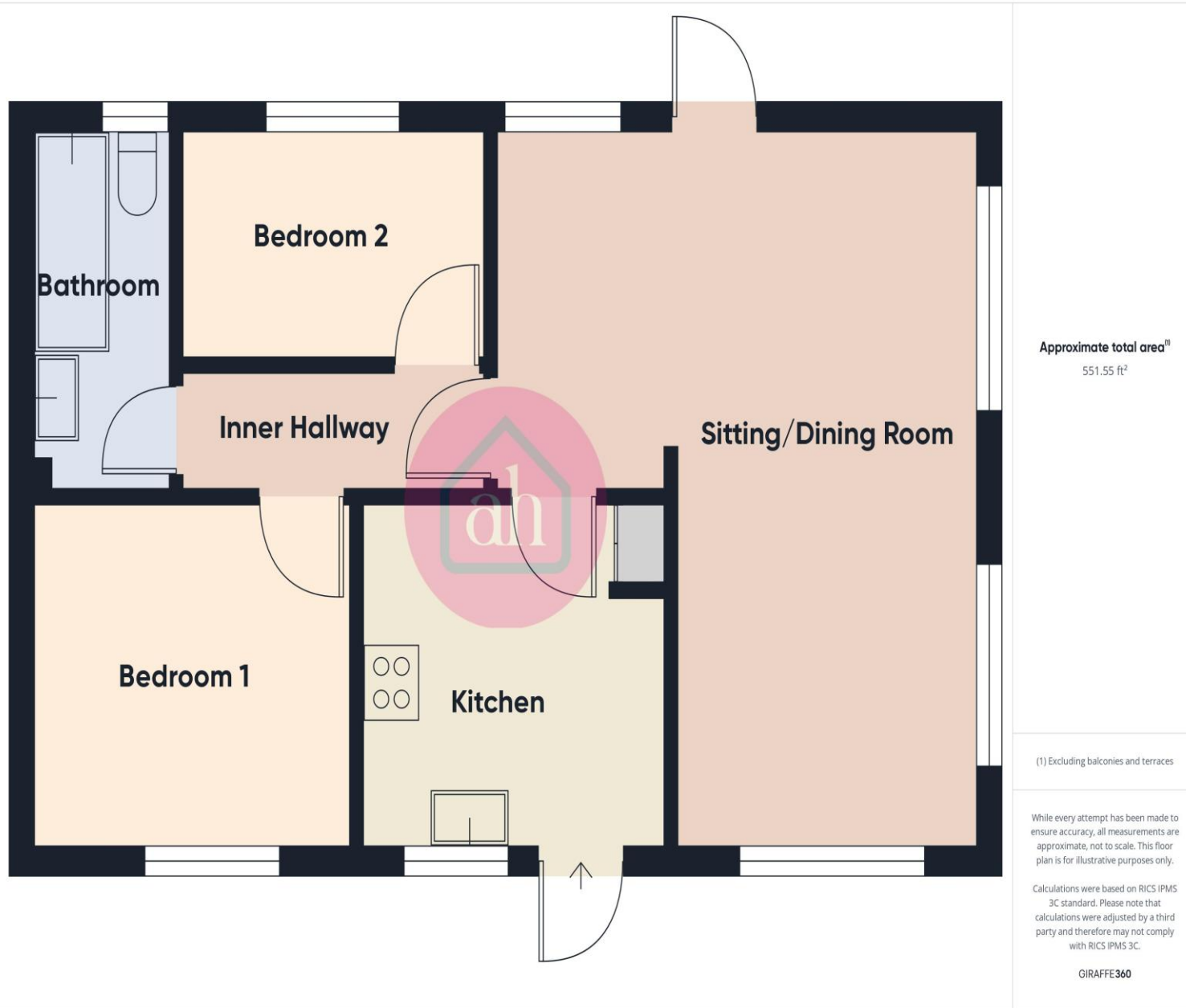
Agent's Note

The current pitch fee for this park home is £226.16 per month which includes the water. Sewerage is a separate payment to Anglian Water.

Pitch fees are reviewed annually.

The size of this park home is 30 x 20 ft and the age of the home is 2002.

This is a residential retirement site for the over 50's, you are allowed to have one dog or one cat on site.



Consumer Protection from Unfair Trading Regulations 2008 We have not tested any apparatus, equipment, fixtures, fittings or services and so cannot verify that they are in working order or fit for purpose. You are advised to obtain verification from your solicitor or surveyor. References to the tenure of a property are based on information supplied by the seller. We have not had sight of the title documents and a buyer is advised to obtain verification from their solicitor. Items shown in photographs are not included unless specifically mentioned within the sales particulars, but may be available by separate negotiation. We advise you to book an appointment to view before embarking on any journey to see a property, and check its availability.