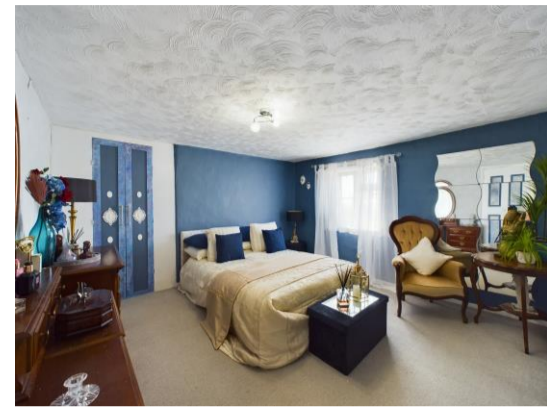


Consumer Protection from Unfair Trading Regulations 2008 We have not tested any apparatus, equipment, fixtures, fittings or services and so cannot verify that they are in working order or fit for purpose. You are advised to obtain verification from your solicitor or surveyor. References to the tenure of a property are based on information supplied by the seller. We have not had sight of the title documents and a buyer is advised to obtain verification from their solicitor. Items shown in photographs are not included unless specifically mentioned within the sales particulars, but may be available by separate negotiation. We advise you to book an appointment to view before embarking on any journey to see a property, and check its availability.



allhomes





This charming home, located in a semi-rural area, offers extensive accommodation. It features two spacious bedrooms and an expanded ground floor with a sitting room, garden room, and an additional reception room that can serve as a bedroom. The property also includes a modern kitchen and a complete bathroom suite, making it an ideal home. The private, enclosed garden wraps around the property, offering both lawn and patio areas. Additionally, there is convenient parking at the front of the cottage. Be sure to schedule a viewing to truly appreciate the space and amenities available.

Entrance Hall

4' 4" x 2' 11" (1.32m x 0.89m)
Front door, radiator.

Kitchen

10' 7" x 7' 9" (3.22m x 2.36m)
A modern style shaker kitchen fitted with matching wall and base cupboards and drawer units with a wood effect work top over. One half inset sink and drainer with mixer tap, space for washing machine, fridge freezer and free standing oven with extractor over. Understairs storage, window to front and stairs to first floor.

Sitting Room

15' 6" x 11' 10" (4.72m x 3.60m)
A spacious room with a feature brick fireplace and inset electric fire. Wood effect flooring. Archway leading to garden room.

Garden Room

9' 0" x 8' 9" (2.74m x 2.66m)
Double doors leading to the pretty pagoda patio seating area.

Dining Room/Study

14' 7" x 8' 8" (4.44m x 2.64m)
Generous size room that lends itself to a formal dining room, work space with window over looking the garden. Radiator

Bathroom

9' 2" x 6' 0" (2.79m x 1.83m)
4 piece suite comprising of WC, sink, bath with regent style mixer taps over and shower cubicle. Wall to floor tiles, window to side. Radiator.

Landing

3' 1" x 2' 9" (0.94m x 0.84m)
Window to front, radiator.

Bedroom 1

12' 2" x 11' 11" (3.71m x 3.63m)
Generous size double room with a built in fitted wardrobe. Window to rear, radiator.

Bedroom 2

10' 6" x 7' 9" (3.20m x 2.36m)
Double room with window to front aspect, radiator. Loft access.

Outside

Front

Gravel driveway with convenient parking at the front of the cottage

Rear Garden

A private, enclosed garden wraps around the property, offering both lawn and pretty patio area with pagoda.