

Situated within a highly desirable village, this stunning detached family residence boasts meticulous attention to detail and finished to a high specification throughout. Welcoming you with an inviting entrance hall and convenient cloakroom, it offers a spacious living room featuring an Inglenook style fireplace, alongside a separate dining room for elegant entertaining. The expansive kitchen/breakfast room is a chef's delight, complete with ample space for a Range cooker, while a utility room adds practicality. Upstairs, three generously proportioned bedrooms include a luxurious en-suite to the master, complemented by a stylish family bathroom. Outside, a generously sized rear garden affords delightful views of the surrounding fields, with ample off-road parking completing this exceptional property.

Entrance Hall

8' 9" x 4' 9" (2.66m x 1.45m)

A large welcoming entrance hall, stairs to first floor, under stairs storage cupboard, spot lights, tiled flooring

Sitting Room

16' 9" x 11' 0" (5.10m x 3.35m)

Inglenook style fireplace with inset wood burner, wooden flooring, radiator

Cloakroom

4' 11" x 3' 11" (1.50m x 1.19m)

With W.C, wash hand basin, extractor, spot light, tiled floor

Dining Room

14' 3" x 9' 4" (4.34m x 2.84m)

With French doors to rear, wooden flooring

Kitchen/Breakfast Room

16' 2" x 10' 6" (4.92m x 3.20m)

A spacious room, fitted with a range of matching wall and base level units with granite work surfaces over, inset butler sink with mixer tap over, space for Range cooker, integral dishwasher, space for American style Fridge/Freezer, tiled flooring opening to utility room

Utility Room

8' 7" x 5' 8" (2.61m x 1.73m)

Fitted with wall and base level units with work surfaces over, inset sink unit and drainer with mixer tap over, space and plumbing for washing machine, water softener

First Floor

Landing

15' 0" x 10' 0" (4.57m x 3.05m)

A spacious landing, Velux window to rear, loft access, airing cupboard, wooden flooring

Bedroom 1

16' 4" x 10' 5" (4.97m x 3.17m)

With large walk in wardrobe, wooden flooring, radiator

En-Suite

Fitted suite comprising shower cubicle, W.C, wash hand basin, heated towel rail, tiled walls and tiled floor

Bedroom 2

14' 1" x 10' 5" (4.29m x 3.17m)

With built in wardrobe, wooden floor, radiator

Bedroom 3

10' 5" x 9' 8" (3.17m x 2.94m)

With wooden flooring, radiator

Bathroom

7' 4" x 5' 11" (2.23m x 1.80m)

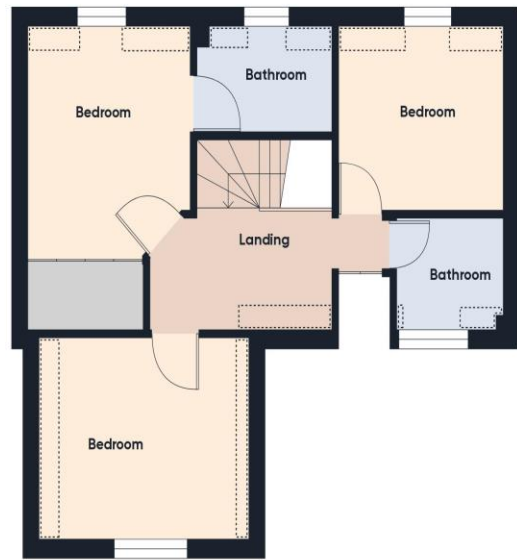
Fitted suite comprising paneled bath with Victorian style mixer tap, W.C, wash hand basin, heated towel rail, part tiled walls, tiled floor

Outside

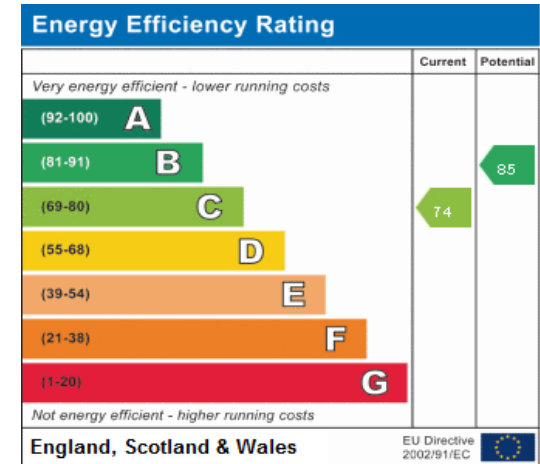
To the front there is a a driveway providing off road parking, there is a further driveway to the side. The garden to the rear is mainly laid to lawn, with patio area, gate providing access, it is enclosed by fencing and brick wall and enjoys views over the field.



Ground Floor



Floor 1



Consumer Protection from Unfair Trading Regulations 2008 We have not tested any apparatus, equipment, fixtures, fittings or services and so cannot verify that they are in working order or fit for purpose. You are advised to obtain verification from your solicitor or surveyor. References to the tenure of a property are based on information supplied by the seller. We have not had sight of the title documents and a buyer is advised to obtain verification from their solicitor. Items shown in photographs are not included unless specifically mentioned within the sales particulars, but may be available by separate negotiation. We advise you to book an appointment to view before embarking on any journey to see a property, and check its availability.