





Situated in a serene woodland park, this charming 2-bedroom park home offers a tranquil haven for those over 50. The master bedroom boasts an en-suite, while a second double bedroom and bathroom provide ample space. A utility room and study add practicality, while a south-east facing garden beckons for relaxation. A storage shed with power and light and a parking space complete this idyllic retreat, where nature meets comfort seamlessly.

Entrance Lobby/Utility Room

6' 11" x 3' 3" (2.11m x 0.99m)

Wall and base units with space for washing machine and fridge freezer. Archway leading into Kitchen.

Kitchen

11' 10" (max) x 9' 0" (max) (3.60m x 2.74m)

Well appointed kitchen with a range of wall and base cupboards with worktops and drawer units. Single oven with gas hob and extractor fan over. Window to side and radiator.

Sitting/Dining Room

19' 6" (max) x 19' 2" (max) (5.94m x 5.84m)

Windows to the side and front with french doors. Electric imitation log burner. Radiator

Study

6' 11" x 6' 0" (2.11m x 1.83m)

Fitted desk with drawers. Window to the side. Radiator.

Inner Hall

12' 11" x 2' 7" (3.93m x 0.79m)

Airing cupboard and loft hatch.

Bedroom 1

10' 11" x 9' 7" (3.32m x 2.92m)

Range of fitted wardrobe and drawer units with dressing table. Window to side and radiator.

En-suite

7' 0" (max) x 4' 11" (2.13m x 1.50m)

Shower, wash hand basin and WC. Window to rear and radiator.

Bedroom 2

9' 9" (max) x 9' 7" (2.97m x 2.92m)

Range of fitted wardrobes and dressing table. Window to side and radiator.

Bathroom

7' 6" x 6' 11" (2.28m x 2.11m)

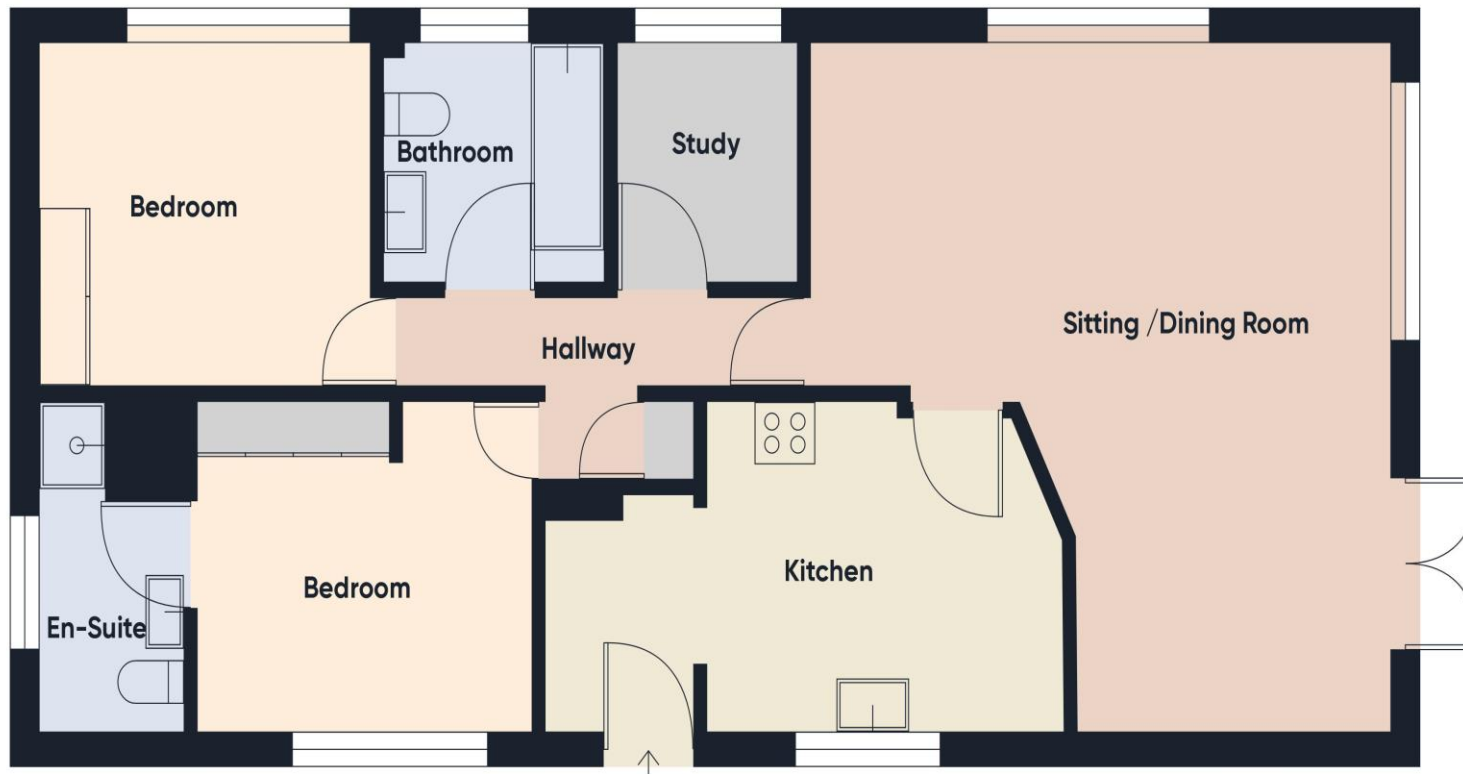
Bathroom suite comprising bath, wash hand basin and WC. Window to side and radiator.

Outside

Sunny south east facing garden, wrapping around park home with pleasant patio area and shrub borders. Storage shed with power and light.

Agents Note

The current pitch fee for this park home is £211.36 per month plus £8.30 for water. Sewerage is a separate payment to Anglian Water. Pitch fees are reviewed annually. This is a 2005 Homeseeker Berkley Mendip the size of this park home is 45 x 20 Ft and has the external insulation added. This is a residential retirement site for the over 50's, you are allowed to have one dog or one cat on site.



Consumer Protection from Unfair Trading Regulations 2008 We have not tested any apparatus, equipment, fixtures, fittings or services and so cannot verify that they are in working order or fit for purpose. You are advised to obtain verification from your solicitor or surveyor. References to the tenure of a property are based on information supplied by the seller. We have not had sight of the title documents and a buyer is advised to obtain verification from their solicitor. Items shown in photographs are not included unless specifically mentioned within the sales particulars, but may be available by separate negotiation. We advise you to book an appointment to view before embarking on any journey to see a property, and check its availability.