



43 Churchill Avenue

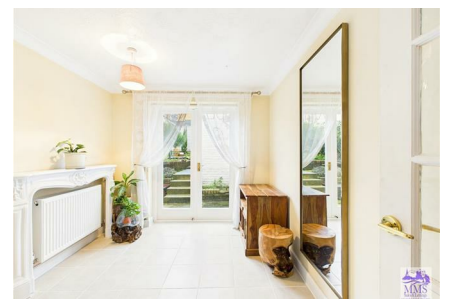
Chatham ME5 0DE

£315,000



****NO CHAIN**CORNER PLOT**CLOSE TO AMENITIES**TWO DOUBLE BEDROOMS**TWO RECEPTIONS****

Nestled on Churchill Avenue in Chatham, this charming end-terrace house presents a wonderful opportunity for both first-time buyers and investors alike. The property boasts a generous corner plot, offering additional land to the side, which previously had planning permission for a double-storey extension—which could be an exciting prospect for those looking to expand their living space. Upon entering, via the entrance area, you are welcomed in to two well-proportioned reception rooms, perfect for both relaxation and entertaining. The kitchen is conveniently located, providing a functional space for culinary pursuits. Upstairs, you will find two spacious double bedrooms, complemented by a family bathroom, ensuring ample accommodation for family or guests. The wrap-around garden enhances the appeal of this home, providing a delightful outdoor space that can be enjoyed throughout the year. Although parking is on-street and not allocated, there is plenty of availability in the vicinity, making it easy for residents and visitors alike. This property is offered with no forward chain, allowing for a smooth and efficient purchase process. It falls within council tax band B, making it an economical choice for potential homeowners. The location is particularly advantageous, with a variety of amenities close at hand, including schools, shops, and recreational grounds, catering to all your daily needs. In summary, this end-terrace house on Churchill Avenue is a fantastic opportunity to secure a comfortable home in a desirable area, with the potential for future development. Do not miss the chance to make this property your own.



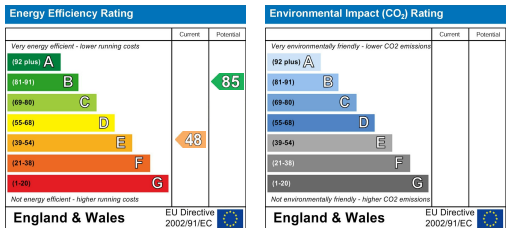
Area Map



Floor Plans



Energy Efficiency Graph



These particulars, whilst believed to be accurate are set out as a general outline only for guidance and do not constitute any part of an offer or contract. Intending purchasers should not rely on them as statements of representation of fact, but must satisfy themselves by inspection or otherwise as to their accuracy. No person in this firms employment has the authority to make or give any representation or warranty in respect of the property.