



## 8 Teal Drive

St. Marys Island ME4 3EA

**£390,000**



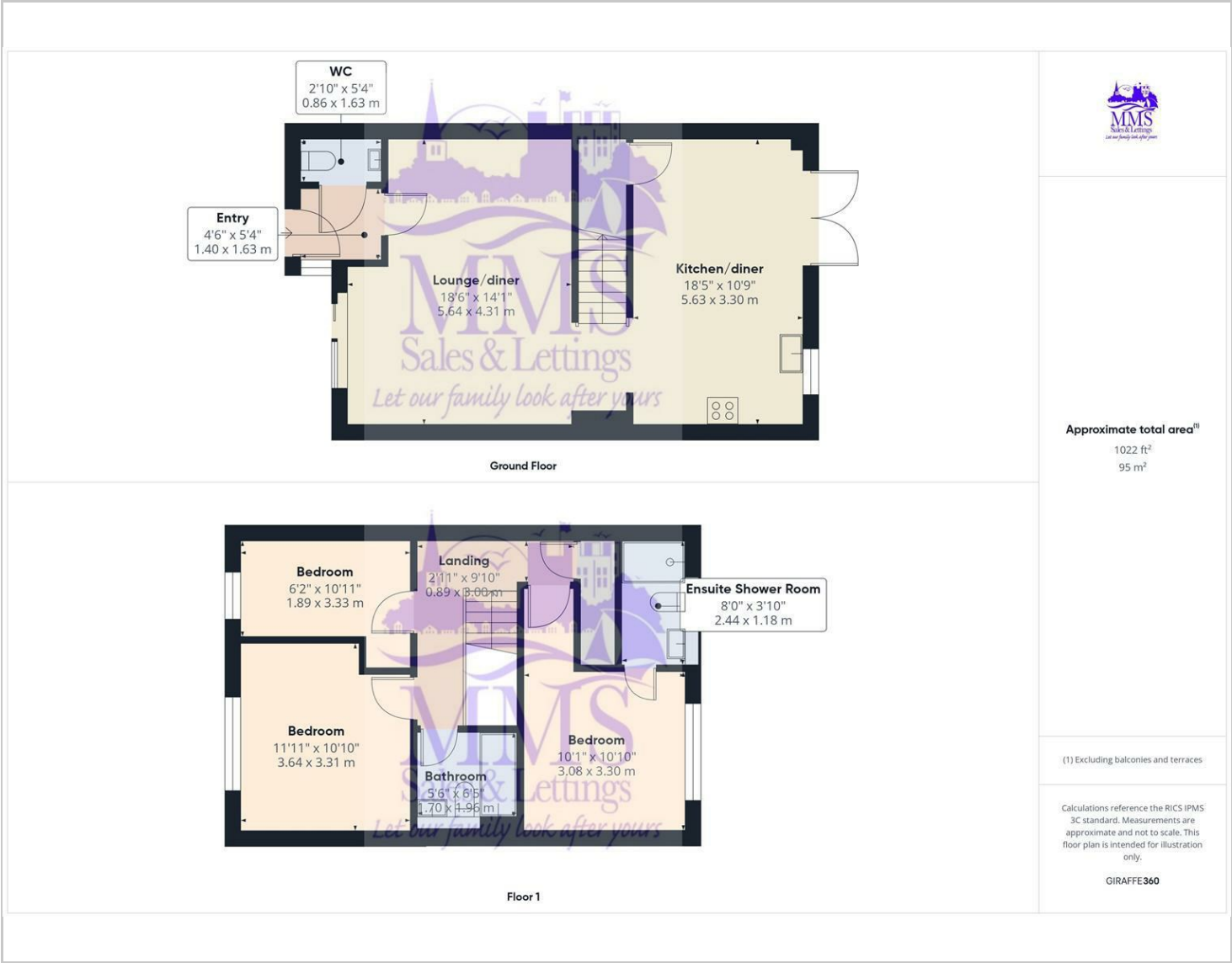
Nestled in the charming location of Teal Drive on St. Marys Island, this delightful three-bedroom house offers a perfect blend of modern living and community spirit. Built in 2010, the property spans an impressive 1,087 square feet, providing ample space for families or professionals seeking a comfortable home. Upon entering via the hallway you will find a convenient downstairs WC, then, you are welcomed into a spacious lounge and dining area, ideal for both relaxation and entertaining. The large kitchen breakfast room is a highlight, designed for culinary enthusiasts and family gatherings alike. The master bedroom features an en-suite shower room, ensuring privacy and convenience, while an additional family bathroom serves the other two well-appointed bedrooms. Outside, the property boasts a lovely garden, complete with a cabin that is currently utilised as an office, equipped with power and internet, making it perfect for remote work or creative pursuits. The garden space is a wonderful retreat for outdoor enjoyment. For those with vehicles, the property includes a carport with parking for two cars, and a modest annual service charge of £341.49 contributes to the upkeep of the community. The home falls under council tax band E and has an Energy Performance Certificate (EPC) rating of C, reflecting its energy efficiency. Families will appreciate the nearby children's play park, which also features basketball courts and fitness equipment, promoting an active lifestyle. St. Marys Island is also home to its own primary school and community centre, fostering a strong sense of community. Additionally, the picturesque river walks nearby offer a serene escape into nature. This property is not just a house; it is a wonderful opportunity to embrace a vibrant community and a comfortable lifestyle.



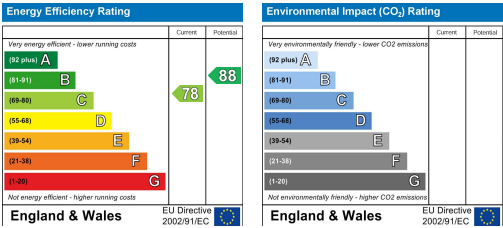
Area Map



Floor Plans



Energy Efficiency Graph



These particulars, whilst believed to be accurate are set out as a general outline only for guidance and do not constitute any part of an offer or contract. Intending purchasers should not rely on them as statements of representation of fact, but must satisfy themselves by inspection or otherwise as to their accuracy. No person in this firms employment has the authority to make or give any representation or warranty in respect of the property.