



## 29 Delce Road

Rochester ME1 2ET

**Offers Around £230,000**



2



1



1

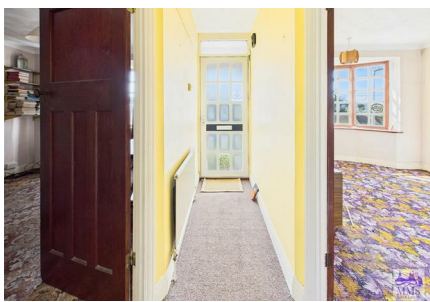


D

Positioned in the charming area of Delce Road, Rochester, this delightful semi-detached bungalow presents an excellent opportunity for those seeking a home with potential. Boasting two well-proportioned bedrooms and a comfortable reception room, this property is perfect for small families, couples, or individuals looking to downsize.

The bungalow is set in an elevated position, providing a sense of privacy and tranquillity. The large rear garden is a standout feature, offering ample space for outdoor activities, gardening, or simply enjoying the fresh air. Additionally, there is hardstanding parking available for two vehicles at the rear, ensuring convenience for residents and guests alike. While the property is in need of updating, it is chain-free, allowing for a smooth and straightforward purchase process. Located in a popular and historic area, this bungalow is surrounded by a rich tapestry of local culture and amenities, making it an ideal choice for those who appreciate the charm of Rochester.

This is a wonderful opportunity to create a home tailored to your tastes in a sought-after location. Whether you are looking to invest or find a new place to call home, this semi-detached bungalow on Delce Road is certainly worth considering.

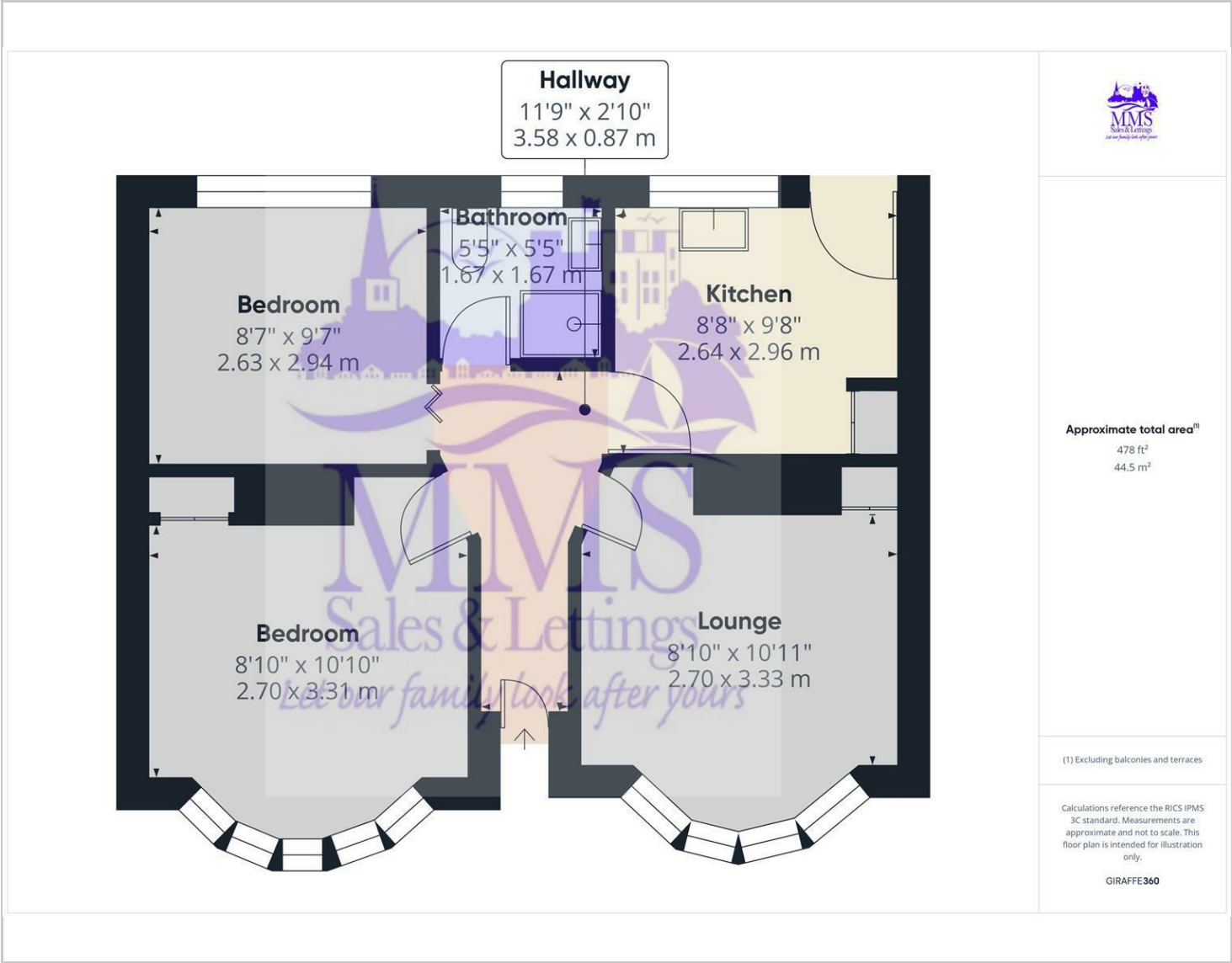




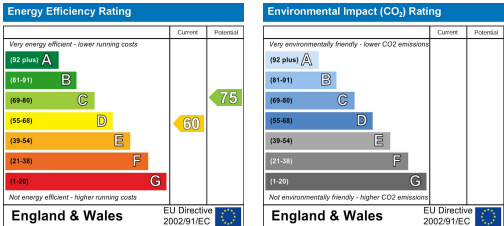
Area Map



Floor Plans



Energy Efficiency Graph



These particulars, whilst believed to be accurate are set out as a general outline only for guidance and do not constitute any part of an offer or contract. Intending purchasers should not rely on them as statements of representation of fact, but must satisfy themselves by inspection or otherwise as to their accuracy. No person in this firms employment has the authority to make or give any representation or warranty in respect of the property.